

NORTHWEST WOODTURNERS



Founded 1995

Pacific Northwest Oregon Chapter of The American Association of Woodturning

AAW | AMERICAN ASSOCIATION
OF WOODTURNERS

FEBRUARY 2020



Jeff Littman
First Bowl



Roger Crooks
Shallow Bowl in Crotch



Roger Crooks
Eight Spheres in a Bowl

NORTHWEST WOODTURNERS

PRESIDENT'S MESSAGE • ROGER CROOKS



After our January meeting, we had our first board meeting for 2020. It was standing room only with 12 people attending. We discussed a lot of ideas for the coming year. I brought up my main objective for 2020, which is to have a major focus on Community Service. This started a long discussion on what and how we could do this.

Many of our members already donate items for local fund-raising auctions. We did a fun project a few years ago for Tualatin Valley Fire Department. There has been a lot of support for our veterans organizations like Wounded Warrior and Tools for Troops. Given the

enthusiasm the board had for this, a number of people took action items to look at various options and local charities we might want to support.

Note that we will soon be announcing a joint project with the Guild of Oregon Woodworkers for Beads of Courage boxes. See also article from Dave Wood for Assistance League of Greater Portland for clothing for school kids.

ACTION ITEM FOR ALL MEMBERS – Keep your eyes open for opportunities where a woodturner could help, for charities we could support with donated turnings, and any other ideas you can think of. It would be great if we had a point person for this, so if interested, raise your hand and let me know. For now, send your ideas to me.

We finalized details for Stuart Batty's visit. This will be a number of firsts for us; a new shop location at Dave Wood's house and two full hands-on classes plus a demo day. The response was incredible, selling out the first class in less than 90 minutes and the second class in less than a day (and we still have eight people on the waiting list).

Another surprise was Stuart's wood list for the two classes – 96 blanks! We received a very generous donation of a Norway Maple tree from MILWAUKIE HARDWOODS, LLC, (5111 SE Lake Rd Milwaukie, Oregon 97222) who will mill it for us into 4" planks. Look them up if you need lumber at www.milwaukiehardwoods.com. It is a small, two-man company with great personal service.

We also agreed to have our March demonstrator, Janice Levi put on a demo day following our meeting. Stay tuned for further details.

We are now at 162 members and continue to grow. The board is committed to doing our best and to surpass your expectation of what NWWT can do for you.

—Roger

CLUB INFO

NORTHWEST WOODTURNERS
www.northwestwoodturners.com

*Meetings are held at 7pm on
the 1st Thursday of each month at:*

The Multnomah Arts Center
7688 SW Capitol Hwy
Portland, OR 97219
[\[map\]](#)

President
[Roger Crooks](#)

Vice President
[Kevin White](#)

Secretary
[Larry Klick](#)

Treasurer
[Mike Meredith](#)

Directors
Steve Newberry Sarah Livingston
Dave Wood Richard Hall
Barb Hall Jim Schoeffel

STAFF VOLUNTEERS

Raffle Coordinator
Jackie Yi

Librarians
Lynne Hemmert Alex McDowell

Photographer
Jim Schoeffel

Webmaster
Roger Crooks

Storekeeper
John Sutter

Newsletter Editor
[Bill Karow](#)
(503) 490-0325

VP'S "TURN ON THINGS" • KEVIN WHITE



Those of you signed up for the Stuart Batty demo or hands-on classes are in for a great experience. For those who are not able to attend, remember that Stuart will be doing a demo you don't want to miss at the regular Thursday meeting, February 5.

Janet Levi is on board for March. She is a woodturner and pyrographer. She will be doing a short demo at the Thursday, March 5, meeting, and we are planning all-day classes on Friday, March 6, and Saturday, March 7, in either demonstration or hands-on, depending on interest. **We will be sending out a survey soon to determine interest between hands-on and demo.**

The following are Janet's descriptions for the hands-on and demo classes.

HANDS-ON CLASS: ADVANCED PYROGRAPHY (6 hour hands-on class)

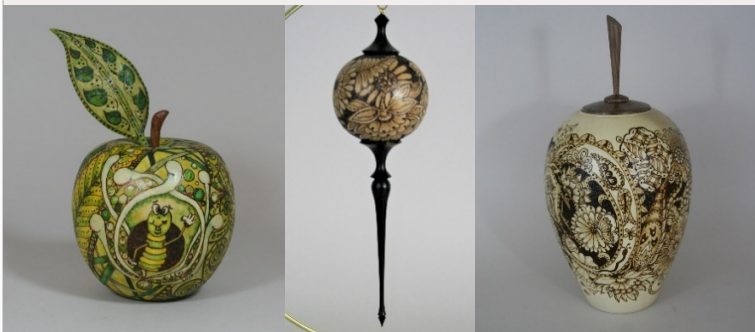
This class requires the use of an adjustable temperature woodburner. We will explore the effects of various temperature settings using several different tips. All students will complete a series of practice woodburnings plus a final one that demonstrates their ability to vary temperature, pressure and speed of the burning tips.



- Woodburning techniques
- Temperature control and its importance
- Selecting/creating patterns
- Techniques for applying patterns to flat and round surfaces
- Cleanup after burning
- Safety tips for health and wood
- Creating several practice pieces
- Creating a final woodburned piece

FULL DAY DEMO: PYROGRAPHY DEMYSTIFIED (6 hour demonstration)

This demonstration will include the opportunity for observers to try the woodburning techniques. I will bring an additional woodburner and attendees are invited to try the techniques I'm demonstrating. In addition, there will be several pencil/paper activities for the attendees to "practice" some of the woodburning techniques. Those attending can expect to see:



- Advanced pyrography techniques
- Temperature control
- Speed control
- Pressure control
- Places where pyrography patterns can be found
- Techniques borrowed from the art world for enhancing pyrography
- Highlight and shadow
- Paper/pencil practice of various art and pyrography techniques

- Opportunity to try the technique on the extra woodburner (If there are one or two more woodburners that we could borrow on that day, it would be okay with me to set them up and let audience members come up and try the techniques.)

Some invitations are out for Thursday meeting demos for the rest of the year. Tom Willing and Jimmie Allen (Boxmaster Tools) have agreed to be on the calendar if their dates are available. The calendar for the rest of the year's demonstrations should be more complete for the March Newsletter.

—Kevin

NWWT'S COMMUNITY SERVICE

As mentioned in the President's Article, I'd like for us to focus on what NWWT can do for the community. There are a lot of ways, we as a club with unique talents, can make a difference and from what I have learned in working with several local clubs is that woodworkers are, by their nature, a very generous and hardworking group of people.

What can you do?

First, I've added a few questions on the website under your "profile" for you to indicate your interest in community service. When you login, click on "view profile" and look at the questions. This will let us target emails to those who are interested. There was a detailed article in January's newsletter.

I see three general categories where everyone can help:

1. Donations

- When you donate a turned item, let us know and we will start to accumulate all the donations so at year end we can measure our contributions
- Keep your eyes open for charitable opportunities and let us know. We can ask for help from the membership for donations.
- We may want to consider selecting a few charities that we focus on whether it is veterans, homeless, art groups, children – there is no end to needy organizations.

2. Projects

If you come across a rather large undertaking in which multiple people can participate, we can recruit a team to work on them. The Tualatin Valley Fire Department project was a great example where we had about 10 people work on it and included a Saturday class on spindle turning for the participants.

John Sutter (our store manager) is leading a Beads of Courage box project that we will announce next month.

We need for everyone to keep your eyes open for ideas in this area.

3. Good Guy Projects

Often, we hear about a turning job that one person can do at home. For myself, I've done things from dresser drawer knobs to martial arts weapons and I know many of you do the same for friends and neighbors. Again, let us know and we will keep track of what our members are doing.

Be a Leader – *It would be great to have a leader to drive these types of opportunities. If you are passionate about giving back to the community – this would be a great way to do so. Let me know if you are interested.*

Bottom Line – Let us know what you are doing, ideas you have and opportunities that come up. Make sure you check out the article from Dave Wood for Assistance League of Greater Portland support.

—Roger

AAW NEWS

NWWT Members:

NWWT members can receive a free 3-month AAW membership. Watch this [AAW Video](#) for benefits and click [here](#) to join.



AAW 2020 Symposium Chapter Group Discount:

If we have 10 people interested in attending this year's Symposium in Louisville, we can get a \$25 discount per person.

Click on the link for more info on the [2020 AAW Symposium in Louisville](#). If you are thinking of going, please drop me a quick email.

—Roger

COMMUNITY SERVICE OPPORTUNITY

My wife belongs to the Assistance League of Greater Portland, a local chapter of the national Assistance League. The organization's primary focus area is assisting students of all ages (pre-K thru 12) in need of new school clothing. They are 100% staffed by volunteers and all funds raised benefit children in greater Portland. Each year they hold an auction to raise funds toward this purpose, which this year is on April 27th.

The Assistance League auction would love to have turned wood items to sell, such as:

- 2 or 3 food-ready salad bowls (12" or a bit larger)
- 2 or 3 larger "art" bowls for "themed gift baskets" at silent auction
- Vases, vessels of all sizes and shapes, salt and pepper grinders, boxes, etc.
- Christmas ornaments/decorations (sets or individuals)

Each piece would need a brief bio on the artist, type of wood, and item description. Also a note "Donated by the NW Woodturners local chapter" should be included with each piece.

Items would need to be ready by March 31st. All items are tax-deductible donations, and receipts will be provided by the Assistance League.

For more information and questions, contact Judy Wood at 503-481-9323, or judywood@mac.com

—Dave Wood

AL
assistance league®
Transforming Lives • Strengthening Community
GREATER PORTLAND

Because of You!

Your Support Can Bring Positive Changes To Those In Need!

Dear Supporters,

You can make a difference in the lives of children and adults within your community by supporting Assistance League of Greater Portland, a 501(c)(3) nonprofit organization. Please consider sponsoring our major fundraiser, Promenade Portland, a fashion show and luncheon to be held on April 27, 2020 at the Multnomah Athletic Club.

The funds raised will help us continue our vital programs:

- Operation School Bell® - provides new clothing to school children
- Cordero House, a Janus Youth program - provides support to teens on the path to recovery
- Life Story Books - provides books to children living in foster care to keep their memories, photographs, and school records
- Assault Survivor Kits® - provides toiletries and personal items to victims of assault to help restore their dignity
- Scholarship - provides an education to a trade school program

Ways you can help:

- ☐ Become an event sponsor (See sponsor form)
- ☐ Make a cash donation
- ☐ Donate goods or services for auction packages

NEW CLUB LATHE



The club's new Nova lathe is assembled, trued up and ready to go!

The new Nova Galaxi DVR lathe has some amazing features. Rather than list them all here, I recommend going to these two websites to check it out.

www.teknatool.com/product/nova-galaxi-dvr-lathe/

www.youtube.com/watch?v=mLuwcKNbtq8&t=402s



I installed a wheel kit that seems to work much better than the one on our old lathe. I might do a mod in the future, if needed. I also built a box under the lathe which allows us to keep all the accessories together and prevent them from walking off. I'm working on a "cheat sheet" to make operation easier.

—John Beechwood

RECENT AAW POLL

You recently received an email with a quick poll about AAW. These polls are anonymous. The reason for this poll was AAW asked for an estimate of AAW membership in our club, and they are offering a **\$25 discount if we have 10 signups for the AAW Symposium.**

These polls are quick and we will be using them to help us understand your opinions on future actions we may take. When you see one, please take two minutes or less to vote.

Current Poll Results

Current AAW Membership: **31 YES — 12 NO**

Considering attending this year's AAW Symposium: **6 YES — 37 NO**

AAW | AMERICAN ASSOCIATION
OF WOODTURNERS

FEBRUARY DEMONSTRATOR • STUART BATTY



We are extremely fortunate to have Stuart Batty here for our regular Thursday night meeting. Stuart is a legend in the turning world for his attention to detail in how turning tools work and how they should be sharpened. During his demonstration, he will give a preview of what will be taught in depth at his All-Day Demo and his Hands-On Classes. If you only make it to a few meetings each year, don't miss this one!

For a preview of what Stuart is all about, including the push cut technique using his "40/40" grind, you can view any of his 35 free videos (www.vimeo.com/woodturning).

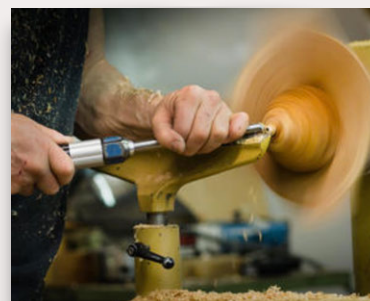
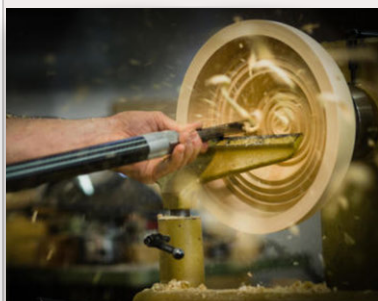
You can also download his paper titled "*The Perfect Cut*" [here](#).

Thursday 2/6/19, 6:30 – 9pm
NWWT Monthly Meeting • Stuart Batty
 @ Multnomah Arts Center [\[map\]](#)

Friday 2/7/19, 9am – 4pm
Hands-On Turning Class with Stuart Batty
 @ Dave Wood's shop [\[map\]](#) (lunch provided)
SOLD OUT

Saturday 2/8/19, 9am – 4pm
All Day Demonstration by Stuart Batty
 @ Dave Wood's shop [\[map\]](#) (lunch provided)
4 SPACES AVAILABLE

Sunday 2/9/19, 9am – 4pm
Hands-On Turning Class with Stuart Batty
 @ Dave Wood's shop [\[map\]](#) (lunch provided)
SOLD OUT



FEBRUARY CHALLENGE • "NEW TOOL" TURNINGS

The Monthly Challenge for February is "New Tool" Turnings.

Show us what you've made this month with that new tool you picked up from the Tool Sale & Swap at our meeting last month.

Remember: Winning pieces appear on the front cover of the March newsletter!

—bk

MARCH DEMONSTRATOR • JANICE LEVI

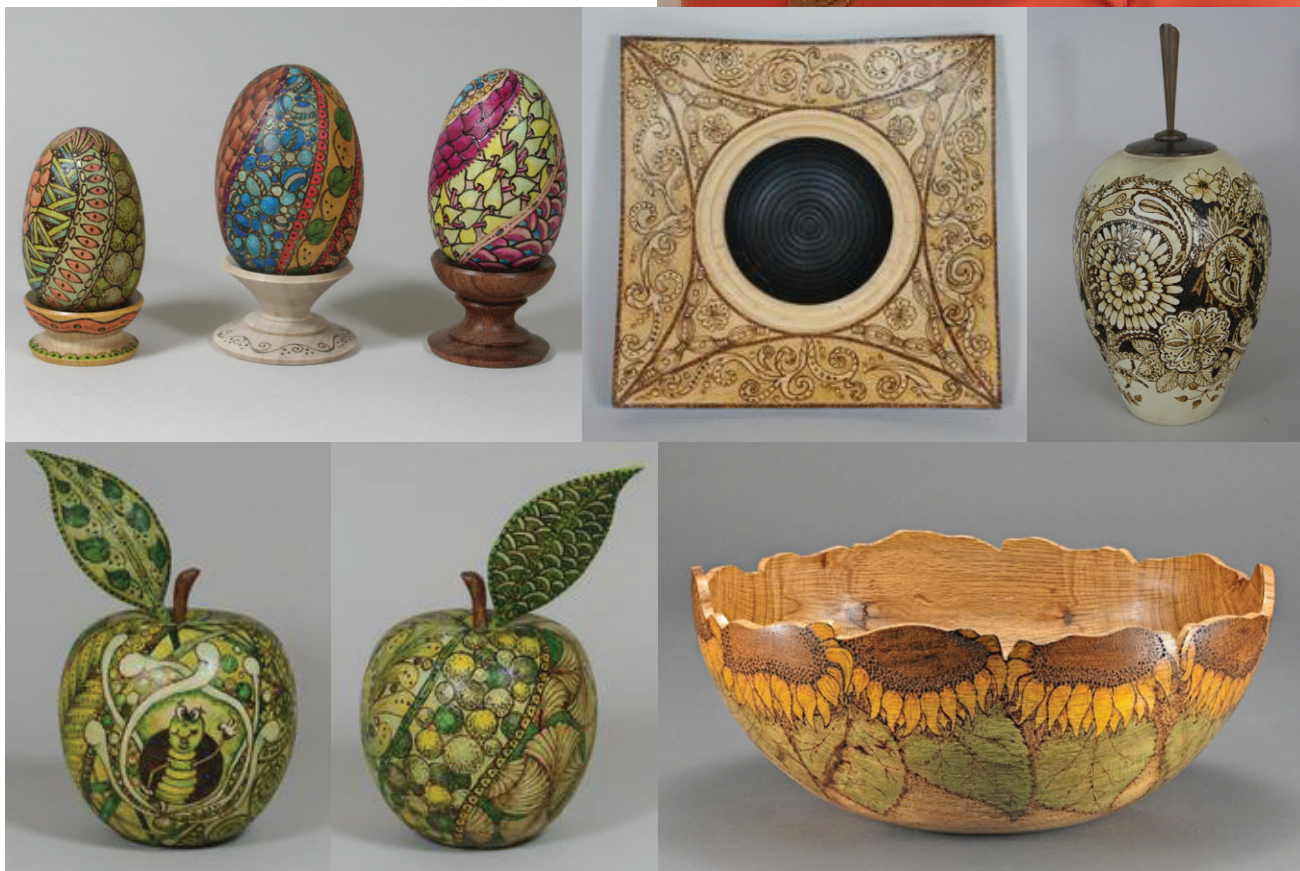


**March
Demonstrator
JANICE LEVI**

**Monthly Meeting:
Thursday, March 5th @ 6:30pm**

**All Day Turning Class & All Day Demo:
TBA**

**Location:
Multnomah Arts Center
[\[map\]](#)**



JANUARY CHALLENGE • SPHERES

• Photography by Jim Schoeffel •

The Monthly Challenge for January was ~~New-Tool Turnings~~ Spheres.

So...I guess I messed up by changing the January Challenge from "New-Tool Turnings" to "Spheres." My thought was that since the Tool Swap was happening in January, it made more sense to have the "New-Tool Turnings" Challenge after the Tool Swap. Apologies for the confusion. Bring your New-Tool Turnings to our next meeting. 'Cos that's the Monthly Challenge for February.

—bk



Roger Crooks

*Eight Spheres in Bowl
Assorted woods; buffed finishes.
Spheres: 2-1/4" dia. to 3" dia.
Bowl: 11" dia. x 2-1/4" high*



Bill Karow

*Two Spheres
Bleached Walnut 3" dia.
Ash 3-1/2" dia.*

JANUARY SHOW-N-TELL

• Photography by Jim Schoeffel •

Roger Crooks

Shallow Bowl in Crotch

Lilac Crotch; no finish

Bowl: 5" dia. x 3/4" deep

Crotch: 8-1/2" x 11" x 2" thick

WINNER!



JANUARY SHOW-N-TELL

• Photography by Jim Schoeffel •

WINNER!

NWWT Presidential Recognition Winner

Jeff Littman

First Bowl

Sweet Gum; Walnut oil finish

10-1/4" dia. x 4" high



Bob Poetzsch

*Bowl with Turquoise and Brass Inlays
White Oak, crushed Turquoise and Brass key filings
6-3/8" dia. x 3-3/4" high*



Jason LaRue

Coffee Snowman

Maple, Padauk, Walnut, Ebony

3-1/2" dia. x 7" tall (incl. hat)

Hat: 3-1/4" dia. x 1-3/4" high

Base: 4-1/2" dia.

JANUARY SHOW-N-TELL

• Photography by Jim Schoeffel •



Mike Worthington
Platter
Maple
Walnut oil finish
13" dia. x 2" high

Mike Worthington
Platter
Black Walnut
Walnut oil finish
13-3/4" dia. x 1-1/4" high



Mike Worthington
Platter
Maple
Walnut oil finish
12-1/2" dia. x 1-1/2" high



JANUARY SHOW-N-TELL

• Photography by Jim Schoeffel •



Phil Lapp
"Fallen Beauty" Pierced form
Birch & Leaves
3-1/2" dia. x 6-1/2" high



Roger Crooks
Bowl with Natural Edge
Maple Burl; Walnut oil & Shellac finish
Bowl: 7" dia. x 1-1/2" deep
Rim: 11" dia. x 2-1/2" thick

JANUARY SHOW-N-TELL

• Photography by Jim Schoeffel •

Bill Karow

Tray & Dish (one piece)

Home Depot Lumber

Tray: 9" x 11"

Bowl: 4-1/2" dia. x 1-1/4" deep



Bill Karow

Tray & Dish (one piece)

Cherry Crotch

Tray: 7-1/2" x 9"

Bowl: 3-5/8" dia. x 1" deep



Bill Karow

Natural Edge Bowl

Plum

9-3/4" x 10-1/2" x 5-3/4" deep

"SHOW US YOUR SHOP"

I thought it would be fun and helpful to take a look inside the woodturning spaces of some of our fellow club members. We'll try to show a different woodturner's shop every month. Hopefully, you will find things that could help you in your shop, too!

I asked Mike Porter to be the first to show off his shop, and he did not disappoint. Thanks, Mike!

—bk

MIKE PORTER'S SHOP TOUR



The History

When my workshop building was built with the house 19 years ago, I was not a woodturner but a sometimes woodworker, so had in mind I'd buy a Shopsmith for projects. With younger grandchildren and more on the way, I planned on using the space for an N-Scale model railroad layout. I had also been advised that with retirement on the close horizon I'd need a place to putter in so that I would not drive my wife crazy! After moving in, I built and operated my N scale layout for about 10 years to my grandchildren's delight, then as they grew up I sold all that and looked around for something else to add. Hey, there's a woodworking show out at the Expo. I'll go to that for ideas. NWWT had a booth there. I met Mike Meredith, Roger Crooks and watched Miguel

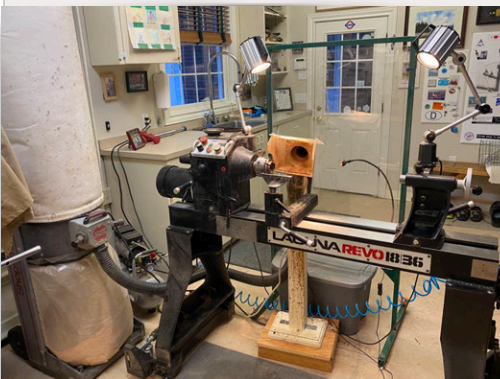
Hernandez turn a finial. Hey, I could learn to do that, I thought, so I took Jerry Harris' introductory woodturning class at the MAC and began using my Shopsmith.

After a year or so, I realized I needed to rearrange and modify my shop and make decisions on upgrading my equipment. The Club meeting demos and our experienced members really helped me get educated and thus make decisions about what to buy. Several members visited my shop and gave me suggestions, then it was time to shopping. I bought a Laguna Revo 1836, a Laguna bandsaw and continued a gradual investment in tools and other equipment, slowly adding as I got to know what I needed and could budget for. I frequented garage and estate sales and our annual January meeting for good deals. Today, I'm pretty well settled with what I have for most of what I do. If I take on bigger more complicated projects my needs could change.



The Shop – main woodturning area

My overall shop building next to the house is 20' x 20' or the size of a two car garage. The space solely allotted for woodturning is about half that, maximum. The other part is reserved for watercolor painting which I have been doing for years. There is an 8' garage door that opens up on nice days which I love doing and have the dust just blow through.



My Laguna Revo 1836 Lathe, 230 volts, 2hp: it has two halogen lights and casters. I had to extend an existing 230v outlet to the right location to keep the power cord off the floor. Next to the lathe is my California Tools air compressor, and Shopsmith dust collector with a 1 micron rated bag. Just to the left of the lathe is my Laguna bandsaw, another great purchase. Note in the photo the safety shield of heavy duty plexiglass. When my wife comes in to talk to me, she is protected while she stands there to gain my attention or just to watch the craftsman at work.

MIKE PORTER'S SHOP TOUR (CONT.)

To the immediate right of the lathe is a workbench where I lay my tools and gizmos I'm using on a project. Tip: I bought the frequently advertised Harbor Freight workbench and reinforced the back with a sheet of 3/16 plywood to stiffen it up. It works fine and I didn't have to buy an expensive bench just to lay tools on. I store loose equipment underneath and hang clamps onto the backside.

I did have to remodel the workshop's original cabinets to provide the long workbench you see in the photo with the pegboard and tools all lined up on the rack. Above are wood shelves that hold project wood in the queue. A bookshelf to the left above the desk area houses my DVDs, reference materials, and equipment manuals. In the shop closet I have one section of my cabinets also full of spindle pieces and small bowl blanks.



Under the workbench are larger cabinets for small equipment like a bench-top belt sander, homemade jigs for cutting small logs and bowl blanks, and equipment for my Shopsmith such as the jointer, saw fence, etc.

Under the cabinets you can see pull out plastic bins of spindle pieces sorted by size and type and also a bin of wood pieces I use for jam chucks and waste blocks.

Shop Equipment and Layout

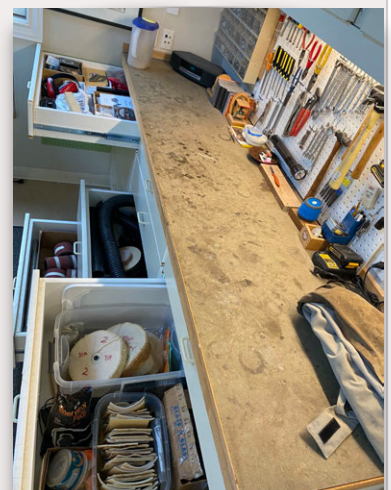
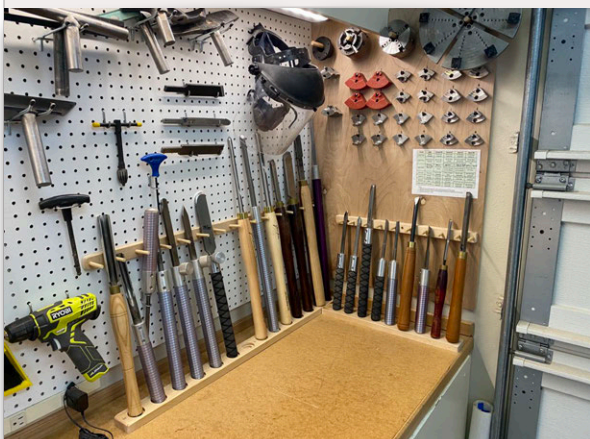
Off to the other side of the shop sits my Shopsmith. It comes in handy when I need a table saw, drill press, small bandsaw, or disc sander. It also drives my Beall buffing system. There is storage for sandpaper, finishes, glue and other good stuff we need from time to time below in drawers or in the overhead cabinets.

Lathe tools, chucks and other smaller equipment pieces:

Take a look again at my work bench and the lathe tool lineup. I did a lot of research on the method of storing my gouges and other lathe tools by looking at YouTube videos. I liked what Mike Walcott has in his shop, but I also used ideas from The Wyoming Woodturner, Mike Peace and others. With a sharp eye, you can discern by appearances that the majority of my tools are made by D-Way – a personal preference for quality, price and the interchangeable handle system. I recently treated myself to two Glenn Lucas gouges. I also copied Mike Walcott's way he wall-mounts his chucks and chuck jaws. I'm so far happy with all of this you can see in the photo. I find that the old 80-20 rule applies to woodturning. We use 20% of our tools 80% of the time. Every January I bring tools to the Club Swap Meet...tools that I thought I had to have but rarely use.

Equipment Layout: One of the three critical pieces of equipment that every turner must have is a low speed grinder with sharpening jigs. I first toyed with a separate

floor-stand for my grinder, as I knew it needed to be moveable, however I was undecided on the best overall shop equipment layout. So I came up with the idea of a portable grinder mounting that could be moved around to any of my workbenches. I designed and constructed a moveable wooden base that can be set onto any workbench as long as power is close by. I hung a coiling extension cord from the ceiling and use that grinder location seen in the photo 95% of the time. I did experiment with different shop layout configurations. The equipment arrangement you see in the photos is the equipment placement I've settled on. After upgrading two years ago from the



MIKE PORTER'S SHOP TOUR (CONT.)



original oxide grinder wheels, I now have twin CBN wheels, a 180 grit and a 360 grit. They're safe, durable, and will last so long that they'll be in my estate sale someday! I also recently started using my Veritas scraper burnisher regularly, but that's another story. The burnisher is mounted on a T-shaped wooden base that clamps into the workbench vise. I have a RoboRest and a OneWay Wolverine sharpening jig. I'm OK with these choices, but I'm waiting for the magical 50% off Tormek sale to appear other than in my dreams.

Dust Control

Visitors often ask, "How do you deal with the dust?"

This shop is so clean." I directly capture the dust as close as possible to the work piece with a small hood connected to the dust collector. I clean up after every work session unless I'm coming back to it in the morning. By the way, the dirtiest time for the air you breathe is usually when you are sweeping up your shop, so wear your face mask! I wear mine while turning AND cleaning up. My career experience as a mechanical engineer designing and building HVAC systems and later semi-conductor clean rooms for Intel taught me a lot about controlling air particles and the health risks of wood dust...and metallic grinder dust, by the way. Overhead is mounted a JET all room dust filter fan box which helps the overall room cleanliness, especially when I'm turning dry wood.



Long Term Wood Storage

Where do I store my green wood to dry out or that is waiting for further cutting and shaping? When a tree comes down, we acquire log sections or half rounds that need to be sealed and wait to be cut into smaller shapes. The sloping lay of the land of our lot gave me a full daylight basement under my shop! It has turned out to be a blessing and a curse. I have the room I need and I can store way too much! I can easily store enough wood to supply 3 or 4 of our annual August Picnic auctions! It is an unheated basement, but it maintains a reasonably stable temperature and humidity year round. I have a table down there for coating green wood with AnchorSeal. My chain saw sits close by.

In summary, let me say that's the tour and I also offer an invitation to any of you to call me up and arrange to come out for a visit. I'm happy to spend time with you, show you around and talk wood turning.

—Mike Porter

NWWT STORE • JOHN SUTTER



New Items: We now carry **Klingspor 9"x11" sheet sandpaper** in 80, 100, 180, 220 and 320 grit. It is a premium aluminum oxide grit, resin-bonded to a sturdy B/C- weight paper and has a zinc stearate coating which helps prevent the paper from loading up. Price is two sheets for a dollar.

We also have **Klingspor 2" and 3" sanding discs** and the **Mirka Goldflex foam back abrasive pads**. The Mirka pads can be used wet or dry and work great on flat work.

Also remember, as a NWWT member, you get a 10% discount on many Klingspor items. To see your discount, you must log into the website, woodworkingshop.com.

2" & 3" H&L Disc Bone Shaped Hand Pads are a handy accessory for anyone who uses sanding discs.

It is great for hand sanding and works for any hook & loop paper including Abranet when cut into small strips or squares. \$10 each.

Also, **Michael Hosaluk's Carbide Burnishers** (\$10) are in stock. Great for forming a continuous, sharp-edged, wire "hook" on all your scrapers.

—John

NWWT LIBRARY • LYNNE HEMMERT



The NWWT Library is missing A LOT of DVDs!

We will have a big turnout at the next meeting, and that would be a great time for you to return our DVDs to the Library. Look around the house and bring those books and DVDs to the meeting. See you all soon!

—Lynne

AAW'S 34TH ANNUAL INTERNATIONAL SYMPOSIUM



Step up to the plate! Accept the challenge to up your game!

The AAW Symposium will bring together more than more than 1,300 turners from around the globe to learn, share, and celebrate the art and craft of woodturning, making it the largest woodturning event in the world. No other event offers as many opportunities to learn from the world's best.

June 4-7, 2020

Kentucky Exposition Center
937 Phillips Lane
Louisville, KY 40209

[Register now!](#)

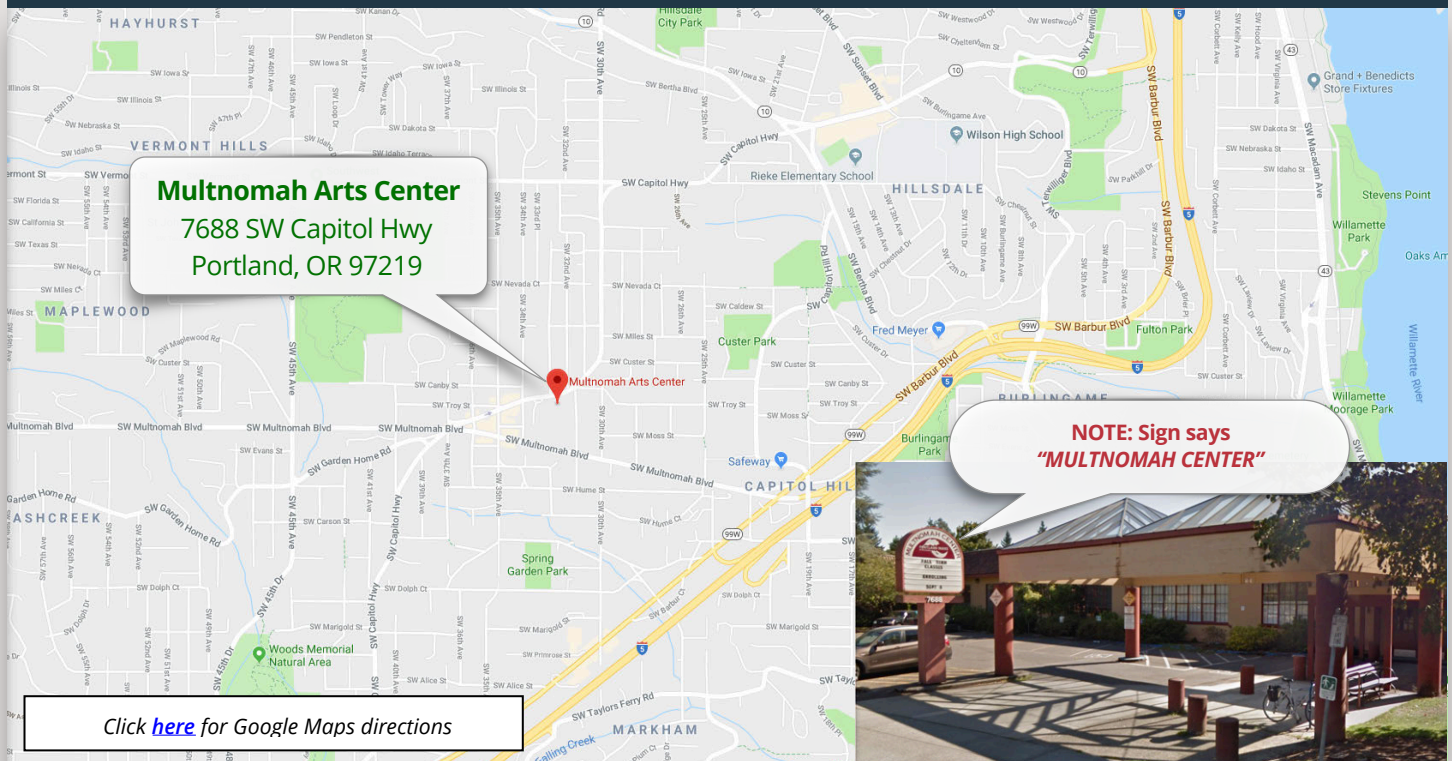
2020 NWWT MEETING SCHEDULE & PROGRAMS

NORTHWEST WOODTURNERS

1st Thursday of each month at 7pm in the Main Auditorium
The Multnomah Arts Center, 7688 SW Capitol Hwy, Portland, OR 97219

DATE	PROGRAM	CHALLENGE
Thursday, January 2	Annual Tool Sale and Swap Meet	Turn a Sphere
Thursday, February 6	Stuart Batty	"New Tool" Turnings
Thursday, March 5	Janice Levi	Push Cut Bowls
Thursday, April 2	TBD	Pyrography
Thursday, May 7	TBD	TBD
Thursday, June 4	TBD	TBD
Thursday, July 2	No Meeting	None
Saturday, August 8	Picnic + Auction!	None
Thursday, September 3	TBD	TBD
Thursday, October 1	TBD	TBD
Thursday, November 5	TBD	TBD
Thursday, December 3	No Meeting	Happy Holidays!

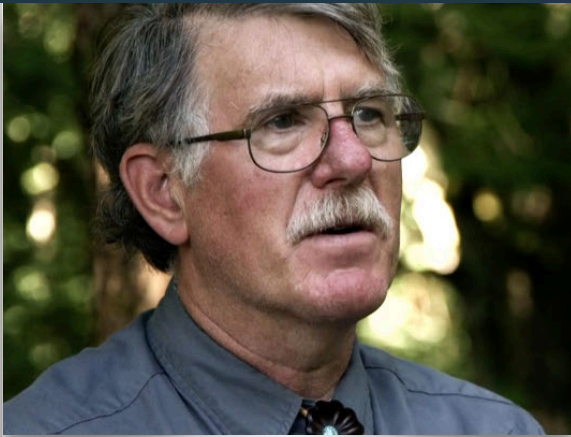
MAP TO THE MULTNOMAH ARTS CENTER



Click [here](#) for Google Maps directions

OTHER WOODTURNING CLUBS • MEETINGS & PROGRAMS

One meeting every month not enough?*Check out what other clubs around our area are doing!**(Please click on the clubs' website links to verify the information presented below.)***WOODTURNERS OF OLYMPIA**woodturnersofolympia.org**2nd TUESDAY of every month @ 6:30pm**First Baptist Church of Olympia
904 Washington St. SE, Olympia, WA 98507 [\[map\]](#)**February 11, 2020:** *Turn and Learn!***CASCADE WOODTURNERS**cascadewoodturners.com**3rd THURSDAY of every month @ 6:45pm**Pacific NW Carpenters Institute
4222 NE 158th Ave, Portland, OR 97230 [\[map\]](#)**February 20, 2020:** **Eric Lofstrom***Elegant Bowls and Tool Control***PACIFIC NORTHWEST WOODTURNING GUILD**woodturningguild.com**2nd WEDNESDAY of every month @ 7:00pm**MWA Architects
70 NW Couch St. Portland, OR [\[map\]](#)**February 12, 2020:** *No meeting this month.***SW WASHINGTON WOODTURNERS**southwestwashingtonwoodturners.com**4th WEDNESDAY of every month @ 7:00pm**Friends of the Carpenter's Center
1600 W 20th St, Vancouver, WA 98660 [\[map\]](#)**February 26, 2020:** *Visit website for more details.***WILLAMETTE VALLEY WOODTURNERS**willamettevalleywoodturners.com**2nd THURSDAY of every month @ 6:30pm**Center 50+ Senior Center
2615 Portland Rd, NE Salem, OR 97303 [\[map\]](#)**February 13, 2020:** **Tom Willing***To Be Announced***BEAVER STATE WOODTURNERS**beaverstatewoodturners.com**4th THURSDAY of every month @ 6:00pm**Coburg Community Charter School
91274 N Coburg Rd, Coburg, OR 97408 [\[map\]](#)**February 27, 2020:** *Visit website for more details.*

DALE LARSON • FEBRUARY 29TH OPEN SHOP

For about the last 10 years, Howard Borer and I have hosted Open Shop Saturday in my shop in Gresham. The idea behind Open Shop is to help new turners with projects and ideas. We have a good group of experienced turners who help new turners mount the wood on the lathe and learn how to sharpen and present their tools to the wood. I like to say: *We have no standards, everyone is welcome.*

—Dale

When: Generally the last Saturday of the month from 9am to noon.

Where: Dale's shop at [5010 SE Regner Rd, Gresham.](#)
(503) 661-7793

Next Open Shop will be Saturday, Feb 29th, 2020 starting at about 9am.

WOMEN IN TURNING • JANUARY 4TH OPEN SHOP

The women's turning group will be meeting **Saturday, February 1st, 2020 from 9am–12noon.** We meet at the Southwest Washington Woodturners meeting place: **11600 West 20 St, Vancouver, WA 98660** [\[map\]](#). The group is open to any women who are interested in learning more about turning. All levels, even those who have not turned before, are welcome.

If you plan to attend or would like to be on the email list, contact me at woodspinner@gmail.com, as there are a limited number of lathes available.

—Kathleen Duncan



CASCADE WOODTURNERS 2020 DEMONSTRATORS

Cascade Woodturners Association, another of the woodturning clubs in the Portland/Vancouver area, has some interesting demonstrators coming to their monthly meetings in the first couple months of 2020.

Thursday, February 20th

Eric Lofstrom:

Elegant Bowls and Tool Control



Thursday, March 19th

Dan Tilden:

Natural Edges and Hollowforms



Thursday, May 21st

Trent Bosch:

Vessels and Surfaces



I highly recommend attending as many club meetings as you can. You'll learn valuable tips and techniques and can interact with fellow woodturners who share your interest in all things woodturning. Hope to see you there!

Cascade Woodturners meets the 3rd Thursday of each month at @ 6:45pm at the Pacific NW Carpenters Institute 4222 NE 158th Ave, Portland, OR 97230 [\[map\]](#)

—bk

30TH ANNIVERSARY CASCADE WOODTURNERS



Past CWA Presidents – back row and standing from l-r: Pete Morrell, Jerry Harris, David Williams, Dale Larson, Howard Borer, Skip Burke, Rick Rich. seated: Ken Kirkman, Gary Borders (current President), Harvey Rogers.

On May 17, 1990, twenty six woodturners met in Beaverton, Oregon at the invitation of Dennis Stewart and formed the Cascade Woodturners. Dennis had asked the AAW for a list of all members residing in SW Washington and NW Oregon, and invited them all to the meeting. Cascade became the latest chapter of the AAW. Dennis Stewart became the first president, and we met in his shop the first year. Over the past thirty years, the chapter has moved to six different locations as it has grown and needed more space. We currently meet at the Pacific NW Carpenters Institute in Portland, Oregon, a non-profit institute for training carpenters.

Over the last 30 years, the chapter has brought in demonstrators from seven countries and all

over the United States. For the first 25 years, classes and all day demonstrations were held in Dale Larson's shop; now they are held at the Carpenter's Institute. As the chapter grew, it became too big for our space. In 1997, Ken Leach and others started the Willamette Valley WTs chapter in Salem Oregon, about an hour south (current membership 128).

That same year, Bob Tuck and others started the Northwest Woodturners on the west side of Portland (current membership 162). And in 2013, Dan Baker and others started the Southwest Washington WTs in Vancouver, about 30 minutes north of Portland (current membership 100). Cascade's current membership is 146. Some of the members belong to three chapters, each meeting on a different night of the month. Dale Larson and Howard Borer are the last two active members from the first meeting in 1990. All four chapters are strong supporters of the AAW and its educational mission.

—Dale

FREE LOCAL DEMOS

Every month, our local woodworking stores offer a variety of free demonstrations. Consider stopping by and checking them out!

WOODCRAFTERS

02/01/20	Sat 10am-3pm	Debby Neely	Woodcuts
02/08/20	Sat 10am-3pm	Mercedes McCriecht	Pyrography
02/15/20	Sat 10am-3pm	Skip Burke	Woodturning
02/22/20	Sat 10am-3pm	Fred Kline	Woodturning
02/29/20	Sat 10am-3pm	Shirley Malar	Pyrography

ROCKLER

02/01/20	Sat 11am	Bandsaw Techniques	Resaw lumber like a pro with the Jet 14" Bandsaw.
02/08/20	Sat 11am	Box Making Techniques	Complex joinery is easy with the Rockler Box Joint Jig.
02/15/20	Sat 11am	Power Carving	Easily carve, shape, and sand using Arbortech Power Carving Tools.
02/22/20	Sat 11am	Decorative Accents	Add decorative accents easily with the Rockler Corner Key Doweling Jig.

WOODCRAFT

02/01/20	Sat 1-2pm	Dust Collection
02/22/20	Sat 1-2pm	Resawing On The Bandsaw
02/29/20	Sat 1-2pm	Cutting Boards
03/07/20	Sat 1-2pm	Bandsaw Tune-Up



Woodcrafters, Portland (503) 231-0226

Rockler, Beaverton (503) 672-7266

Woodcraft, Tigard (503) 684-1428

woodcrafters.us

rockler.com

woodcraft.com

[Note: Many other fine classes and demos are also available from these local stores.]

OUR VENDOR SPONSORS ARE KEY TO OUR SUCCESS!

A key component of our financial stability as a club is our vendor sponsors. Our vendors provide periodic gift certificates for the raffle and our annual auction. In addition we receive product donations from some of them. If that were not enough, some also give individual discounts to club members. All this contributes to our financial health. We encourage all of you to patronize our vendor sponsors. It is good for you, good for them, and good for the club.

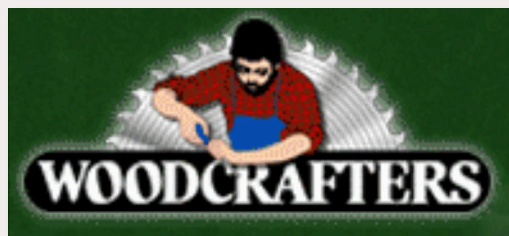
—————  *Click on each logo to go to their website*  —————



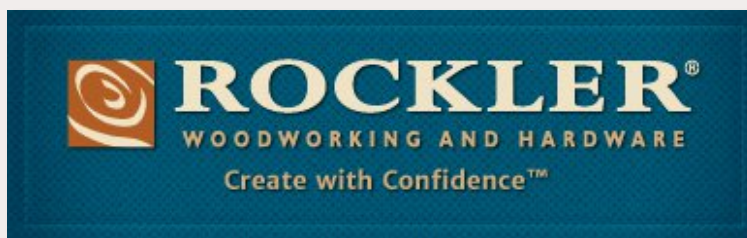
Gift Certificates



Gift Certificates + Merchandise Donations



10% Off Regular Price



Gift Certificates + Merchandise Donations + 10% Off



10% Off Regular Price

Penn State Industries

10% Off Regular Price



Gift Certificates + 10% Off



Gift Certificates + Merchandise Donations

Special note regarding Northwoods Figured Wood: Northwoods is evolving into a slab supplier and will no longer be in the turning blank business. We are sorry to see them go. They were a huge sponsor for us. We thank them deeply for their historical support and wish them the best in their new endeavor.

BULLETIN BOARD

FOR SALE & TRADE

I have a WEN 12/18 lathe for sale.
Under 30 hours. \$200

Tom Hansen
thansenhomestead@gmail.com



EUCALYPTUS WOOD

FEBRUARY UPDATE: The wood is gone.

"Darcy and a team came out and got about all that's good for turning. Please extend my appreciation to all the members that came out and helped me clean up our mess. Many thanks to all and have a great future!"

Dave and Jeanette Wingate
503-678-5658

wingatedl@gmail.com



BULLETIN BOARD

FOR SALE



Greetings – I have the pictured items for sale. I sold my Vicmarc and my new Jet is smaller and has a 1x8 spindle, so most of these items will no longer fit. \$500 for the lot, I would rather not split it up.

Threaded items fit a 1 1/4 x 8 spindle. Contains a VM120 chuck with four sets of jaws, including the huge VM Cole-style jaws. One-Way Drill Wizard fits 1" stem. 2 faceplates, 2 screw drives and an expanding collet. Also a 9" Robust toolrest w/ 1" post, a 1 1/4 x 8 tap and a One-Way 1 1/4 x 8 adapter.

—Rick Rich
(360) 839-0121

If you have woodturning tools for sale,
know of a tree being taken down in the near future,
a new source for woodturning stock,
upcoming estate sales,
need help
or have questions that need answering...

[let me know](#) and I will post it on the Bulletin Board section of next month's NWWT newsletter.

EDITOR'S NOTES

Past newsletters can be accessed from the NWWT website [here](#).

If you don't have internet access, provide me with your mailing address, and I will print out a copy, lick a stamp and mail a copy of the newsletter to you via U.S. Postal Service.

If you do not receive a courtesy email from me by the beginning of the month indicating that a new newsletter is available online, please send me your current email address.

Submissions to the newsletter are due by the last Thursday of the month.

Articles, tips, web links, classified ads and other woodturning-related items are welcome! Send them to [me](#).

For other business inquiries, contact Northwest Woodturners at:

Northwest Woodturners
P.O. Box 1157
Lake Oswego, OR 97035



NWWT membership has benefits!

Show your NWWT Membership Card to receive a discount off your purchase at Gilmer Wood, Rockler, Woodcraft, Woodcrafters and Crosscut Hardwoods.

