

NORTHWEST WOODTURNERS



Founded 1995

Pacific Northwest Oregon Chapter of The American Association of Woodturning

AAW | AMERICAN ASSOCIATION
OF WOODTURNERS

PRESIDENT'S MESSAGE — MIKE MEREDITH



It only seems like last month that I wasn't president again. Time flies. Thanks to Steve Newberry for taking over the interim presidency in a pinch. We'll move along to finish out the year, making the best of our opportunities. There is a lot to be done and a lot to be enjoyed in the remainder of 2019.

Just so you don't forget that your efforts did not go unrewarded, we

(as well as the other clubs participating) received a check this month from the Oregon Woodturning Symposium for \$1500. This is to support our efforts to promote woodturning instead of Oregon, which are the goals of the OWS. Since Northwest Woodturners is a 501(c)(3) corporation, the money comes without specification of ultimate purpose (it's a thing about one 501(c)(3) giving money to another 501(c)(3)). I don't think it would cover a vacation for the club to Bermuda so I have to scale back our goals a little bit. Which brings us the long way around to the question I actually wanted pose; what should we do with not only these dollars but the rest of our growing bank account?

Our membership is expanding. How should we spend the money to benefit the membership? The prospects come up very quickly under this heading; classes, demonstrations, capital improvements to the club's equipment, better equipment in Cottage five. Do we need to improve the equipment for demonstrations (a better light tower with better overhead camera positions, a better safety screen, a new lathe). Should we be investing in camera equipment so that Roger isn't putting his personal gear on the line every month? The board needs to hear from the membership on this question.

I think we keep this opening addition of the president's letter short to give me some time to settle back into the saddle. After getting passed the Oregon Woodturning Symposium and the Glenn Lucas demonstration and classes, which I hope everyone enjoyed as much as I did, we still have a busy year coming up. This month our demonstration is by Jay Shepard who will introduce us to what seems to be an oxymoron; the quick, high gloss lacquer finish. I'm looking forward to that.

See you on May 2.

—Mike Meredith

CLUB INFO

NORTHWEST WOODTURNERS www.northwestwoodturners.com

*Meetings are held at 7pm on
the 1st Thursday of each month at:*

The Multnomah Arts Center
7688 SW Capitol Hwy
Portland, OR 97219 [\[map\]](#)

President
[Mike Meredith](#)

Vice President
[John Beechwood](#)

Secretary
[Larry Klick](#)

Treasurer
[Roger Crooks](#)

Directors
Steve Newberry Lynne Hemmert
Mike Meredith Richard Hall
Barb Hall Jim Schoeffel

STAFF VOLUNTEERS

Monthly Raffle
Jackie Yi Kim Talley

Library
Lynne Hemmert

Photographer
Jim Schoeffel

Website
Roger Crooks

Demo Coordinator
Bill Giffin

Storekeeper
John Sutter

A/V Backup
Helen Brown

Newsletter Editor
[Bill Karow](#)
(503) 490-0325

VP'S "TURN ON THINGS" — JOHN BEECHWOOD



For the May meeting, Jay Shepard will demonstrate his process for making a blank into a high-gloss hollow form in 90 minutes. I saw his demo at the AAW symposium last year, and it is impressive!

June's demo is Reed Gray (Robo Hippy) and he is always fun to watch. Wait until you see how much he can remove using the "big ugly"!

No meeting or challenge for July, and August is the Picnic Auction.

We are still working on putting together a day to have a sharpening workshop, most likely in Cottage 5. We will nail this down at the next board meeting in May.

September, October and November demos are still being worked out.

May's Challenge is a Table Lamp keeping with the theme of following the previous demonstration. It doesn't have to be an exact reproduction, be creative.

June's Challenge is a 90 minute Hollow Form with a High Gloss Finish. (I'm not going to come and time you.) Again, challenge yourself and let's see what ends up on the table!

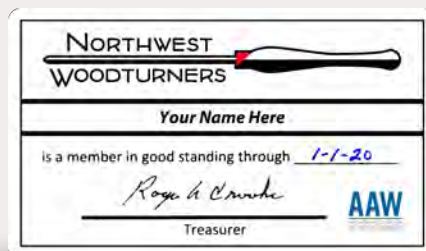
September's Challenge is going to be a Basic Bowl or something from the auction. Use any item you get from the auction to make anything you want. Bonus if you can make a basic bowl from auction items.

Are you a member of the American Association of Woodturners (AAW)? NWWT is a chapter of the AAW but it is an additional membership cost (about \$60) a year to join the AAW. As I have mentioned, last summer I was fortunate enough to attend the AAW symposium. This was the first symposium that I had ever attended and it was right here in Portland! As you might have guessed I was impressed by the quality of the event! I am planning on going to this year's symposium in Raleigh, NC. (Luckily I have a bunch of family in that area). The symposium is only a part of what the AAW does, and I won't go into all of it here. I will say that the emailed articles and magazine are amazing. And they are delivered to your house and to your email! The cost of the membership is a bargain when you see what info is offered! Long before I even considered going to the symposium, I was always reading and rereading articles while drooling over the fine pieces displayed in the magazine. This has motivated me to push myself to do more complex pieces and take in the beauty of the works of art. If you want to see new and exciting works and get tips consider becoming a member. I will bring a copy of the latest magazine to the next meeting if you would like to take a look.

—John

MEMBERSHIP CARDS

Please don't forget to renew your Northwest Woodturners club membership!



As always, [paying on-line](#) is the easiest for me and less error-prone, but we appreciate your money any way you want to pay. Just a reminder, several years ago we moved our membership plan from an annual plan (Jan-Dec) to an anniversary plan (12 months from when you join). You get a renewal message a month before your membership expires, so wait until you get your renewal notice to pay. Also, **don't forget to [renew your AAW membership](#)**, which is an annual plan, so join or renew now!

—Roger

MAY DEMONSTRATION • JAY SHEPARD

Blank to High-gloss Lacquer Hollow-form in 90 Minutes!*Quick Finished Hollow Form Using a Wipe-on Water-Based Lacquer Finish*

Many people say they are impressed with my finishes, but claim they don't have the time or patience to apply the finish themselves. This led me to develop a quick wipe-on lacquer finish that takes a short amount of time and results in a nice high-gloss finish.

This demonstration will cover:

- Hollow form turning
- Surface preparation
- Applying a shop made, wipe-on water-based lacquer
- Finish sanding
- Buffing

Below are some examples of Jay's amazing work. Don't miss his demo at the NWWT meeting next Thursday, May 2.



LAST MONTH'S MEETING • RICK RICH DEMO



Making a Table Lamp.

Last month's meeting was a lot of fun!

Rick showed us how to create a complete table lamp from blanks and installed a lamp kit that plugs in and turns on.

He started by drilling the body of the lamp, then face turned a base and spindle turned the three feet and main lamp portion.

To turn the drilled spindle portion, he used a lathe-made drive. He then completed the lamp by putting it all together and installing a basic lamp kit (he purchased at from Fred Meyer). He turned it on and voila! It worked!

Thanks for coming to the demo!

—bk



TIP OF THE MONTH

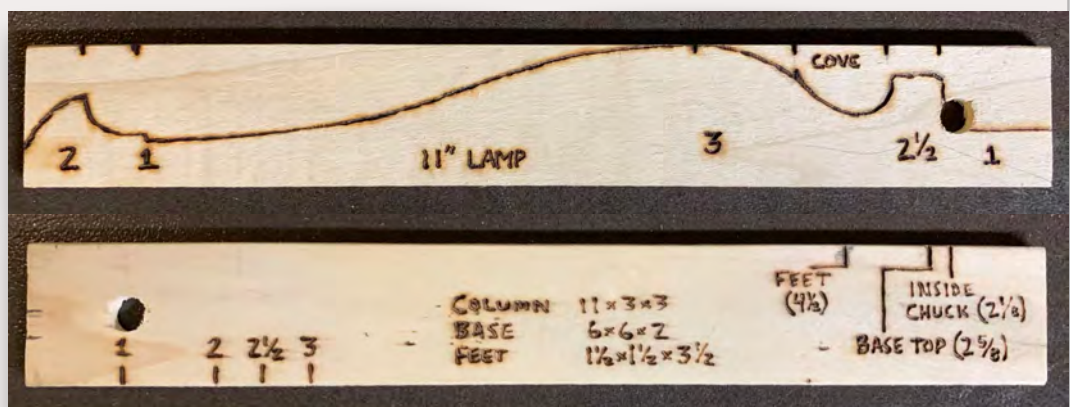
Story Sticks:

In his demo last month, Rick Rich shared with us his practice of creating a story stick that functions as a handy reference guide for a lot of his projects.

It is simply a strip of scrap wood that contains all of a project's critical measurements marked in full-scale proportion. Taken together, these marks present a precise visual representation—or "story"—of the project.

Instead of the old saying, "Measure twice, cut once," using a story stick will let you "Measure once, cut forever!"

—bk



THIS MONTH'S CHALLENGE — TABLE LAMPS

There were no Bird's Mouth Bowl Challenge entries this month, but we did have twelve pieces in the Show-n-Tell. Rob McIlwain won the Challenge with his trio of beautifully figured Maple Burl, Cherry and Maple Beehive bowls. Good on ya, Rob!

The May Challenge, "TURN A TABLE LAMP" is another good one!

For every monthly meeting, it's our hope that members – whether beginner, intermediate or advanced – will take part in the Monthly Challenge, as well as bring pieces to the Show-n-Tell. It's always fun and informative to see what (and how) our fellow members are turning. And the criticism is always constructive!



APRIL SHOW-N-TELL

• Photography by Jim Schoeffel •

WINNER!



Rob McIlwain
Bowl
Maple w/Beehive
5-3/4" dia. x 2-1/4" high

WINNER!



Rob McIlwain
Bowl
Cherry
7-1/2" dia. x 2" high

WINNER!



Rob McIlwain
Bowl
Maple Burl
5" dia. x 1-1/2" high

APRIL SHOW-N-TELL

• Photography by Jim Schoeffel •



David Perez
Segmented Bowl
Padauk, Jatoba, Walnut, Purple Heart, Maple
10-5/8" dia. x 5" high; 2-1/2" dia. base
525 segments



Phil Lapp
Bowl
Spalted Horse Chestnut
10-1/2" dia. x 3-1/4" high



MARCH SHOW-N-TELL

• Photography by Jim Schoeffel •



David Perez
 Hollow Vessel
 Black Acacia
 Wipe-on-Poly, Buffed w/ Beal System
 8-1/2" dia. x 4" high



Steve Newberry
 Multi-axis Winged Bowl
 Elm, Walnut, Copper
 Wings: 13" x 5-1/2" x 4-1/2" high
 Bowl: 3" dia. x 3" deep
 Copper bowl was shaped by metal spinning technique

MARCH SHOW-N-TELL

• Photography by Jim Schoeffel •



David Williams

Fern Vessel

Maple

13-1/4" dia. x 8-1/4" high; 3" dia. base



Miguel Hernandez

Goblet

Laburnum

2-3/4" dia. x 8-1/2" tall; 3" deep goblet

MARCH SHOW-N-TELL

• Photography by Jim Schoeffel •

**Larry Klick**

Bowl

Spalted Maple

Walnut Oil finish

9" dia. x 4" high; 3-1/2" dia. base

**Larry Klick**

Platter

Oak w/ Copper accents

Walnut Oil and Wax finish

11" dia. x 2" high

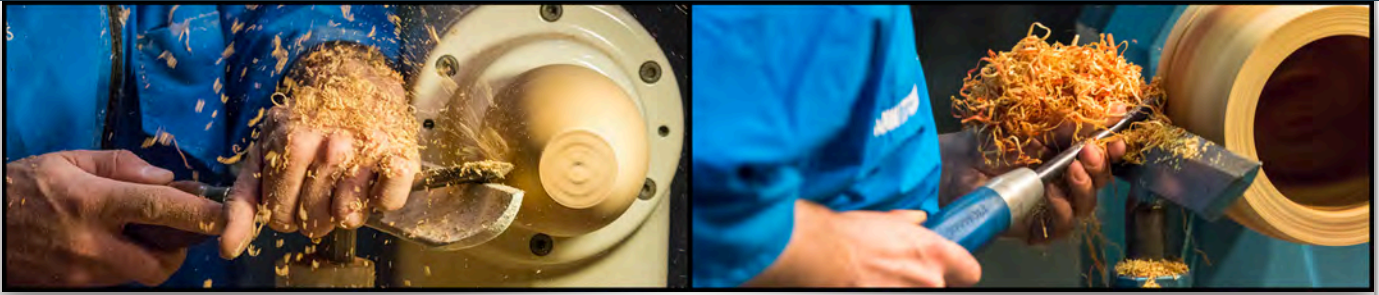
**Miguel Hernandez**

Finial

Laburnum

2" dia. base x 7-1/2" tall

AAW — COMPLIMENTARY GUEST MEMBERSHIP



By signing up for a [Complimentary Guest Membership](#), you can have limited access to a sampling of AAW resources for a full 60 days. You'll be able to explore what the AAW has to offer, kick our tires, and hopefully decide to become a full-fledged, paid AAW member to benefit from everything the AAW has to offer. Click [here](#) to view/download a list of publications and services available to full/paid AAW members.

AAW | AMERICAN ASSOCIATION
OF WOODTURNERS

NWWT STORE — UPDATE



Restock: We have restocked the store with Klingspor 2" and 3" sanding discs and the Mirka sanding pads.

Remember the Mirka pads can be used wet or dry and works great on flat work.

Also remember, as a NWWT member, you get a %10 discount on many Klingspor items. To see your discount, you must log into the website, woodworkingshop.com.

New Items: Whenever I place a new order, I look for things that might be of interest to members and that I use all the time. I ordered 5 of these (right). \$10 each. If these sell quickly, I will order more.

New **2" & 3" H&L Disc, Bone Shaped Hand Pad** is a handy accessory for anyone who use sanding discs. It is great for hand sanding and works for any hook & loop paper including Abranet that I cut into small strips or squares. \$10 each.

Also, **Michael Hosaluk's Carbide Burnishers** (\$10) are in stock. Great for forming a continuous, sharp-edged, wire "hook" on all your scrapers.

—Roger



MAY'S TURNING TEASER — QUESTION



Each month, if space allows (and we don't run out of material), we'll show you a photo and ask a question or two about it.

We'll let you think about it for a month, then give you our thoughts in the next newsletter.

May's Question:

How we handle our tools has a direct effect on our success with the cut, regardless of whether it goes right or wrong?

What might be a bad idea about these two grips?

(Answer in the June newsletter.)



APRIL'S TURNING TEASER — ANSWER



What does a lathe do as a consequence of its similarity to a glass of ice water?

Answer: Sweat, then rust.

This can be a problem any time the ambient temperature of the shop rises dramatically. Folks with unheated shops will experience the problem to a more extreme level, but it can be a problem anytime if you are not watchful.



What happens: Moisture condenses out of the air onto relatively colder objects, like water glasses and cast iron machinery (not just lathes). Left wet, cast iron will rust overnight. Serious pitting can result, compromising the accuracy of the machine.

Likewise, when you are done with the fun of turning green bowls, clean up your machinery right away. You can buy a lifetime supply of rust inhibiting lubricants for the cost and bother of having your bed-ways machined flat again.



Think you might have a good submission? Send us a photo and we'll try to include it in a future newsletter.

NORTH WOODS FIGURED WOOD



North Woods Figured Woods had a banner Warehouse Sale in March.

Due to such great response at last month's Open House, Les and Susan are extending their Open House Warehouse **Discount for the entire month of April**. Still a couple more days to grab some great deals on some awesome wood!

Check their website for more information: [North Woods Figured Woods](http://NorthWoodsFiguredWoods.com)



SAFETY (NOT ONLY AT THE LATHE)



After not being able to turn for 3 weeks after smushing my finger at the lathe last month (*see last month's newsletter safety article to read all about it*), I was just getting back in the groove, finish-turning some nice, big, dry Red Oak bowls that I rough-turned about two years ago. I'd begun fuming some of them and thought about ebonizing a few others. I also started to experiment with dyeing a couple small pieces with black leather dye. Lots of stuff going on, the shop is humming!

Then I took a break from turning to sharpen my shop knife. It's a Morakniv from Sweden, my go-to cutting tool. It's great for lopping off the nubs on the base of bowls, cutting tape and cloth, etc. It gets used a lot. So I sharpen it a lot. I was finishing up on the finest stone, when I had the bright idea to strop it as well. You know, for the ultimate edge. On the "one last pass" the knife slipped in my right hand and decided to test its sharpness on my left middle finger. 3cm from tip to knuckle. And deep. Six stitches later, I'm replaying the scene in my mind - what I did wrong and how it could have been avoided.

It comes down to this: **staying in the moment**. Rather than allowing my mind to wander and wonder about what piece I was going to turn next or what finish I would use on it, I should have been 100% focused on the task at hand. Especially with an extremely sharp object in my hand.

Being in the moment allows you to concentrate on only that one thing, without distractions. Giving yourself fully to the experience, you naturally learn how to become better at it.

Come to think of it, that's exactly the reason I started turning wood on a lathe.

Stay sharp and be safe.

—Bill Karow

FROM THE AAW ARCHIVES

It's Going to Happen Dennis Belcher

Due to the nature of what we do, accidents will happen. We use machines designed to cut wood but that cut flesh just as easily. Surgically sharp blades cut fifty-pound chunks of wood that revolve at hundreds of revolutions per minute. Noise levels are guaranteed to cause hearing loss over time. The ever-present dust is in the air we breathe. All these things make what we do potentially dangerous.

The AAW devotes a great deal of energy and resources to educating turners how to work safely. Even so, accidents will still happen. Last year I gave a presentation to my local chapter (the Wilmington Area Woodturners) on the topic of *Turning 'til 90*. My purpose was to increase the awareness of safe practices so that woodturners could continue to turn safely over long periods of time. At the end of my presentation, I handed out a quiz I think every woodturner should fill out and post in his or her shop. For an electronic version, go to the AAW's website at woodturner.org/products/aw. Print a copy today for use in your shop!

This quiz has two intents: First, to increase awareness of what needs to happen after an accident occurs. A little advance preparation goes a long way to minimize the consequences of an accident, which will get us back into the shop that much faster. Second, the quiz can make us notice some of the less obvious things we need to do to be safe.

My challenge to you is to make a copy of the quiz, take it to your shop, and complete each question. Take corrective action on those items you realize need to be improved. Bad habits can be changed, but only if we stop to consider the things we do that may be unsafe.

It's Going to Happen Quiz

- The nearest phone to use in an emergency is _____.
- Nearest hospital approved by my insurance carrier is _____.
- Nearest urgent-care facility approved by my insurance carrier _____.
- Ambulance service closest to my home is _____. They are _____ minutes away.
- I summon an ambulance by calling _____.
- If I need help in the shop from my spouse or neighbor, I call _____.
- My shop fire extinguisher is located _____.
- The charge of my fire extinguisher was last checked on _____.
- I regard my dust collection system as: ☐ inadequate ☐ adequate ☐ good ☐ superb
- I consistently wear hearing protection in my shop. ☐ yes ☐ no
- The electrical service/supply in my shop is: ☐ inadequate ☐ adequate
- My plan if I develop an allergic reaction to a wood species is _____.
- I have a faceshield. ☐ yes ☐ no
- I wear a faceshield or safety glasses/goggles when I turn. ☐ never ☐ sometimes ☐ always
- I wear a dust mask or dust helmet when I turn. ☐ yes ☐ no
- I consistently use properly sized tools for each project (large tools for larger pieces, small tools for small projects). ☐ never ☐ sometimes ☐ always
- I have reviewed the "near" accidents I have experienced on each machine that I own. ☐ yes ☐ no
- I know and stay out of the "line of fire" for my lathe. ☐ yes ☐ no
- I sit in the line of fire when watching a demonstration. ☐ yes ☐ no
- I have a safety stop for my lathe that is out of the line of fire. ☐ yes ☐ no
- I use the tailstock when roughing out. ☐ never ☐ sometimes ☐ always
- I use the tailstock when turning out-of-round pieces. ☐ never ☐ sometimes ☐ always
- The tool in my shop on which I most need to improve/change/review my work habits from a safety standpoint is _____.
- I use a safety shield to protect spectators when doing a demonstration. ☐ yes ☐ no
- I clean and organize my shop regularly. ☐ yes ☐ no
- The woodturning tool that I am most afraid of is _____.
- I need to change my use of _____ to improve safe work habits.
- My body clock makes _____ the most dangerous time of the day to work with power tools.
- The one thing that I should do to improve the safety of my shop is _____.

APRIL 27TH & MAY 25TH • DALE LARSON • OPEN SHOP

**April and May Open Shops**

For about the last 10 years, Howard Borer and I have hosted Open Shop Saturday in my shop in Gresham. The idea behind Open Shop is to help new turners with projects and ideas.

We have a good group of experienced turners who help new turners mount the wood on the lathe and learn how to sharpen and present their tools to the wood.

I like to say: *We have no standards, everyone is welcome.*

When: Generally the last Saturday of the month. This month, it will be **Saturday, April 27th**. Next month, it will be **Saturday, May 25th**, starting at about 9am and going to around noon.

Where: Dale's shop at [5010 SE Regner Rd, Gresham](#).
(503) 661-7793

—Dale

Photos from March 30th Open Shop



JUNE 8 • R. E. VAUGHN WOODTURNING SCHOOL

SOUTHWEST WASHINGTON WOODTURNERS

R.E.VAUGHN WOODTURNING SCHOOL

1600 WEST 20TH STREET • VANCOUVER, WA 98660



Saturday, June 8
SPINDLE TURNING BASICS
 Lead Instructor: **Rick Rich**

\$100 includes all blanks.

This one day basic spindle turning class focuses on turning several 'skew' exercises and two fun, easy to replicate projects – a stick pen and tool handle w/ ferrule. The class covers mounting the blanks, proper tool control for basic cuts and turning several exercises and projects over the day.

Class is limited to 8 participants. Pre-registration required, contact Brian Harte at blharte@gmail.com or call 360-606-7272 to register.

Payment is required at the start of class. Make checks payable to the SWWW. If there are less than four registrants, the class may be cancelled. Class starts at 8:30 and concludes at 3:30. Lunch, snacks, blanks and face shields provided.

Bring your own bowl gouges if you have them. Four sets of tools are available for use, please let Brian know when registering if you will need them.

JUNE 28 • R. E. VAUGHN WOODTURNING SCHOOL

SOUTHWEST WASHINGTON WOODTURNERS

R.E.VAUGHN WOODTURNING SCHOOL

1600 WEST 20TH STREET • VANCOUVER, WA 98660



Friday, June 28
TURN A NATURAL EDGE FORM
 Lead Instructor: **Dan Tilden**

\$135 includes a burl blank

This one day class focuses on turning a natural edge burl blank to create a piece of art. The class covers turning a basic bowl from a blank, proper tool control for basic cuts.

Class is limited to 8 participants. Pre-registration required, contact Brian Harte at blharte@gmail.com or call 360-606-7272 to register.

Payment is required at the start of class. Make checks payable to the SWWW. If there are less than four registrants, the class may be cancelled. Class starts at 8:30 and concludes at 3:30. Lunch, snacks, blanks and face shields provided.

Bring your own bowl gouges if you have them. Four sets of tools are available for use, please let Brian know when registering if you will need them.

JULY 27 • R. E. VAUGHN WOODTURNING SCHOOL

SOUTHWEST WASHINGTON WOODTURNERS

R.E.VAUGHN WOODTURNING SCHOOL

1600 WEST 20TH STREET • VANCOUVER, WA 98660



Saturday, July 27

SPIRAL TOOL USE ON SPINDLES & BOWLS

Lead Instructor: **John Beechwood**

\$100

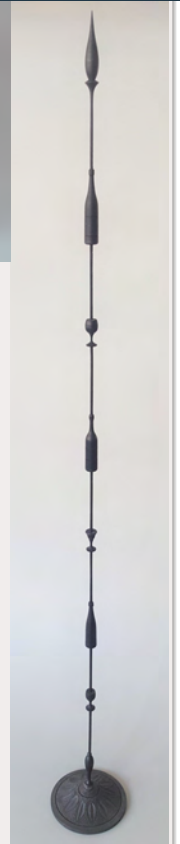
This one day class focuses on turning a spindle and bowl and then using a spiral cutting tool to create a piece of art. The class covers turning a basic spindle and bowl from blanks, proper tool control for basic cuts and proper use of a spiral tool. Bring your own turning tools if you have them.

Class is limited to 8 participants. Pre-registration required, contact Brian Harte at blharte@gmail.com or call 360-606-7272 to register.

Payment is required at the start of class. Make checks payable to the SWWWT. If there are less than four registrants, the class may be cancelled. Class starts at 8:30 and concludes at 3:30. Lunch, snacks, blanks and face shields provided.

Bring your own bowl gouges if you have them. Four sets of tools are available for use, please let Brian know when registering if you will need them.

AUGUST 5-8 • ELI AVISERA IS COMING TO PORTLAND



There is **ONLY ONE** spot available for [Eli Avisera's](#) hands-on class on August 7-8!

Eli will be teaching two 2-day classes Aug 5-6 and 7-8 at [Dale's shop](#). Because of Eli's travel schedule, we were limited to these days. Classes will be limited to eight students each. The cost will be \$225 for each 2-day class.

Eli is one of the best demonstrators and teachers in the world. He travels all over the world teaching woodturning. It has been seven years since we had Eli here in Portland.

Attached are a few pictures of his work and there are many more on the internet. This is a chance to spend two days with one of the top woodturners in the world.

If you are interested in signing up for one of the classes, contact Dale at 503-661-7793 or at woodbowl@frontier.com. If I fill the classes, I will take reserve names. We tend to have a few openings as life interferes, and some members have to drop out at the last minute.

—Dale

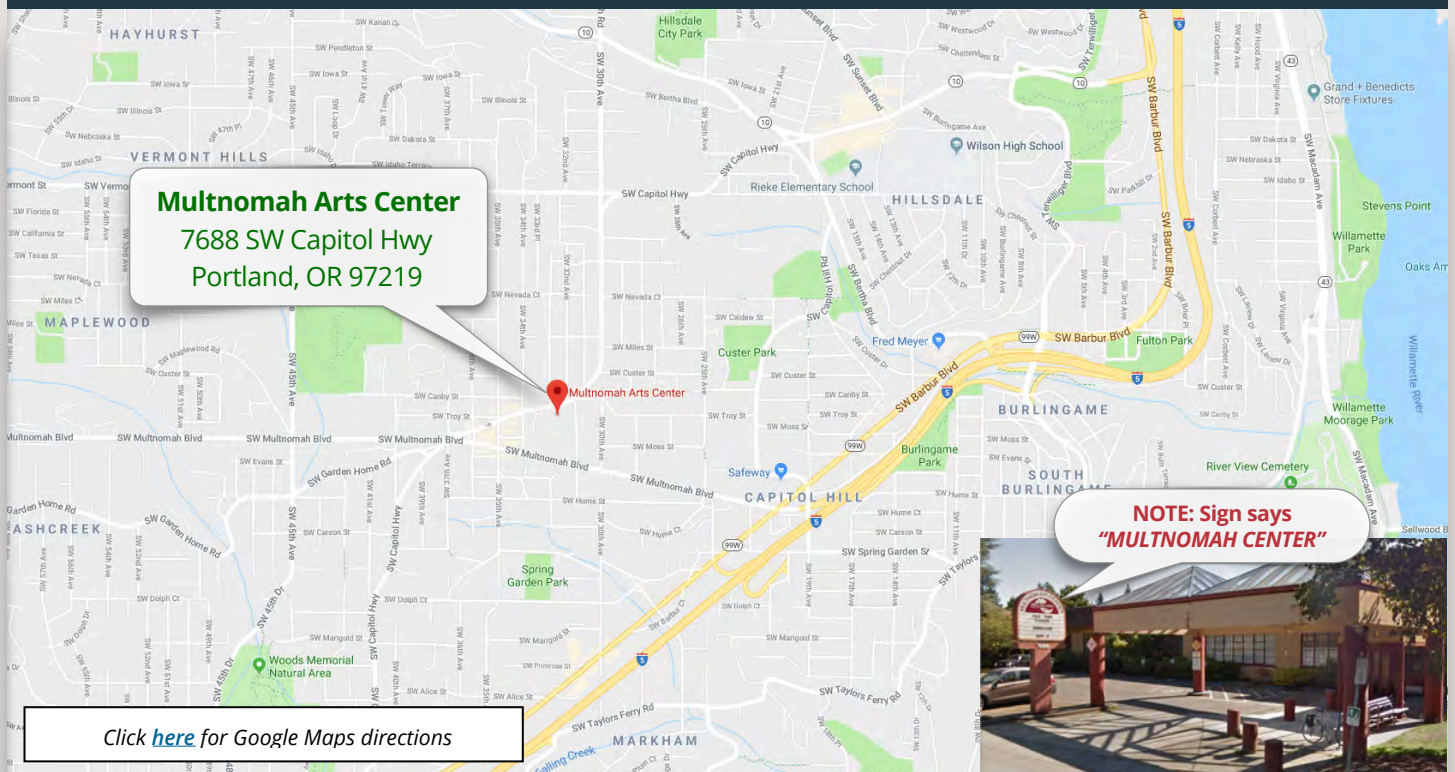
2019 NWWT MEETING SCHEDULE & PROGRAMS

NORTHWEST WOODTURNERS

1st Thursday of each month at 7:00 PM in the Main Auditorium
The Multnomah Arts Center, 7688 SW Capitol Hwy, Portland, OR 97219

2018	PROGRAM	CHALLENGE
Thursday, January 3	Annual Tool Swap Meet	"Rescued" (Repaired) Turnings
Thursday, February 7	Dale Larson – "Picking the Best Part of the Tree"	New-Tool Turnings
Thursday, March 7	Bill Karow – "Bird's Beak Vases"	Naturally Figured Pieces
Thursday, April 4	Rick Rich – "Table Lamp"	Bird's Mouth Bowls
Thursday, May 2	Jay Shepard – "Finishing"	Turn a Table Lamp
Thursday, June 6	Reed Gray (aka RoboHippy) – "Bowl Turning"	:90 Hollow Form with Gloss Finish
Thursday, July 4	No Meeting	None
Saturday, August 3	Picnic and Wood Auction	None
Thursday, September 5	TBD	TBD
Thursday, October 3	TBD	TBD
Thursday, November 7	Elections	Holiday Pieces / Ornaments
December	No Meeting	Happy Holidays!

MAP TO THE MULTNOMAH ARTS CENTER



OTHER WOODTURNING CLUBS • MEETINGS & PROGRAMS

One meeting every month not enough?*Check out what other clubs around our area are doing!**(Please click on the clubs' website links to verify the information presented below.)*

WOODTURNERS OF OLYMPIA • Olympia, WA
woodturnersofolympia.org

2nd TUESDAY of every month @ 6:30 PM

First Baptist Church of Olympia
 904 Washington St. SE, Olympia, WA 98507 [\[map\]](#)

May 14, 2019:

Turn and Learn!

Sharpening - Larry Miller
 Skews - Rich Chapman
 Hollowing - John Hampton
 Scrapers - Ken Conte
 Gouges - Dave West



WILLAMETTE VALLEY WOODTURNERS • Salem, OR
willamettevalleywoodturners.com

2nd THURSDAY of every month @ 6:30 PM

Center 50+ Senior Center
 2615 Portland Rd, NE Salem, OR 97303 [\[map\]](#)

May 9, 2019:

TBD



CASCADE WOODTURNERS • Portland, OR
cwa49.wildapricot.org

3rd THURSDAY of every month @ 6:30 PM

Willamette Carpenters Training Center
 4222 NE 158th Ave, Portland, OR 97230 [\[map\]](#)

May 16, 2019:

Andi Wolfe

Texturing w. pyrography,
 carving, scorching, coloring,
 creating patinas



SW WASHINGTON WOODTURNERS • Vancouver, WA
southwestwashingtonwoodturners.com

4th THURSDAY of every month @ 7:00 PM

Friends of the Carpenter's Center
 1600 W 20th St, Vancouver, WA 98660 [\[map\]](#)

May 23, 2019:

Auction

"Pizza + Auction = Fun"



BEAVER STATE WOODTURNERS • Eugene, OR
beaverstatewoodturners.com

4th THURSDAY of every month @ 6:00 PM

Coburg Community Charter School
 91274 N Coburg Rd, Coburg, OR 97408 [\[map\]](#)

May 23, 2019:

TBD

2019 NATIONAL & REGIONAL SYMPOSIA

July 11-14, 2019

[AAW 33rd International Woodturning Symposium](#)

Raleigh, NC

August 23-25, 2019

[28th Annual S.W.A.T. \(Southwest Association of Turners\) Symposium](#)

Waco, TX

September 13-15, 2019

[Rocky Mountain Woodturning Symposium](#)

Loveland, CO

September 20-22, 2019

[Turning Southern Style Symposium](#)

Dalton, GA

October 17-20, 2019

[Turning 2019 at Ohio Valley Woodturners Guild](#)

West Harrison, IN

June 4-7, 2020

[AAW 34th International Woodturning Symposium](#)

Louisville, KY

LOCAL WOODWORKING STORES' FREE DEMOS

Many other fine classes and demonstrations are available from our local stores.

Date	Free Demo	Day	Time	Location
04/27/19	Making Shoot Board For End Grain	Sat	1-2pm	Woodcraft, Tigard
04/27/19	Shirley Malar: Pyrography	Sat	10am-3pm	Woodcrafters, Portland
04/27/19	Cabinet Hardware 101	Sat	11am	Rockler, Beaverton
05/04/19	Applying A French Polish	Sat	1-2pm	Woodcraft, Tigard
05/04/19	Kevin Poest: Woodturner and Artist	Sat	10am-3pm	Woodcrafters, Portland
05/04/19	Pen Turning	Sat	11am	Rockler, Beaverton
05/11/19	Hardware - Euro Hinges	Sat	1-2pm	Woodcraft, Tigard
05/11/19	Jim Tharp: Woodcarver	Sat	10am-3pm	Woodcrafters, Portland
05/11/19	Tablesaw Safety with Microjig	Sat	11am	Rockler, Beaverton
05/18/19	CNC Demo	Sat	1-2pm	Woodcraft, Tigard
05/18/19	Skip Burke: Woodturner	Sat	10am-3pm	Woodcrafters, Portland
05/18/19	Spray on Finishes	Sat	11am	Rockler, Beaverton
05/25/19	Kevin Poest: Woodturner and Artist	Sat	10am-3pm	Woodcrafters, Portland
05/25/19	Hand Cut Dovetails	Sat	1-2pm	Woodcraft, Tigard
05/25/19	Dovetails Made Easy	Sat	11am	Rockler, Beaverton
06/01/19	Woodturning Techniques	Sat	11am	Rockler, Beaverton
06/01/19	Choosing Right Clamp For The Job	Sat	1-2pm	Woodcraft, Tigard
06/01/19	Skip Burke: Woodturner	Sat	10am-3pm	Woodcrafters, Portland
06/08/19	Bandsaw Techniques	Sat	11am	Rockler, Beaverton
06/08/19	Hand Plane Tune Up	Sat	1-2pm	Woodcraft, Tigard
06/08/19	Shirley Malar: Pyrography	Sat	10am-3pm	Woodcrafters, Portland

Please visit the store websites to verify the information presented above.



Rockler, Beaverton

(503) 672-7266

rockler.com

Woodcraft, Tigard

(503) 684-1428

woodcraft.com

Woodcrafters, Portland

(503) 231-0226

woodcrafters.us

OUR BUSINESS PARTNERS

Northwest Woodturners encourages our members to visit these business partners to find the many great products they carry and to stock up on the necessary items for your wood turning needs.

Be sure to remind the sales clerk that you are a member of Northwest Woodturners! Our business partners provide NWWT with generous gifts based on member purchases.




Create with Confidence™

10% off non-sale items for club members
(excludes power tools, Leigh and Porter-Cable dovetail jigs, CNC Shark)

11773 SW Beaverton-Hillsdale Hwy, Beaverton, OR 97005
(503)672-7266 store17@rockler.com

Delta, JET, and Powermatic lathes, turning tools, turning stock, turning kits, abrasives, finishes, plus a whole lot more!

WOODCRAFT®
Helping You Make Wood Work®

Hours

Sunday 9am-5pm • Monday 9am-7pm • Tuesday 9am-7pm
Wednesday 9am-7pm • Thursday 9am-9pm • Friday 9am-7pm
Saturday 9am-6pm

Independently Owned
& Operated Franchise
12020 SW Main Street
Tigard, OR 97223

Phone: (503) 684-1428
Toll Free: (866) 684-1428
Fax: (888) 312-9663
woodcraft312@woodcraftportland.com

Here's a suggestion: After you've purchased an item from one of our business partners who gave you a discount because you are a member of NWWT, take a moment and contact them via their website or an e-mail and thank them for supporting NWWT.

BULLETIN BOARD

**LATHE FOR SALE**

It belonged to my son who now lives in Texas. **Jet Mini Lathe JML-1014 with the chuck included.** It has been stored in a dry place, coated with Vaseline to protect and covered. I'll clean and polish as soon as it is listed. It has not been used very much. The manual and two turning books are also included.

If interested, please email me at tsitra.m@gmail.com

–Marilyn Joyce

If you have woodturning tools for sale,
know of a tree being taken down in the near future,
a new source for woodturning stock,
upcoming estate sales,
need help
or have questions that need answering...

[let me know](#) and I will post it on the Bulletin Board section of next month's NWWT newsletter.

EDITOR'S NOTES

Past newsletters can be accessed from the NWWT website [here](#).

If you don't have internet access, provide me with your mailing address, and I will print out a copy, lick a stamp and mail a copy of the newsletter to you via U.S. Postal Service.

If you do not receive a courtesy email from me by the beginning of the month indicating that a new newsletter is available online, please send me your current email address.

Submissions to the newsletter are due by the last Thursday of the month.

Articles, tips, web links, classified ads and other woodturning-related items are welcome! Send them to [me](#).

For other business inquiries, contact Northwest Woodturners at:

Northwest Woodturners
P.O. Box 1157
Lake Oswego, OR 97035

NWWT membership has benefits!

Show your NWWT Membership Card to receive a discount off your purchase at Gilmer Wood, Rockler, Woodcraft, Woodcrafters, North Woods Figured Wood, and Crosscut Hardwoods.

