

# NORTHWEST WOODTURNERS



Founded 1995

Pacific Northwest Oregon Chapter of The American Association of Woodturning

AAW | AMERICAN ASSOCIATION  
OF WOODTURNERS

## PRESIDENT'S MESSAGE — MIKE MEREDITH



Larry Klick has already revolutionized the position of club secretary. There was a board meeting agenda and minutes of the board meeting are posted on the website.

A number of items were brought up at the board meeting. First among these are the capital expenditure items. It was decided that we should

invest in those things that make our demonstrations better. The simple jobs under this heading include better lighting for the lathe and improved video equipment to allow us to take advantage of the MAC auditorium's projector and sound system (and not damage Roger's equipment). Those are the simple jobs. We also decided then our Jet 1642 is headed for some small repairs and the club could use a new lathe. Sometimes I think tools are like skis; you don't really wear them out you just get tired of looking at the graphics. Because of the limitations of the electrical system in the MAC, our search must be limited to lathes running on 110 volts. I learned an interesting thing from Dale Larson while we were cutting the wood for the Lucas class. All of his lathes are 1.5 hp for safety reasons. His conclusion was that only a true production turner really needs the additional power of a two or 3 hp lathe. There are two outstanding candidates for us in this class of lathes; the Laguna 18 – 32 and the Robust Sweet 16. The truly good news is that the treasury has enough money for either one (but we wouldn't turn down directed donations), so it's a matter of what we want. Both have a good reputation and would serve our needs very well. A broader discussion will develop on this purchase to involve the membership because it is a large expenditure.

In additional news, NWWT is now a member of the Multnomah Village Business Association. Aside from being the good neighbor thing to do, this allows us to have a free table at the Multnomah Days celebration on August 17th. This could be a venue for our membership to sell their work if they so desire and also a chance for club outreach. The club would take payments and charge a modest 10% commission. The project needs someone to take charge and organize the effort.

Back in the old days, when we had the facilities at ChemWest at our disposal, the club used to have "Learn to Turn" Saturdays. We

## CLUB INFO

### NORTHWEST WOODTURNERS [www.northwestwoodturners.com](http://www.northwestwoodturners.com)

*Meetings are held at 7pm on the 1st Thursday of each month at:*

The Multnomah Arts Center  
7688 SW Capitol Hwy  
Portland, OR 97219 [\[map\]](#)

#### President

[Mike Meredith](#)

#### Vice President

[John Beechwood](#)

#### Secretary

[Larry Klick](#)

#### Treasurer

[Roger Crooks](#)

#### Directors

Steve Newberry Lynne Hemmert  
Mike Meredith Richard Hall  
Barb Hall Jim Schoeffel

### STAFF VOLUNTEERS

#### Monthly Raffle

Jackie Yi Kim Talley

#### Library

Lynne Hemmert

#### Photographer

Jim Schoeffel

#### Website

Roger Crooks

#### Demo Coordinator

Bill Giffin

#### Storekeeper

John Sutter

#### A/V Backup

Helen Brown

#### Newsletter Editor

[Bill Karow](#)  
(503) 490-0325

## PRESIDENT'S MESSAGE — CONTINUED

now know this as Open Shop. The Open Shop at Dale's has been so successful that the board thought that we should try to arrange a regularly scheduled, open gathering for anyone to come and ask questions or just hang out with the club. This program will depend on the availability of Cottage 5 and, of course, interest of the membership. Initially, these would be held each quarter on a Saturday morning. It's sometimes difficult for new turners just walk up and ask somebody a question. It shouldn't be. That's one the purposes of the club: turner education. The Open Shop is an excellent opportunity to ask those questions without somehow feeling intimidated. It will cost us a little money, not very much, but I think the outcome could well justify that expenditure.

To further expand on the topic of sharing our knowledge, I want to remind members that the club website has a gallery. Each member can post pictures of their work to their page in the gallery. This is a great way to see what everyone is doing and to identify that person you should ask that question or with whom you can discuss that technique you've been dying to try.

Also, to expand on the topic of sharing our knowledge, we have the Sharpening Class coming up sometime in the near future. Questions should be directed to VP Beechwood. This has been a very popular and successful class in the past, and I have no reason to believe that this edition won't be just as popular.

It's never too early to remind the group that the election of officers will be held November. At no point in the officer selection process will anyone test you on your turning ability. Club officers don't need to be experienced turners, they just need to be people willing to tackle the job of helping this club meet the needs of the membership.

This month our demonstrator is Reed Gray, aka RoboHippy, a well-known and very experienced bowl turner from Eugene. Reed is known for making interesting tools. The [chainsaw chopsaw](#) is still one of the coolest tools I've come across. Reed has visited the club on a couple of occasions and his demonstrations are always excellent, addressing questions about tools, techniques, clean cuts and efficient use of wood you have. Keep an eye out for the Big Ugly Scraper. When you're through fooling around and want to move some serious wood, this is the tool of choice. I suspect Reed might have a couple he would be willing to part with while he is here.

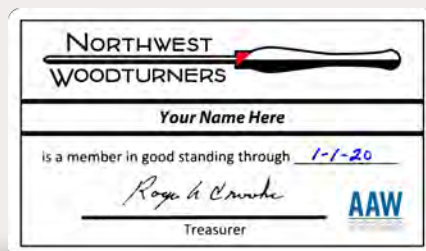
Just a reminder, no meeting in July, and the club auction and picnic is on August 3rd.

See you at the club meeting.

—Mike

## MEMBERSHIP CARDS

**Please don't forget to renew your Northwest Woodturners club membership!**



As always, [paying on-line](#) is the easiest for me and less error-prone, but we appreciate your money any way you want to pay. Just a reminder, several years ago we moved our membership plan from an annual plan (Jan-Dec) to an anniversary plan (12 months from when you join). You get a renewal message a month before your membership expires, so wait until you get your renewal notice to pay. Also, **don't forget to [renew your AAW membership](#)**, which is an annual plan, so join or renew now!

—Roger

## VP'S "TURN ON THINGS" — JOHN BEECHWOOD



For the **June demo** is Reed Gray (Robo Hippie) and he is always fun to watch. Wait until you see how much he can remove using the "big ugly"! THIS DEMO WILL BE IN THE GYM!!!!

**June's Challenge** is a 90 minute hollow form with a gloss finish. 90 minutes from the time you get it in the chuck until it's finished! There is a good chance I will enter a piece that is still in the chuck because I ran out of time! (I'm not going to come and time you.) Again challenge yourself and let's see what ends up on the table!

**August is the picnic and auction.** This is always a fun time! Do you have something to donate to the auction?

For the **September demo** we are going to do a **multi-station demo**. However I want to do things a little different this time. Each station will do a short 10-15 minute demo, take a short break and then repeat. This way you don't have to choose one demo to watch, you can see a few short demos. As for the subject for each demo I want to ask you what you want to demo? I would like to offer this to anyone who hasn't ever done a demo first. Let me know what you can show everyone in 10 -15 minutes. This is a great way to get comfortable showing others how YOU do something. It is not limited to lathe work! If you do pyrography then show that! If inlays are your thing then show everyone! If your talent is putting chips on the floor, then show us how you put chips on the floor! We only have three lathes so if you want to demo something on the lathe speak up fast. Shoot me an email [jbeechwood3@gmail.com](mailto:jbeechwood3@gmail.com) and let me know what you can do! You have 3 months to prepare, but I would like to have the details worked out before the August BBQ! If you need help preparing then let me know and I will assist. I will most likely bring my sharpening equipment and do a quick demo on that.

**October's demo** is going to be **Roger Crooks**. I will update with the topic once that is decided.

**November** will hopefully be **Stephen Hatcher** doing inlays. If you don't know the name just Google him! If this doesn't work out I have Carl Jacobson on stand-by. Carl does a wide spectrum of things and is fun to watch. He has a pretty good YouTube following.

—John

## A LITTLE SOMETHING...



In our club's new logo design, I added a small graphic element that reflects and emphasizes our club's name, "**Northwest** Woodturners."

Can you see it? The image of the compass may give you a hint.

—bk





## TIP OF THE MONTH — JOHN BEECHWOOD

**How efficient is your shop?**

When I built my shop (it is too small) I built it for the equipment I had at the time. Well, that was before I started turning and upgrading a few things! Once I added the lathe it became harder to keep up with the house keeping in the shop. I also was always moving equipment around just to use it!

So in January, I stopped making anything and completely rearranged my shop! It took me over a month but wow, what a difference! I can now use everything where it sits, or maybe a slight movement, and it makes my shop safer and more efficient. Now when I have to build that annoying dresser that takes me away from my lathe, I can do it much faster and get back to turning.

**One thing I did that helps a lot is to add pull-down shades around my lathe!**

The cheap ones that cost about \$10 to \$15 at Home Depot or Lowes. If you have your lathe in your garage this might be something that helps you. I am able to keep the chips in one area and stop from throwing water across the shop with wet wood. And then I just put them up and out of the way.

—John



*A shade in my lathe's "line of fire" catches a line of water.*

## JUNE DEMONSTRATION • REED GRAY

**Basic Bowl Turning**

I'm looking forward to seeing this month's demonstrator, Reed Gray (aka RoboHippy). He is an extremely accomplished woodturner from Eugene. Although he certainly knows his way around bowl gouges and most other tools, he prefers to rough out his bowls with...(gasp)...SCRAPERS!

Reed has also designed and produced an innovative, adjustable grinding platform (Robo Rest), as well as a uniquely shaped tool rest designed specifically for turning the inside of bowls. They are able to be purchased on his [website](#). I have both and use them every time I turn.

And if that's not enough, Reed somehow manages to produce (imho) the best, most informative [series of woodturning videos on Youtube](#). Like the Stuart Batty series of videos that I have

written about in a past newsletter, Reed's videos are an invaluable asset in improving all aspects of your woodturning skills.

Reed will be doing a basic bowl turning demo that will help newer turners just starting on their journey. I have no doubt that the more advanced club members will also learn a thing or two. Or ten.

Make sure you don't miss Reed's demo!

*See you next Thursday, June 6th!*

—bk





## LAST MONTH'S MEETING • JAY SHEPARD DEMO



### Blank to High-gloss Lacquer Hollow-form in 90 Minutes

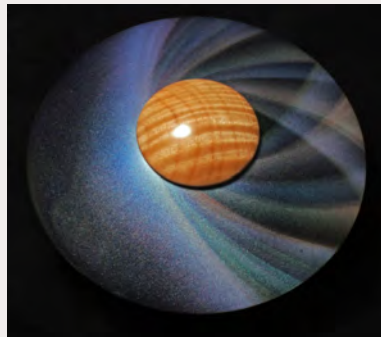
Last month's meeting was a lot of fun and very informative!

At Jay Shepard's demonstration, he turned a hollow form and paid careful attention to sanding and surface preparation for the finish. He showed how quick and easy it was to use a quick wipe-on, water-based lacquer, sand the surface with superfine grit Micro Mesh abrasives, and using the Beall buffing system to create a glass-like finish to the piece.

Roger, Larry, Skip and I went in on ordering a gallon, and I can't wait to try it out! I've included a link below to the Hydrocote website if you are interested in ordering. Also, here is a [link to Jay's handout](#) that describes his finishing process in detail.

Thanks for coming to the demo!

—bk



## JAY'S FINISH



### Jay's Water-based Lacquer Finish:

The water-based lacquer that Jay uses is [Hydrocote Resistane Plus, Gloss Finish](#), from Hood Finishing Products: It is their water-based lacquer. Thin the lacquer 50/50 with denatured alcohol. Once you mix it, keep the container sealed. Alcohol evaporates quickly.

## TRUE GRIT • SANDPAPER GRADING

Microns	ANSI or CAMI	FEPA	Micron
size of grit	(USA)	(Europe)	USA
	<b>3M, Norton, Gator</b>	<b>Klingspor, Mirka, Abranet Indasa</b>	<b>Micro Mesh</b>
2.0			<b>12000</b>
3.0			<b>8000</b>
4.0			<b>6000</b>
5.0	<b>1500</b>		<b>4000</b>
6.0			
6.5			<b>3200</b>
9.0			
9.5	<b>1000</b>		
12			
12.2		<b>P1500</b>	<b>2400</b>
15			
16	<b>600</b>		<b>1800</b>
18.3		<b>P1000</b>	
22			
23.6	<b>400</b>		<b>1500</b>
25			
28.8		<b>P600</b>	
30			
36	<b>320</b>	<b>P400</b>	
40			
44			
45		<b>P320</b>	
50			
53.5	<b>240</b>		
55			
		<b>P240</b>	
60			
66	<b>220</b>	<b>P220</b>	
78	<b>180</b>	<b>P180</b>	
93	<b>150</b>	<b>P150</b>	
116	<b>120</b>	<b>P120</b>	
141	<b>100</b>		
		<b>P100</b>	
192	<b>80</b>	<b>P80</b>	
>192	<b>SHARPEN YOUR TOOLS :)</b>		

If you're like me, you use a lot of different brands of sandpaper in sheets, discs and pads.

The varying sizes of the abrasive grits of most common brands are graded with either CAMI (USA standard) or FEPA (European standard).

The way to tell the difference between the two standards is that all FEPA abrasives (including **Klingspor, Mirka Abranet and Indasa** brands) are indicated by the letter 'P' before the grit numbers.

All CAMI abrasives (including **3M, Norton and Gator** brands) are indicated by only the grit number.

Both types are basically the same up to 220 grit (below the red line on the chart). Then, they vary considerably.

For example, if you're sanding through the grits using 3M or Norton up to **400** and decide you want a finer finish, if you reach for a sheet of Klingspor or Mirka **P600**, you are actually using a coarser grit than the 400 you were previously using!

You don't need to memorize this chart, but having a general understanding of how abrasive standards vary can make your time in the shop more efficient and more enjoyable!

Stay sharp.

—bk



Tip: Clip this chart out and keep it in your shop next to your sandpaper for reference.

## THIS MONTH'S CHALLENGE — HOLLOW FORMS

**There was only one Table Lamp Challenge entry this month**, and it was a beauty. Well done, John Beechwood!

**We did, however, have fourteen pieces in the Show-n-Tell.** Lila Ferber won the Show-n-Tell with her impressively turned, multi-axis cherry Salt Mill. It felt very nice to hold. Good on ya, Lila, and good luck with your new adventure on the East coast!

**The May Challenge, "Hollow forms" is another good one!**

For every monthly meeting, it's our hope that members – whether beginner, intermediate or advanced – will take part in the Monthly Challenge, as well as bring pieces to the Show-n-Tell. It's always fun and informative to see what (and how) our fellow members are turning. And the criticism is always constructive!

## MAY MONTHLY CHALLENGE

• Photography by Jim Schoeffel •



**John Beechwood**  
 Table Lamp  
 Purple Heart & Maple  
 with Spalted Maple top,  
 Spalted Elm base and Myrtle feet  
 3-1/4" dia. x 14-1/2" high (w/o shade)  
 5-1/2" dia. base



## MAY SHOW-N-TELL

• Photography by Jim Schoeffel •



**Lila Ferber**  
Salt Mill, 3-axis with twist  
Cherry/Bullseye Shellac  
3" dia. x 10-1/4" tall



**Terry Tanner**  
Bird's Beak Vase  
Cascara  
4-1/4" dia. x 3-3/4" high



**Sarah Livingston**  
Lidded Box with slip-fit lid  
Cherry/Linseed Oil & Wax  
2-3/4" dia. x 3" high



**Allan Wells**  
Lidded Box  
Myrtle wood with Fleece Lining  
4" dia. X 3" deep, 1" high knob



## MAY SHOW-N-TELL

• Photography by Jim Schoeffel •

**Terry Tanner**

*Toothpick Dispenser  
with Pyrography Decorations  
Northeastern Ash  
3" dia. x 3-3/4" high, 1-1/2" dia. base*

**Terry Tanner**

*Desk Pen Set  
Birch pen, Maple base  
Pen: 8" long x 1/2" dia.  
Base: 2-1/4" dia. x 3" high*

**Terry Tanner**

*Toothpick Dispensers  
Northeastern Ash  
From left in photos:  
3" dia. x 4-1/2" high  
3" dia. x 4" high  
2-3/4" dia. x 4" high  
2-1/2" dia. x 4-1/2" high*

**Bill Karow**

*Practice Bowl  
Cherry, ebonized with  
iron oxide solution, sanded  
9" dia. x 3" high*



# MAY SHOW-N-TELL

• Photography by Jim Schoeffel •



**Bill Karow**  
Bowl  
Walnut/ Walnut oil finish  
5-3/4" dia. x 5" high



**Bill Karow**  
Hollow Form, texture carved  
Madrone/leather dye  
4" dia. x 5-1/4" high



**Bill Karow**  
Platter with carved rim  
Red Oak, ebonized with iron oxide solution  
11-1/4" dia. x 3" high



**Bill Karow**  
Platter  
Red Oak/fumed with ammonia  
9-1/2" dia. x 1-1/4" high

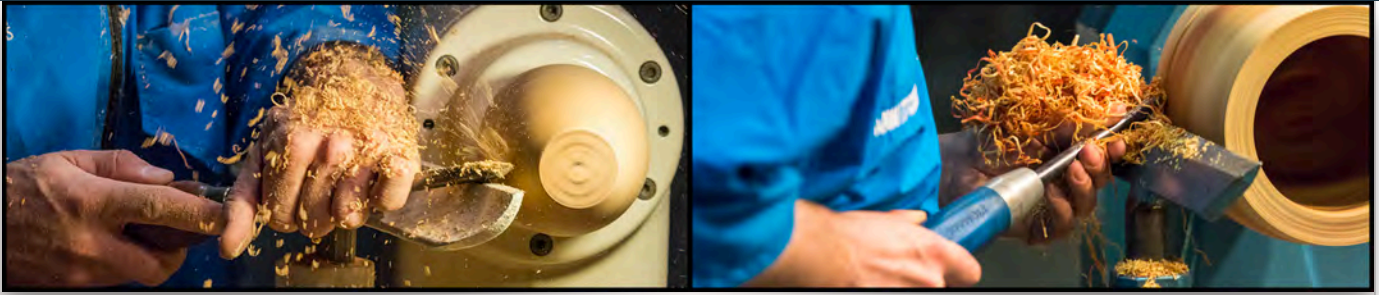
**Bill Karow**  
Bowl  
Red Oak/fumed with ammonia  
10-5/8" dia. x 3-1/4" high

**Bill Karow**  
Platter  
Red Oak/fumed with ammonia  
12" dia. x 2-3/8" high





## AAW — COMPLIMENTARY GUEST MEMBERSHIP



By signing up for a [Complimentary Guest Membership](#), you can have limited access to a sampling of AAW resources for a full 60 days. You'll be able to explore what the AAW has to offer, kick our tires, and hopefully decide to become a full-fledged, paid AAW member to benefit from everything the AAW has to offer. Click [here](#) to view/download a list of publications and services available to full/paid AAW members.

**AAW** | AMERICAN ASSOCIATION  
OF WOODTURNERS

## NWWT STORE — UPDATE



**Restock:** We have restocked the store with Klingspor 2" and 3" sanding discs and the Mirka sanding pads.

Remember the Mirka pads can be used wet or dry and work great on flat work.

Also remember, as a NWWT member, you get a 10% discount on many Klingspor items. To see your discount, you must log into the website, [woodworkingshop.com](http://woodworkingshop.com).

**New Items:** Whenever I place a new order, I look for things that might be of interest to members and that I use all the time. I ordered 5 of these (right). \$10 each. If these sell quickly, I will order more.

New **2" & 3" H&L Disc, Bone Shaped Hand Pad** is a handy accessory for anyone who uses sanding discs. It is great for hand sanding and works for any hook & loop paper including Abranet that I cut into small strips or squares. \$10 each.

Also, **Michael Hosaluk's Carbide Burnishers** (\$10) are in stock. Great for forming a continuous, sharp-edged, wire "hook" on all your scrapers.

—Roger



## JUNE'S TURNING TEASER — QUESTION



Each month, if space allows (and we don't run out of material), we'll show you a photo and ask a question or two about it.

We'll let you think about it for a month, then give you our thoughts in the next newsletter.

### **June's Question:**

***Sizing to a larger diameter with a parting tool? SOP, right?***

***At what point in the parting cut should this photograph have been taken, beginning or end? Why?***

*(Answer in the July newsletter.)*

—Tom Willing

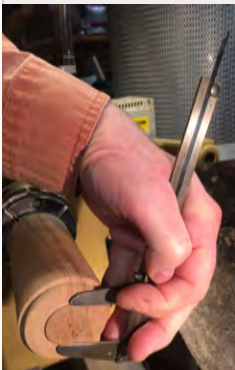


## MAY'S TURNING TEASER — ANSWER



*(above) Grip is too soft.*

*(below) Keep a firm grip!*



***How we handle our tools has a direct effect on our success with the cut, regardless of whether it goes right or wrong?***

***What might be a bad idea about this grip on these calipers?***

**Answer:** We are often warned against the “death grip” when handling our tools. This is one case where firm is a good idea in my view.

Too dainty a grip on a Vernier caliper when cutting down to a set diameter using a parting tool increases the possibility of complete loss of grip in the event of a catch.

Result? Your lathe (now turned launcher) sends your caliper spinning off about the airspace in your shop looking for a target, which is likely to be you as parting operations usually place you very close to the line of fire.

**Use a grip that “muzzles” the caliper and allows you to hang on to it if you do have a catch.**



*Think you might have a good submission? Send us a photo and we'll try to include it in a future newsletter.*

## A MESSAGE FROM NORTH WOODS FIGURED WOOD



Hello friends, this message is not our normal greeting but an important one. We have decided to restructure North Woods from a retail business to a wholesale one.

This means we will be shutting down retail sales and scaling back to offer only whole burls and milling. This was not an easy decision, but it makes the most sense as Les and Susan are planning to retire, relocate, and focus on the adventure that will bring.

With that said, as of May 1st, we will be discounting everything to liquidate our inventory online. The sale will go until June 5th (may be extended) and then the website will be closed for restructure.

We will have a 1 day only sale at the warehouse on June 22nd from 9am to 5pm to liquidate everything remaining including slabs. Please join us if you are in the area, 56752 SW Sain Creek Rd Gaston OR 97119.

Thank you from the bottom of our hearts for your support, friendship, and business. We have truly enjoyed this adventure, now it's time to move on to the next one.

Les and Susan – Owners

Joslyn – Office Manager

Carol – Inventory Manager

Check their website for more information: [North Woods Figured Woods](http://NorthWoodsFiguredWoods.com)

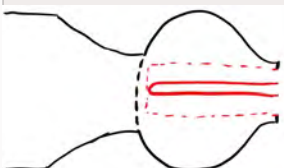


## TURNING SMALL HOLLOW FORMS — MOLLY WINTON

I recently read an article that was written by [Molly Winton](#) in the June 2017 *Women In Turning* newsletter. The title was "Turning Hollow Forms: We'll Start With Miniatures." And I thought it would be a great article to share for those of us who want to try turning hollow forms.

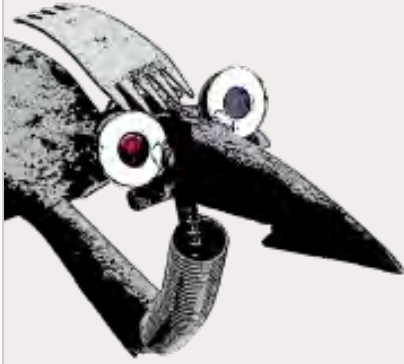
Molly believes that "learning to turn hollow forms by starting with small vessels reduces many potential anxieties that can interfere with the learning process."

The article is very clear and informative and has many detailed illustrations and photographs. You can [download the article here](#).





## JUNE 29-30 • RECYCLED ARTS FESTIVAL



# CLARK COUNTY Recycled Arts Festival

**14TH ANNUAL  
RECYCLED ARTS FESTIVAL  
JUNE 29TH AND 30TH**

**Saturday, June 29 — 9:00am–5:00pm  
Sunday, June 30 — 9:00am–4:00pm  
FREE ADMISSION!**

**ESTHER SHORT PARK**  
301 W 8th Street  
Vancouver, Washington 98660 [\[map\]](#)

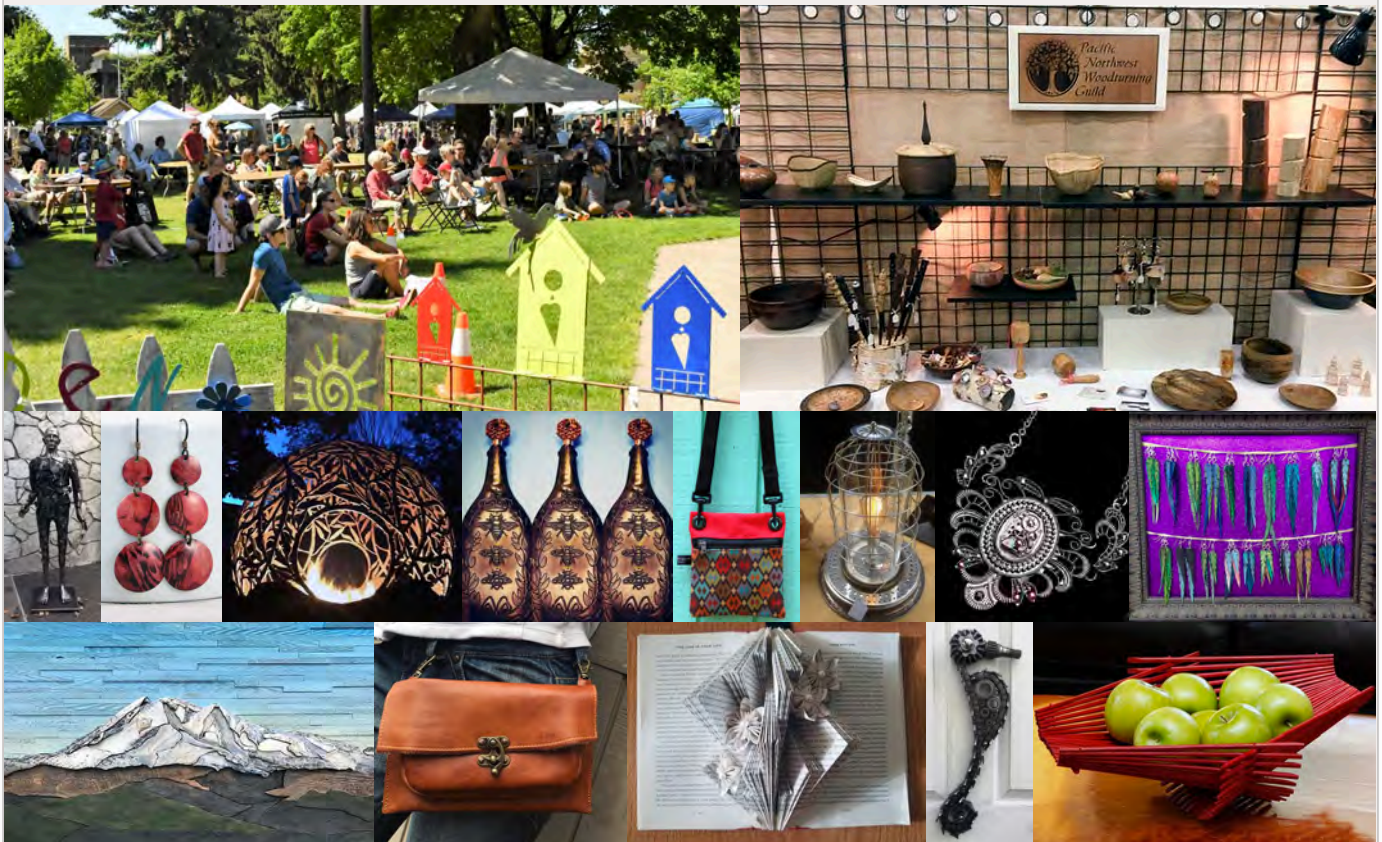
The [Recycled Arts Festival](#) started in 2005 as a way to educate and get the community excited about waste reduction, reuse and recycling in Clark County. It has grown into a huge family event, with more and more artists participating every year.

The [Pacific Northwest Woodturning Guild](#) will be there again this year and would love for you to come by and say hi! There will also be a lot of beautiful wood turned pieces available for purchase.

Come on out and peruse the artists' wares, help your kids make their own handiwork, relax and listen to music, and get all sorts of info on what you can do to improve the environment!

There's an amazing lineup of local bands on the Main Stage this year. The fun starts at 9:00 am on both Saturday and Sunday so bring your dancing shoes! Make recycled instruments and arts & crafts! Be amazed and entertained by our juggler, stilt-walker and clown! Make sure to check out all our Family Fun activities.

It promises to be an awesome weekend to view, be inspired by and participate in creativity in craft. And admission is free! Check out the [Recycled Arts Festival website](#) for additional details.





## DALE LARSON • OPEN SHOP



For about the last 10 years, Howard Borer and I have hosted Open Shop Saturday in my shop in Gresham. The idea behind Open Shop is to help new turners with projects and ideas.

We have a good group of experienced turners who help new turners mount the wood on the lathe and learn how to sharpen and present their tools to the wood.

I like to say: *We have no standards, everyone is welcome.*

**When:** Generally the last Saturday of the month from 9am to noon.

**Where:** Dale's shop at [5010 SE Regner Rd, Gresham](#). (503) 661-7793

**NOTE:** There will not be an Open Shop in either June or July.

—Dale





## JUNE 8 • R. E. VAUGHN WOODTURNING SCHOOL

SOUTHWEST WASHINGTON WOODTURNERS

**R.E.VAUGHN WOODTURNING SCHOOL**

1600 WEST 20TH STREET • VANCOUVER, WA 98660

**Saturday, June 8  
SPINDLE TURNING BASICS**Lead Instructor: **Rick Rich**

\$100 includes all blanks.

This one day basic spindle turning class focuses on turning several 'skew' exercises and two fun, easy to replicate projects – a stick pen and tool handle w/ ferrule. The class covers mounting the blanks, proper tool control for basic cuts and turning several exercises and projects over the day.

Class is limited to 8 participants. Pre-registration required, contact Brian Harte at [blharte@gmail.com](mailto:blharte@gmail.com) or call 360-606-7272 to register.

Payment is required at the start of class. Make checks payable to the SWWW. If there are fewer than four registrants, the class may be cancelled. Class starts at 8:30 and concludes at 3:30. Lunch, snacks, blanks and face shields provided.

Bring your own bowl gouges if you have them. Four sets of tools are available for use, please let Brian know when registering if you will need them.

## JUNE 28 • R. E. VAUGHN WOODTURNING SCHOOL

SOUTHWEST WASHINGTON WOODTURNERS

**R.E.VAUGHN WOODTURNING SCHOOL**

1600 WEST 20TH STREET • VANCOUVER, WA 98660

**Friday, June 28  
TURN A NATURAL EDGE FORM**Lead Instructor: **Dan Tilden**

\$135 includes a burl blank

This one day class focuses on turning a natural edge burl blank to create a piece of art. The class covers turning a basic bowl from a blank, proper tool control for basic cuts.

Class is limited to 8 participants. Pre-registration required, contact Brian Harte at [blharte@gmail.com](mailto:blharte@gmail.com) or call 360-606-7272 to register.

Payment is required at the start of class. Make checks payable to the SWWW. If there are fewer than four registrants, the class may be cancelled. Class starts at 8:30 and concludes at 3:30. Lunch, snacks, blanks and face shields provided.

Bring your own bowl gouges if you have them. Four sets of tools are available for use, please let Brian know when registering if you will need them.



## JULY 27 • R. E. VAUGHN WOODTURNING SCHOOL

SOUTHWEST WASHINGTON WOODTURNERS

## R.E.VAUGHN WOODTURNING SCHOOL

1600 WEST 20TH STREET • VANCOUVER, WA 98660



Saturday, July 27

## SPIRAL TOOL USE ON SPINDLES &amp; BOWLS

Lead Instructor: **John Beechwood**

\$100

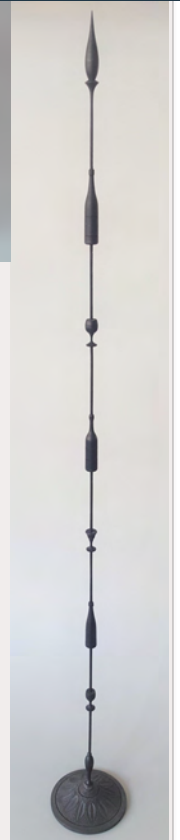
This one day class focuses on turning a spindle and bowl and then using a spiral cutting tool to create a piece of art. The class covers turning a basic spindle and bowl from blanks, proper tool control for basic cuts and proper use of a spiral tool. Bring your own turning tools if you have them.

Class is limited to 8 participants. Pre-registration required, contact Brian Harte at [blharte@gmail.com](mailto:blharte@gmail.com) or call 360-606-7272 to register.

Payment is required at the start of class. Make checks payable to the SWWWT. If there are fewer than four registrants, the class may be cancelled. Class starts at 8:30 and concludes at 3:30. Lunch, snacks, blanks and face shields provided.

Bring your own bowl gouges if you have them. Four sets of tools are available for use, please let Brian know when registering if you will need them.

## AUGUST 5-8 • ELI AVISERA IS COMING TO PORTLAND



**Eli Avisera's hands-on classes are FULL at this time, BUT...**

You can contact Dale at 503-661-7793 or at [woodbowl@frontier.com](mailto:woodbowl@frontier.com) to put your name on the list if someone has to drop out at the last minute.

Eli will be teaching two 2-day classes Aug 5-6 and 7-8 at [Dale's shop](#). Because of Eli's travel schedule, we were limited to these days. Classes will be limited to eight students each. The cost will be \$225 for each 2-day class.

Eli is one of the best demonstrators and teachers in the world. He travels all over the world teaching woodturning. It has been seven years since we had Eli here in Portland.

Attached are a few pictures of his work and there are many more on the internet. This is a chance to spend two days with one of the top woodturners in the world.

—Dale

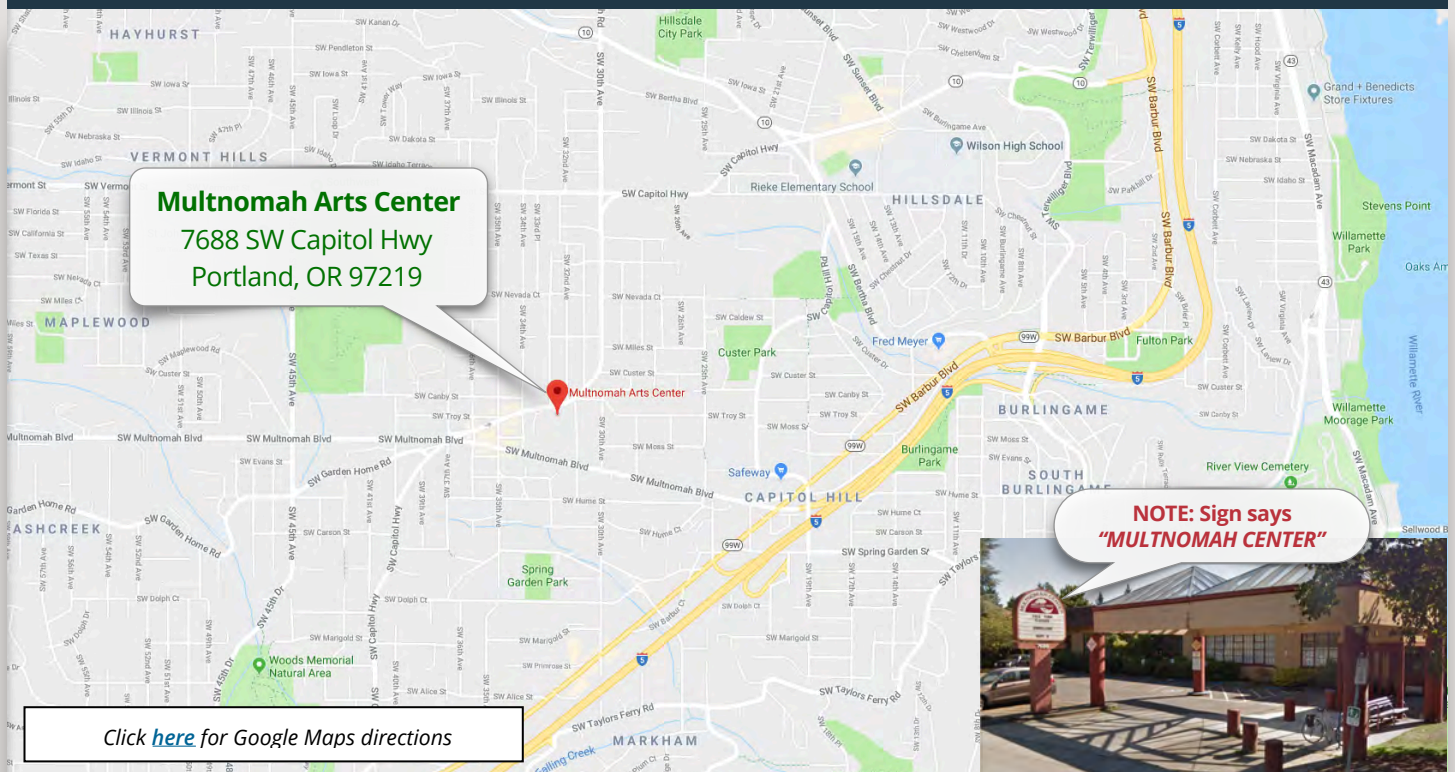
## 2019 NWWT MEETING SCHEDULE &amp; PROGRAMS

# NORTHWEST WOODTURNERS

**1st Thursday of each month at 7:00 PM in the Main Auditorium**  
The Multnomah Arts Center, 7688 SW Capitol Hwy, Portland, OR 97219

DATE	PROGRAM	CHALLENGE
Thursday, January 3	Annual Tool Swap Meet	"Rescued" (Repaired) Turnings
Thursday, February 7	Dale Larson – "Picking the Best Part of the Tree"	New-Tool Turnings
Thursday, March 7	Bill Karow – "Bird's Beak Vases"	Naturally Figured Pieces
Thursday, April 4	Rick Rich – "Table Lamp"	Bird's Mouth Bowls
Thursday, May 2	Jay Shepard – "Finishing"	Turn a Table Lamp
<b>Thursday, June 6</b>	<b>Reed Gray (aka RoboHippy) – "Bowl Turning"</b>	<b>Hollow Form</b>
Thursday, July 4	No Meeting	None
Saturday, August 3	Picnic and Wood Auction	None
Thursday, September 5	TBD	TBD
Thursday, October 3	TBD	TBD
Thursday, November 7	Elections	Holiday Pieces / Ornaments
December	No Meeting	Happy Holidays!

## MAP TO THE MULTNOMAH ARTS CENTER



Click [here](#) for Google Maps directions

## OTHER WOODTURNING CLUBS • MEETINGS &amp; PROGRAMS

**One meeting every month not enough?***Check out what other clubs around our area are doing!**(Please click on the clubs' website links to verify the information presented below.)***WOODTURNERS OF OLYMPIA**[woodturnersofolympia.org](http://woodturnersofolympia.org)**2nd TUESDAY of every month @ 6:30 PM**First Baptist Church of Olympia  
904 Washington St. SE, Olympia, WA 98507 [\[map\]](#)**June 11, 2019: TBD****CASCADE WOODTURNERS**[cascadewoodturners.com](http://cascadewoodturners.com)**3rd THURSDAY of every month @ 6:30 PM**Willamette Carpenters Training Center  
4222 NE 158th Ave, Portland, OR 97230 [\[map\]](#)**June 20, 2019: Laurent Niclot****PACIFIC NORTHWEST WOODTURNING GUILD**[woodturningguild.com](http://woodturningguild.com)**2nd Wednesday of every month @ 7 PM**MWA Architects  
70 NW Couch St. Portland, OR [\[map\]](#)**June 12, 2019:**  
*Everyone is welcome!***SW WASHINGTON WOODTURNERS**[southwestwashingtonwoodturners.com](http://southwestwashingtonwoodturners.com)**4th WEDNESDAY of every month @ 7:00 PM**Friends of the Carpenter's Center  
1600 W 20th St, Vancouver, WA 98660 [\[map\]](#)**June 27, 2019: Dan Tilden**  
*Natural Edge Hollow Form***WILLAMETTE VALLEY WOODTURNERS**[willamettevalleywoodturners.com](http://willamettevalleywoodturners.com)**2nd THURSDAY of every month @ 6:30 PM**Center 50+ Senior Center  
2615 Portland Rd, NE Salem, OR 97303 [\[map\]](#)**June 13, 2019: TBD****BEAVER STATE WOODTURNERS**[beaverstatewoodturners.com](http://beaverstatewoodturners.com)**4th THURSDAY of every month @ 6:00 PM**Coburg Community Charter School  
91274 N Coburg Rd, Coburg, OR 97408 [\[map\]](#)**June 27, 2019: TBD**



## 2019 NATIONAL & REGIONAL SYMPOSIA

July 11-14, 2019

[AAW 33rd International Woodturning Symposium](#)

Raleigh, NC

August 23-25, 2019

[28th Annual S.W.A.T. \(Southwest Association of Turners\) Symposium](#)

Waco, TX

September 13-15, 2019

[Rocky Mountain Woodturning Symposium](#)

Loveland, CO

September 20-22, 2019

[Turning Southern Style Symposium](#)

Dalton, GA

October 17-20, 2019

[Turning 2019 at Ohio Valley Woodturners Guild](#)

West Harrison, IN

June 4-7, 2020

[AAW 34th International Woodturning Symposium](#)

Louisville, KY

## AAW 33RD ANNUAL INTERNATIONAL SYMPOSIUM



**Raleigh 2019**

**AAW** | AMERICAN ASSOCIATION  
OF WOODTURNERS



### Raleigh, NC • July 11-14, 2019

The conference will bring together more than more than 1,200 turners from around the globe to learn, share, and celebrate the art and craft of woodturning making it the largest woodturning event in the world. No other event offers as many opportunities to learn from the world's best.

For registered attendees, the symposium features classroom-style educational demonstrations and panel discussions led by internationally known woodturners and top woodturning talent. Sessions appeal to a wide variety of skill levels and interest areas. Additionally, many events are open to the public, including an enormous trade show jam-packed with the newest woodturning products, tool and lathe manufacturers, and supplies; an Instant Gallery and themed exhibitions; as well as benefit auctions and opportunities to support local charities.

Visit the [AAW website](#) for more information. It's not too late to register!

## LOCAL WOODWORKING STORES' FREE DEMOS

Many other fine classes and demonstrations are available from our local stores.

Date	Free Demo	Day	Time	Location
06/01/19	Woodturning Techniques	Sat	11am	Rockler, Beaverton
06/01/19	Choosing Right Clamp For The Job	Sat	1-2pm	Woodcraft, Tigard
06/01/19	Skip Burke: Woodturner	Sat	10am-3pm	Woodcrafters, Portland
06/08/19	Hand Plane Tune Up	Sat	1-2pm	Woodcraft, Tigard
06/08/19	Shirley Malar: Pyrography	Sat	10am-3pm	Woodcrafters, Portland
06/15/19	Bandsaw Techniques	Sat	11am	Rockler, Beaverton
06/15/19	Hand Carving	Sat	1-2pm	Woodcraft, Tigard
06/15/19	Jim Tharp: Woodcarver	Sat	10am-3pm	Woodcrafters, Portland
06/22/19	Box Making Techniques	Sat	11am	Rockler, Beaverton
06/22/19	Resaw On Bandsaw	Sat	1-2pm	Woodcraft, Tigard
06/22/19	Mercedes McCreight: Pyrography/Sculpture	Sat	10am-3pm	Woodcrafters, Portland
06/29/19	Spray Finishing Techniques	Sat	11am	Rockler, Beaverton
06/29/19	Cutting Finger Joints	Sat	1-2pm	Woodcraft, Tigard
06/29/19	Sharon & Ramos: Woodcarving/Pyrography	Sat	10am-3pm	Woodcrafters, Portland
07/06/19	Laguna Premium Power Tools	Sat	11am	Rockler, Beaverton
07/06/19	Wood Veneer	Sat	1-2pm	Woodcraft, Tigard
07/06/19	Skip Burke: Woodturner	Sat	10am-3pm	Woodcrafters, Portland
07/13/19	Router Table Techniques	Sat	11am	Rockler, Beaverton
07/13/19	Mercedes McCreight: Pyrography/Sculpture	Sat	10am-3pm	Woodcrafters, Portland
07/20/19	Cabinet Hardware 101	Sat	11am	Rockler, Beaverton
07/20/19	Jim Tharp: Woodcarver	Sat	10am-3pm	Woodcrafters, Portland

*Please visit the store websites to verify the information presented above.*

**Rockler**, Beaverton

(503) 672-7266

[rockler.com](http://rockler.com)

**Woodcraft**, Tigard

(503) 684-1428

[woodcraft.com](http://woodcraft.com)

**Woodcrafters**, Portland

(503) 231-0226

[woodcrafters.us](http://woodcrafters.us)



## OUR BUSINESS PARTNERS

*Northwest Woodturners encourages our members to visit these business partners to find the many great products they carry and to stock up on the necessary items for your wood turning needs.*

*Be sure to remind the sales clerk that you are a member of Northwest Woodturners! Our business partners provide NWWT with generous gifts based on member purchases.*



Create with Confidence™

**10% off non-sale items for club members**  
(excludes power tools, Leigh and Porter-Cable dovetail jigs, CNC Shark)

11773 SW Beaverton-Hillsdale Hwy, Beaverton, OR 97005  
(503)672-7266 store17@rockler.com

Delta, JET, and Powermatic lathes, turning tools, turning stock, turning kits, abrasives, finishes, plus a whole lot more!

**WOODCRAFT®**  
Helping You Make Wood Work®

### Hours

Sunday 9am-5pm • Monday 9am-7pm • Tuesday 9am-7pm  
Wednesday 9am-7pm • Thursday 9am-9pm • Friday 9am-7pm  
Saturday 9am-6pm

Independently Owned  
& Operated Franchise  
12020 SW Main Street  
Tigard, OR 97223

Phone: (503) 684-1428  
Toll Free: (866) 684-1428  
Fax: (888) 312-9663  
woodcraft312@woodcraftportland.com

**Here's a suggestion:** After you've purchased an item from one of our business partners who gave you a discount because you are a member of NWWT, take a moment and contact them via their website or an e-mail and thank them for supporting NWWT.

## BULLETIN BOARD

**LATHE FOR SALE...**

It belonged to my son who now lives in Texas. **Jet Mini Lathe JML-1014 with the chuck included.** It has been stored in a dry place, coated with Vaseline to protect and covered. I'll clean and polish as soon as it is listed. It has not been used very much. The manual and two turning books are also included.

If interested, please email me at [tsitra.m@gmail.com](mailto:tsitra.m@gmail.com)

–Marilyn Joyce

**AND... ANOTHER LATHE FOR SALE:**

This new Oneway 2436 is for sale. It is in Yachats. The lathe is serial #1220. Built in December of 2001. 3hp motor and outboard attachment.

The owner bought it new and then never used it. It has been in a heated shop the whole time. Asking \$6000.

Contact Gary Meier

[gjmwoodturnings@gmail.com](mailto:gjmwoodturnings@gmail.com)

Mobile/Text 772-332-1440

Home Phone 458-546-9042

If you have woodturning tools for sale,  
know of a tree being taken down in the near future,  
a new source for woodturning stock,  
upcoming estate sales,  
need help  
or have questions that need answering...

[let me know](#) and I will post it on the Bulletin Board section of next month's NWWT newsletter.



## EDITOR'S NOTES

Past newsletters can be accessed from the NWWT website [here](#).

If you don't have internet access, provide me with your mailing address, and I will print out a copy, lick a stamp and mail a copy of the newsletter to you via U.S. Postal Service.

If you do not receive a courtesy email from me by the beginning of the month indicating that a new newsletter is available online, please send me your current email address.

**Submissions to the newsletter are due by the last Thursday of the month.**

Articles, tips, web links, classified ads and other woodturning-related items are welcome! Send them to [me](#).

For other business inquiries, contact Northwest Woodturners at:

Northwest Woodturners  
P.O. Box 1157  
Lake Oswego, OR 97035

### ***NWWT membership has benefits!***

Show your NWWT Membership Card to receive a discount off your purchase at Gilmer Wood, Rockler, Woodcraft, Woodcrafters, North Woods Figured Wood, and Crosscut Hardwoods.

