

NORTHWEST WOODTURNERS

Founded 1995

Pacific Northwest Oregon Chapter of The American Association of Woodturning

AAW | AMERICAN ASSOCIATION
OF WOODTURNERS

PRESIDENT'S MESSAGE — MIKE MEREDITH



Another year is slipping away. As I get older, time passes so much faster. When you are ten years old, a year is 10 percent of your life. At my age, it is a significantly smaller fraction.

2019 was a good year. We got through another very successful Oregon Woodturning Symposium. If you've not heard, Richard Raffan had such a good time, he agreed to come back in 2021.

NWWT added a large number of new members. We had a year's worth of successful demonstrations and classes. We bought a new club lathe, which will be very nice. We entered the community sphere with the Multnomah Days booth and the Veteran's pen classes at Rockler's. It was a busy year of great activities and growth for the club. Many thanks to all those who made it happen.

It has been a pleasure to serve as president again, but in truth, I am looking forward to letting Roger take over. He does most of the heavy lifting for the club anyway, so he probably should be president. I'm sure he will do a great job, as he always does. I'm looking forward to preparing very brief Treasurer's reports. Since I know I will miss at least two meetings, something easily submitted by email seems like a good idea. We have new officers and board members beginning terms of service in January. Again, I have no doubt the club's affairs are in capable hands.

Don't forget, **the January meeting is the Annual Tool Swap**, the event where all members gather to exchange tools and other stuff they don't want, for tools others don't want. New turners, this is an excellent chance to find good, usable tools and other bits of shop equipment to fill the first tool bucket. You never know what will show up on the tables. Soon you, too, will be on the other side of the process, clearing space to add new tools. I'm pretty sure there is a twelve-step process for our addiction.

Enjoy the holiday season and try to get out to the shop to make some chips.

See you in January.

—Mike

CLUB INFO

NORTHWEST WOODTURNERS www.northwestwoodturners.com

Meetings are held at 7pm on the 1st Thursday of each month at:

The Multnomah Arts Center
7688 SW Capitol Hwy
Portland, OR 97219 [\[map\]](#)

President

[Mike Meredith](#)

Vice President

[John Beechwood](#)

Secretary

[Larry Klick](#)

Treasurer

[Roger Crooks](#)

Directors

Steve Newberry Lynne Hemmert
Mike Meredith Richard Hall
Barb Hall Jim Schoeffel

STAFF VOLUNTEERS

Monthly Raffle

Jackie Yi Kim Talley

Library

Lynne Hemmert

Photographer

Jim Schoeffel

Website

Roger Crooks

Demo Coordinator

Bill Giffin

Storekeeper

John Sutter

A/V Backup

Helen Brown

Newsletter Editor

[Bill Karow](#)
(503) 490-0325

2020 NWWT BOARD OF DIRECTORS

Each November, NWWT (and many other clubs) face the Herculean task of selecting a new board of directors. Often you see the same names year after year but we have been fortunate in having new people step up to help run the club and taking on new positions.

Last year, we had two new people join the board – **Larry Klick** and John Beechwood. Larry is staying on for year two, John was elected to the AAW Board of Directors, where he will, no doubt, do us proud. **Mike Meridith** who has been President on and off throughout the years and **Roger Crooks**, long-time Treasurer agreed to swap positions. New to the board this year is **Kevin White** as Vice President, who we are all confident will do a fantastic job. The VP position is responsible for setting up our monthly demonstrations, so any ideas anyone has that they would like to see, let Kevin know. Also, **Dave Wood** and **Sarah Livingstone** have offered to help our club as new board members for 2020. New blood is critical in running any organization.

There are four other members on the board:

Jim Schoeffel – Also serves as Chief Photographer – takes average turnings and makes them look gallery-ready (at least for mine)

Richard/Barb Hall – Brings a long history of the club

Steve Newberry – Past President and great mentor

In addition to the above board members, we have a dedicated staff who make the club run smoothly:

John Sutter – Company Store Manager

Bill Karow – Our award-winning™ Newsletter Editor

Lynn Hemmert & Alex McDowell – Manage one of the best libraries around

Jacki Yi – Monthly Raffle Coordinator (Nobody can resist buying tickets from Jacki!)

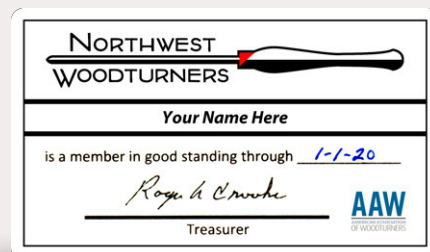
Roger Crooks – Webmaster

Many thanks to all who make NWWT the great club that it is today,

—Roger

NWWT MEMBERSHIP CARDS

Please don't forget to renew your Northwest Woodturners club membership!



As always, [paying on-line](#) is the easiest for me and less error-prone, but we appreciate your money any way you want to pay. Just a reminder, several years ago we moved our membership plan from an annual plan (Jan-Dec) to an anniversary plan (12 months from when you join). You get a renewal message a month before your membership expires, so wait until you get your renewal notice to pay. Also, **don't forget to [renew your AAW membership](#)**, which is an annual plan, so join or renew now!

—Roger

NWWT JOINS WITH ROCKLER AND AAW FOR PEN CLASS RECOGNIZING VETERANS



On Saturday, Nov 9, NWWT volunteers taught four 2-hour sessions at the Rockler Store in Beaverton. This is the second time this year that NWWT has been involved with an AAW sponsored event with Rockler. Rockler had a lathe for the demonstrator and four lathes for students. Students received a pen kit (two choices) with the brass tubes glued in and their choice of using carbide tools or traditional gouges.

All the sessions were mostly filled with students from a teenager to those in their 60s and reports from the other instructors indicated everyone walked away with a pen with no blood on the floor.

In my session with 3 students, all picked the carbide tools (with a strong suggestion). There are three ways to present the tool to the wood, top side up, top side down and top side on the edge. When I had them line up the tool rest on the center line, I saw each option. It is a good reminder that when teaching a beginner, that the obvious is not always obvious. Once shown the right way, all students did a great job and walked away with a well-done pen. The pride as they held their first pens was palpable.



Mark McNamara commented "It was also a valuable learning experience for me. Growing up in the 80s, I have a picture of a veteran in my mind who is an older Vietnam vet. I was reminded at this event of just how narrow a view that was. Veterans look like my coworkers and my neighbors. Essentially, veterans look like me...only with more muscle tone and self-assuredness."

I know we have at least two new members who joined after the class, and the rest expressed a high interest, probably for the 10% Rockler discount 😊. The biggest question was how they could get more training. We explained about the other two local clubs for the Eastside and Vancouver, and the MAC classes.

Many thanks to Jim Titus, Mike Meredith, Mark McNamara (*two sessions*), Alex McDowell and Stan Tipton for their efforts.

—Roger



AAW — DISCOVER ALL THE MEMBERSHIP BENEFITS



Take a look at the American Association of Woodturners website. It is full of information and now you can join for free for 60 days!

Click [here](https://www.aaawoodturners.org/) to get started!

THE WILLAMETTE STONE - A COMMUNITY PROJECT



Figure 1: Raw Burl from Northwest Figured Woods

If you have a background in surveying, you may know about The Willamette Stone, if not, join the rest of us. The Willamette Stone is the reference point for all those strange numbers on a survey. It so happens to be 2 miles from my house on Skyline near the Barnes Road intersection, and it is a [State Park](#). Here is [a piece on the actual monument](#) by KOIN TV.

So, what does this have to do with woodturning? Well, not much. However, here is the story (short version):

From Woodcrafters to Northwest Figured Woods to Mike Meredith, NWWT was contacted. The request was to take a burl from NFWF (Figure 1.) and fit a 10 pound metal monument (Figure 2.) into it.

The organization that cares for the Willamette Stone (yes, there is one) auctions this off each year to raise funds. The fellow who was driving the project heard about us via all of the above

contacts, and Mike sent the request out to a few people he thought might be crazy enough to take it on.

Not something to chuck on a lathe, I got my carving tools out and opened up the top to fit the monument. The problem, once it fit nicely was to secure it. The burl was mostly rotten inside and the space was very open, so a mechanical fastening was not feasible. The final solution was lots of epoxy – the challenge was to figure out the contact points, apply the epoxy and keep it from showing.



Figure 2: 10-pound monument test fit

The most time was spent dealing with the burl. A long crack was filled with thin CA glue. The outside was cleaned with a stiff brush and an air compressor. Once it was clean, I put on over 10 coats of shellac, starting with brushing it on until it stopped soaking in, then finished with multiple coats of spray shellac to build a sheen.

Bottom line – it was a fun project, very different from anything else I've done and went for a good cause.

—Roger



Figure 3: Final product (front)



Figure 4: Final product (back)

NOVEMBER MEETING — CARL JACOBSON (REVIEW)

Last month, YouTube channeler and fellow Oregonian, Carl Jacobson, visited Northwest Woodturners to demonstrate how to turn wood using carbide cutting and scraping tools.

I was not able to attend the meeting, but fortunately, both Mike Meredith and Roger Crooks took photos. (Thanks, Mike and Roger!) I've captioned the photos as best I could.



Carl instructs NWWT club members on the use of carbide turning tools.



Club members watching Carl's demonstration.



Carl hollows out a piece of wood.



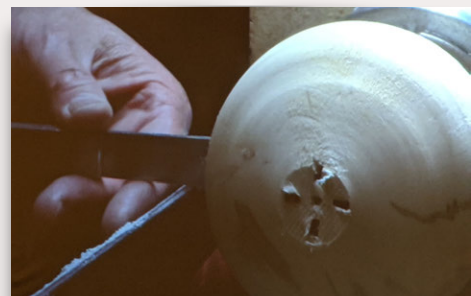
*This image is only 31Kb in size.
But it's another picture of Carl.*



Carl makes the chips fly! (pictured with \$536 worth of Easy Wood Tools in the foreground)



Carl gives NWWT club members two thumbs up!



*This is a picture of Carl using a parting tool.
I can't tell if it's carbide, but it probably is.*

NOVEMBER CHALLENGE — ORNAMENTS

• Photography by Jim Schoeffel •



Bill Giffin
Birdhouse Ornament
3" dia. x 5" tall

WINNER!



Bill Giffin
Ornaments
2" dia. x 7" tall
2" dia. x 3-1/2" tall
2-1/2" dia. x 7-1/4" tall
3" dia. x 4-1/2" tall



Bill Giffin
Ornaments
2-3/4" dia. x 8-1/2" tall
2-1/2" dia. x 5" tall



Bill Giffin
Birdhouse Ornament
3" dia. x 5" tall

Bill Giffin
Birdhouse Ornament
4-1/2" dia. x 9" tall



NOVEMBER CHALLENGE — ORNAMENTS

• Photography by Jim Schoeffel •



Bill Giffin
Ornaments
2-1/2" dia. x 7" tall
2-1/2" dia. x 3-3/4" tall



Bill Giffin
Holiday Decorations
3-3/4" dia. x 4" tall
2" dia. x 5" tall



Bill Giffin
Holiday Decorations
2-1/4" dia. x 6" tall
1-1/2" dia. x 4-1/2" tall



Bill Giffin
Holiday Decorations
2-1/4" dia. x 4-3/8" tall
1-3/4" dia. x 5-1/4" tall
3" dia. x 7-1/2" tall
3" dia. x 7-1/4" tall

NOVEMBER CHALLENGE — ORNAMENTS

• Photography by Jim Schoeffel •



Jim Schoeffel

Birdhouse Ornament with Stand
Congo Teak with Wenge roof;
Stand base is Coffeewood
Ornament: 1-1/2" dia x 2-5/8" tall
Stand: 8-1/2" tall, 3" dia. base



Larry Klick

Ornament with Stand
Oak & Maple, dyed finish
2" dia. x 7" tall
4-1/2" dia. base



Allan Wells

Nine Inside Out Ornaments

Mixed woods

Sizes range from 1" to 1-1/4" dia. x 1-3/4" to 2" tall

NOVEMBER CHALLENGE — ORNAMENTS

• Photography by Jim Schoeffel •



Larry Klick

Two Ornaments

Left: Maple, Walnut & Metallic Acrylics

Right: Cherry, Walnut & Metallic Acrylics

Lacquer finishes

Left: 2-3/4" dia. x 7-3/4" tall

Right: 3" dia. x 7" tall



Larry Klick

Ornament

Oak, Padauk & Metallic Acrylic

2-1/2" dia. x 5-1/2" tall

Larry Klick

Two Ornaments

Left: Cherry, Walnut & Acrylic

Right: Cherry & Walnut

Lacquer finishes

Left: 3" dia. x 5-3/4" tall

Right: 2-1/2" dia. x 5-1/2" tall



Larry Klick

Bowl from blown-up ornament

Cherry

2-7/8" dia. x 2-1/8" high

NOVEMBER CHALLENGE — ORNAMENTS

• Photography by Jim Schoeffel •



Larry Klick

Two Snowmen
Cedar fence boards, Wenge &
Swarovski crystals
Lacquer finishes
2-1/2" dia. x 7" tall
2-1/2" dia. x 8" tall



Will Smith

Sea Urchin Ornament
Sea urchin shell & mystery wood
Lacquer & glitter finish
2-1/4" dia. x 6" tall



John Drake

Three Segmented Ornaments with Stands
Left: Cherry & Maple
Center: Cherry, Maple & Purple Heart
Right: Purple Heart, Cherry & Maple
Left: 4" dia. x 9-1/2" tall
Center: 2-1/4" dia. x 7-1/2" tall
Right: 2-3/4" dia. x 9" tall

NOVEMBER SHOW-N-TELL

• Photography by Jim Schoeffel •



Gary Raetz
Segmented Bowl
Bubinga, Canary wood, East Indian
Rosewood, Maple, Bloodwood
Friction polish finish
15" dia. x 4-1/2" high



NOVEMBER SHOW-N-TELL

• Photography by Jim Schoeffel •



Bob Poetzsch
Plate
Figured Sycamore Burl
11-3/4" dia. x 1-1/4" high



David Perez
Bowl – distorted
Myrtle wood
7-1/2" x 7-3/4" x 2-1/2" high



David Wood
Bowl with Natural Edge
Maple Burl
9-1/2" x 8" x 4-1/2" high

David Hollister
Bowl with Natural Edge
Cherry
7-1/2" dia. x 4-1/4" high



David Perez
Two Bowls
Spalted Carob
3" dia. x 1-3/4" high



David Wood
Platter
Maple Burl
13-1/4" dia. x 3" high



NOVEMBER SHOW-N-TELL

• Photography by Jim Schoeffel •



Larry Klick
Platter
Chestnut
Walnut oil & wax finish
7" dia. x 3/4" high



Larry Klick
Bowl
Apple with Brass inlay
Pens Plus finish
7" dia. x 4-1/2" high



Roger Crooks
Dyed Bowl
9-1/2" dia. x 1-7/8" high



Larry Klick
Bowl
Cherry with two brass inlays
Dr's Woodshop Wax finish
8-3/4" dia. x 4-1/4" high



Fenix Sanders
Bowl with Bark Inclusion
Ash
beeswax finish
10-1/2" dia. x 3-1/2" high



NOVEMBER SHOW-N-TELL

• Photography by Jim Schoeffel •



Roger Crooks
Dyed Bowl
8-1/4" dia. x 1-1/8" high



Roger Crooks
Bowl of Apples
Bowl: 9-1/4" dia. x 3-1/8" high
Apples: 2-3/8" to 3" dia. x 2-1/2" high



Jim Schoeffel
Two Vases
Left: Plum
Right: Walnut
Wipe-on Poly finishes
Left: 1-1/2" dia. x 5-1/2" tall
Right: 1-1/4" x 2" x 4-1/2" tall
Walnut vase is 2-axis turning



Jim Schoeffel
Closed Rim Bowl
Maple Burl
Wipe-on Poly finish
4-7/8" dia. x 2-5/8" high



Jim Schoeffel
Bowl
Redwood Burl
Wipe-on Poly finish
8-7/8" dia. x 3-1/2" high



NO MEETING IN DECEMBER :(



Happy Holidays

We are starting strong out of the gate in January 2020, with our Annual Tool Swap and Sale.

Then in February, we will be hosting...**Stuart Batty!**

Stuart is a seriously talented turner, instructor and motivator. You don't have to use his 40/40 grind on your bowl gouge to get a lot out of his demonstrations. I highly recommend also attending his all-day demo and/or his hands-on class. Not to be missed!

There will be no meeting this month. See you in the new year!

—bk

JANUARY PROGRAM • NWWT MEMBER TOOL SALE & SWAP

Our January meeting will be our Annual Tool Sale & Swap Meeting.

Bring your excess tools, jigs and other turning accessories to sell and look for bargains from other members.

Sales will start at 6:30pm sharp when the bell rings, so arrive in time to set your items out on a table and look around. **Please label all your items** with tape with your name and asking price.

The Annual NWWT Sale & Swap is a great way to part with those tools that you seem to never use anymore and also make room for those tools you're going to buy from your fellow members!

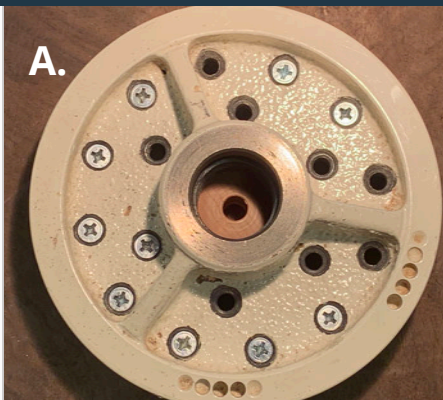
You also might want to **consider donating a few tools to be sold on the Club's sale table**. Another great way to help fund the Club so it can continue bringing in world-class demonstrators and workshops.

And...we always need **good turning wood stock donations for the Raffle!**



NOVEMBER'S TURNING TEASER — ANSWER

A.



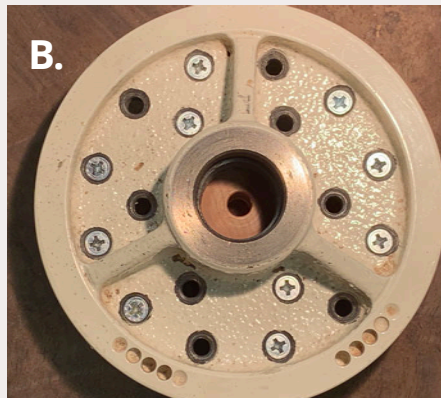
QUESTION: What might happen as a result of how this blank is mounted to the faceplate? Why?

ANSWER: The real answer to the November Question has a lot of "Yabut, and what if" to it; bottom line is about **balance**. Here's why: every faceplate out there has a different hole pattern, so it is unlikely that you will be able to get the piece mounted in perfect balance every time. You still should try for the best balance you can get every time. That said, **always**

try to mount the screws to your blank such that they are distributed evenly in the hole pattern, both for distance from the axis and distance between screws. The situation in the image on the left (A.) would more than likely result in imbalance, requiring slower speeds and sheer brute force and awkwardness in the cutting. The situation in the image on the right (B.), while not totally balanced is better.

—Tom Willing

B.



FEBRUARY 2020 NWWT DEMONSTRATOR – STUART BATTY

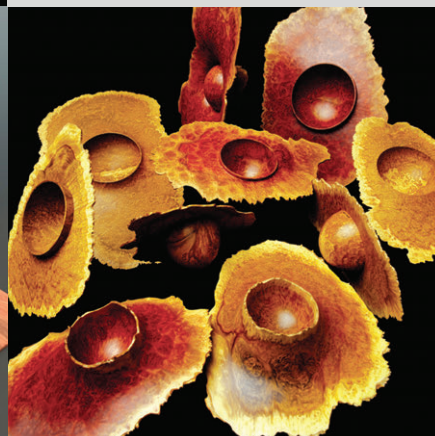
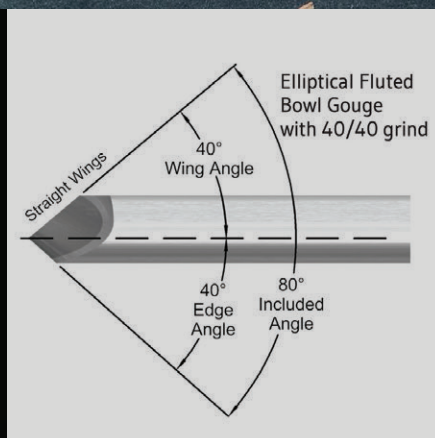
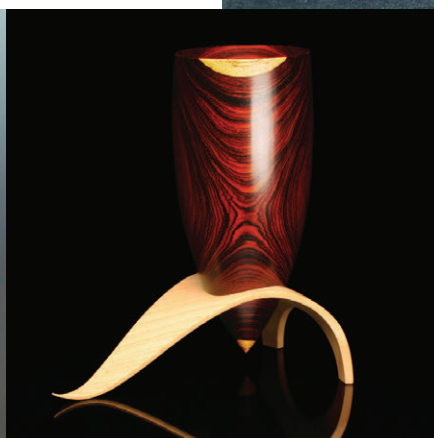


February Demonstrator STUART BATTY

Monthly Meeting:
Thursday, Feb 6th @ 6:30pm

All Day Turning Class:
TBA

All Day Demo:
TBA



Location: Multnomah Arts Center, 7688 SW Capitol Hwy, Portland, OR 97219

MARCH 2020 NWWT DEMONSTRATOR — JANICE LEVI

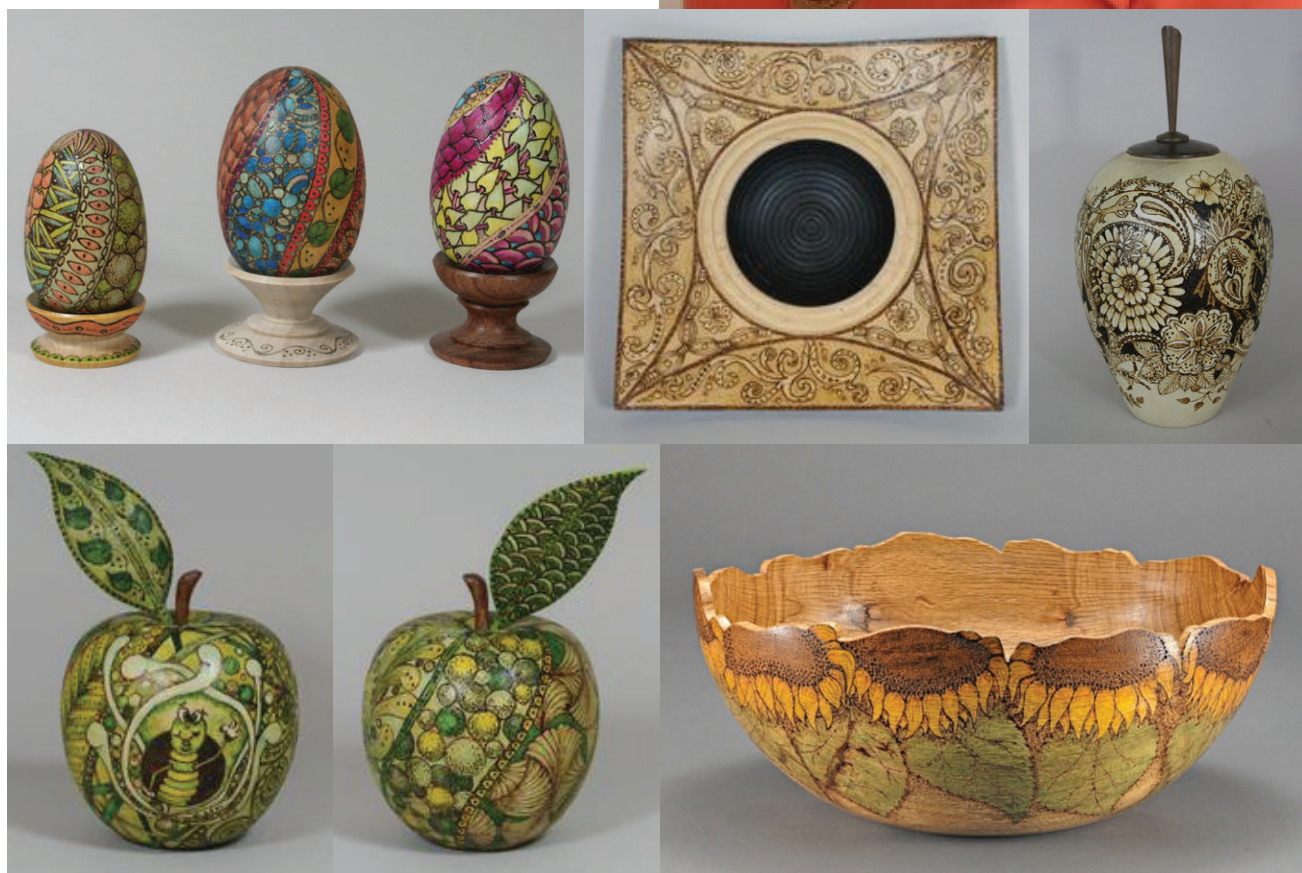


March Demonstrator JANICE LEVI

Monthly Meeting:
Thursday, Mar 5th @ 6:30pm

All Day Turning Class:
TBA

All Day Demo:
TBA



Location: Multnomah Arts Center, 7688 SW Capitol Hwy, Portland, OR 97219

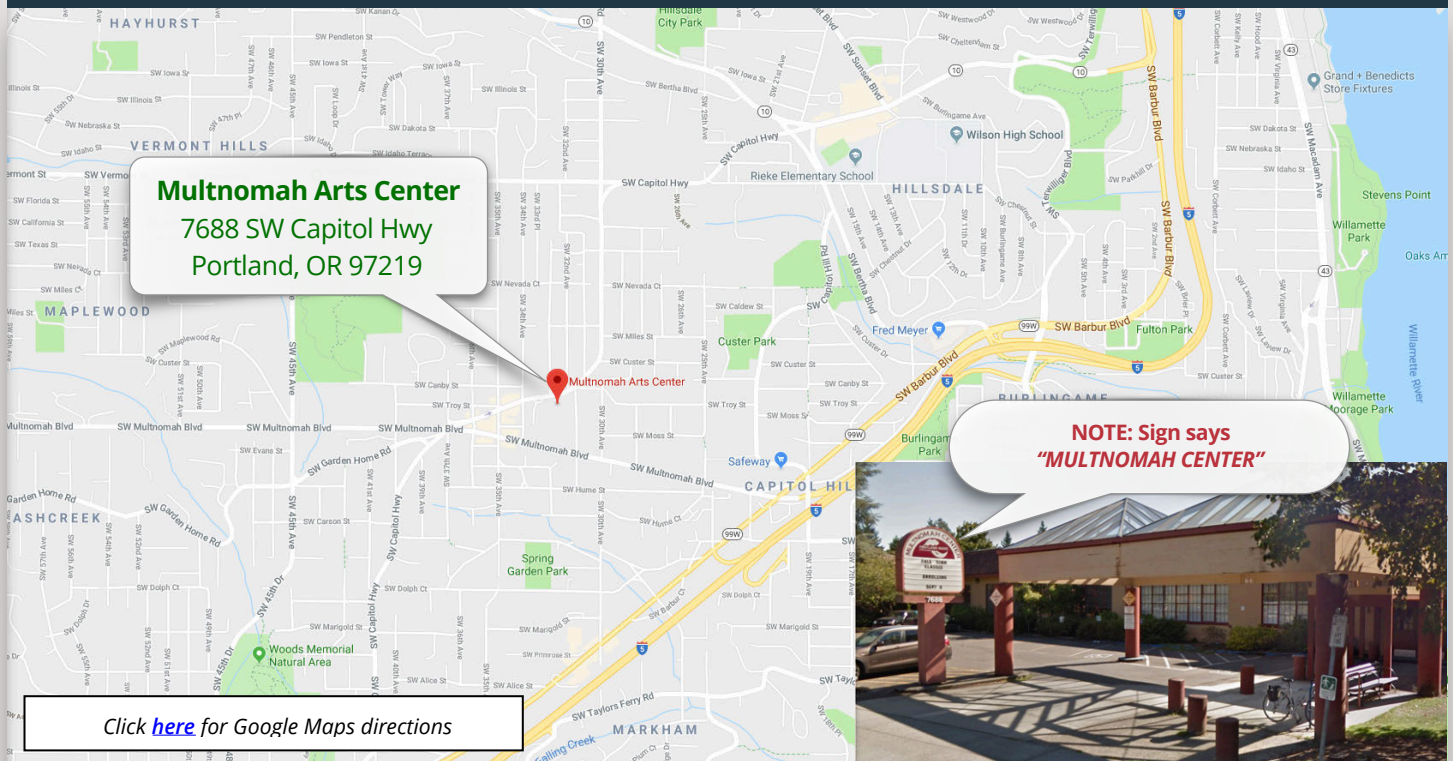
2019 NWWT MEETING SCHEDULE & PROGRAMS

NORTHWEST WOODTURNERS

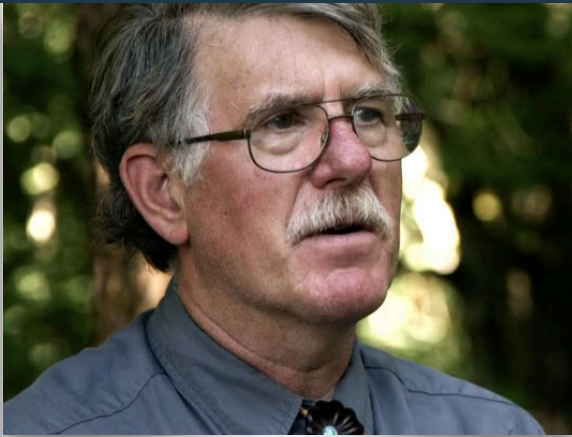
1st Thursday of each month at 7pm in the Main Auditorium
The Multnomah Arts Center, 7688 SW Capitol Hwy, Portland, OR 97219

DATE	PROGRAM	CHALLENGE
Thursday, January 3	Annual Tool Swap Meet	"Rescued" (Repaired) Turnings
Thursday, February 7	Dale Larson – "Picking the Best Part of the Tree"	New-Tool Turnings
Thursday, March 7	Bill Karow – "Bird's Beak Vases"	Naturally Figured Pieces
Thursday, April 4	Rick Rich – "Table Lamp"	Bird's Mouth Bowls
Thursday, May 2	Jay Shepard – "Finishing"	Turn a Table Lamp
Thursday, June 6	Reed Gray (aka RoboHippy) – "Bowl Turning"	Hollow Form
Thursday, July 4	No Meeting	None
Saturday, August 3	Picnic + Auction!	None
Thursday, September 5	Multi Station Demo	Collaboration Pieces
Thursday, October 3	Scott Hampton – "Turning Holiday Ornaments"	Pyrography
Thursday, November 7	Carl Jacobson – "Using Carbide Tools"	Holiday Ornaments
December	No Meeting	Happy Holidays!

MAP TO THE MULTNOMAH ARTS CENTER



DALE LARSON • OPEN SHOP



For about the last 10 years, Howard Borer and I have hosted Open Shop Saturday in my shop in Gresham. The idea behind Open Shop is to help new turners with projects and ideas. We have a good group of experienced turners who help new turners mount the wood on the lathe and learn how to sharpen and present their tools to the wood. I like to say: *We have no standards, everyone is welcome.*

—Dale

When: Generally the last Saturday of the month from 9am to noon.

Where: Dale's shop at [5010 SE Regner Rd, Gresham.](#)
(503) 661-7793

NOTE: There will not be an Open Shop in December. We'll start again on January 25th, 2020.



WOMEN IN TURNING • OPEN SHOP

The women's turning group will be meeting **Saturday, December 7th, 9am–12noon.** We meet at the Southwest Washington Woodturners meeting place: 11600 West 20 St, Vancouver, WA 98660 [\[map\]](#). The group is open to any women who are interested in learning more about turning. All levels, even those who have not turned before, are welcome.

If you plan to attend or would like to be on the email list, contact me at woodspinner@gmail.com, as there are a limited number of lathes available.

—Kathleen Duncan



EDITOR'S NOTE OF THANKS



I have enjoyed re-designing and editing the Northwest Woodturners monthly newsletter this past year. Thanks to all of you who have given me your support and positive feedback. I will strive to continue serving up relevant and interesting content, as well as keeping everyone up-to-date on all things woodturning.

I want to acknowledge the tremendous assistance that **Len Otto** has provided in proofreading each month's newsletter before I upload them. He has been integral in making sure the newsletters are comprehensible and all the 't's are crossed and 'i's dotted. Thanks, Len!

I also want to thank **Jim Schoeffel** for the enormous amount of time and effort he contributes every month, photographing and cataloguing all the Challenge and Show-n-Tell pieces. The quality of his photography is an extremely huge part of why we were awarded Best Club Newsletter by the AAW this year. Thank you, Jim!

Be safe + stay sharp,

—bk



NWWT STORE NEWS



New Items: We now carry **Klingspor 9"x11" sheet sandpaper** in 80, 100, 180, 220 and 320 grit. It is a premium aluminum oxide grit, resin-bonded to a sturdy B/C- weight paper and has a zinc stearate coating which helps prevent the paper from loading up. Price is two sheets for a dollar.

We also have **Klingspor 2" and 3" sanding discs** and the **Mirka Goldflex foam back abrasive pads**. The Mirka pads can be used wet or dry and work great on flat work.

Also remember, as a NWWT member, you get a 10% discount on many Klingspor items. To see your discount, you must log into the website, woodworkingshop.com.

2" & 3" H&L Disc Bone Shaped Hand Pads are a handy accessory for anyone who uses sanding discs. It is great for hand sanding and works for any hook & loop paper including Abranet when cut into small strips or squares. \$10 each.

Also, **Michael Hosaluk's Carbide Burnishers** (\$10) are in stock. Great for forming a continuous, sharp-edged, wire "hook" on all your scrapers.

—John Sutter

OTHER WOODTURNING CLUBS • MEETINGS & PROGRAMS

One meeting every month not enough?

*Check out what other clubs around our area are doing!
(Please click on the clubs' website links to verify the information presented below.)*



WOODTURNERS OF OLYMPIA
woodturnersofolympia.org

2nd TUESDAY of every month @ 5:30pm
First Baptist Church of Olympia
904 Washington St. SE, Olympia, WA 98507 [\[map\]](#)

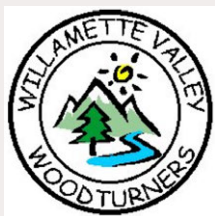
December 10, 2019: Holiday Party!
Gift Exchange, Door Prizes and a Drawing for Guests
(NOTE: new time)



PACIFIC NORTHWEST WOODTURNING GUILD
woodturningguild.com

2nd WEDNESDAY of every month @ 7:00pm
MWA Architects
70 NW Couch St. Portland, OR [\[map\]](#)

December 11, 2019: No December Meeting



WILLAMETTE VALLEY WOODTURNERS
willamettevalleywoodturners.com

2nd THURSDAY of every month @ 6:30pm
Center 50+ Senior Center
2615 Portland Rd, NE Salem, OR 97303 [\[map\]](#)

Visit website for meeting info.



CASCADE WOODTURNERS
cascadewoodturners.com

3rd THURSDAY of every month @ 6:45pm
Willamette Carpenters Training Center
4222 NE 158th Ave, Portland, OR 97230 [\[map\]](#)

December 19, 2019: No December Meeting



SW WASHINGTON WOODTURNERS
southwestwashingtonwoodturners.com

4th WEDNESDAY of every month @ 7:00pm
Friends of the Carpenter's Center
1600 W 20th St, Vancouver, WA 98660 [\[map\]](#)

December 7, 2019: Saturday Open Shop
Visit website for more details.
(NOTE: new date & time)



BEAVER STATE WOODTURNERS
beaverstatewoodturners.com

4th THURSDAY of every month @ 6:00pm
Coburg Community Charter School
91274 N Coburg Rd, Coburg, OR 97408 [\[map\]](#)

Visit website for meeting info.

CASCADE WOODTURNERS 2020 DEMONSTRATORS

Cascade Woodturners Association, the other woodturning club in Portland, has some interesting demonstrators coming to their monthly meetings in the first couple months of 2020.

I highly recommend attending as many club meetings as you can. You'll learn valuable tips and techniques and can interact with fellow woodturners who share your interest in all things woodturning.

Hope to see you there!

—bk

Cascade Woodturners meets the 3rd Thursday of each month at @ 6:45pm at the Willamette Carpenters Training Center 4222 NE 158th Ave, Portland, OR 97230 [\[map\]](#)



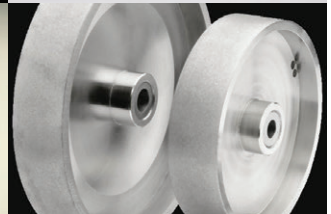
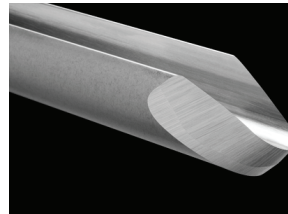
January Demonstrator

JIMMY ALLEN

D-WAY TOOLS

Monthly Meeting:
Thursday, Jan 16 @ 6:45pm

**D-WAY WILL HAVE TOOLS
FOR SALE
FOLLOWING THE DEMO.**



Location: Pacific Northwest Carpenters Institute ("PNCI"), 4222 NE 158th Avenue, Portland, Oregon 97230



**February
Demonstrator
ERIC LOFSTROM**

Monthly Meeting:
Thursday, Feb 20th @ 6:45pm

All Day Turning Class:
Friday, Feb 21st
(\$100 - limited to 8 spots!)

All Day Demo:
Saturday, Feb 22nd (only \$25)



Location: Pacific Northwest Carpenters Institute ("PNCI"), 4222 NE 158th Avenue, Portland, Oregon 97230



**March
Demonstrator
DAN TILDEN**

Monthly Meeting:
Thursday, Mar 19th @ 6:45pm

All Day Turning Class:
Friday, Mar 20th
(\$100 - limited to 8 spots!)

All Day Demo:
Saturday, Mar 21st (only \$25)



Location: Pacific Northwest Carpenters Institute ("PNCI"), 4222 NE 158th Avenue, Portland, Oregon 97230

LOCAL FREE DEMOS

Every month, our local woodworking stores offer a variety of free demonstrations. Consider stopping by and checking them out.

WOODCRAFTERS

12/07/19	Bill Karow Woodturning	Sat	10am-3pm	Woodcrafters, Portland
12/14/19	Fred Kline Woodturning	Sat	10am-3pm	Woodcrafters, Portland
12/21/19	Mercedes McCrieght Pyrography	Sat	10am-3pm	Woodcrafters, Portland
12/28/19	Jim Tharp Woodcarving	Sat	10am-3pm	Woodcrafters, Portland

ROCKLER

12/14/19	Router Table Techniques	Sat	11am	Rockler, Portland
12/21/19	Makita Power Tools	Sat	11am	Rockler, Portland

WOODCRAFT

01/04/20	Turning A Tagua Nut	Sat	1pm-2pm	Woodcraft, Tigard
01/25/20	Applying A French Polish	Sat	1pm-2pm	Woodcraft, Tigard



Woodcrafters, Portland (503) 231-0226
Rockler, Beaverton (503) 672-7266
Woodcraft, Tigard (503) 684-1428

woodcrafters.us
rockler.com
woodcraft.com

[Note: Many other fine classes and demos are available from these local stores.]

OUR VENDOR SPONSORS ARE KEY TO OUR SUCCESS!

A key component of our financial stability as a club is our vendor sponsors. Our vendors provide periodic gift certificates for the raffle and our annual auction. In addition we receive product donations from some of them. If that were not enough, some also give individual discounts to club members. All this contributes to our financial health. We encourage all of you to patronize our vendor sponsors. It is good for you, good for them, and good for the club.

—————  *Click on each logo to go to their website*  —————



Gift Certificates



Gift Certificates + Merchandise Donations



10% Off Regular Price



Gift Certificates + Merchandise Donations + 10% Off



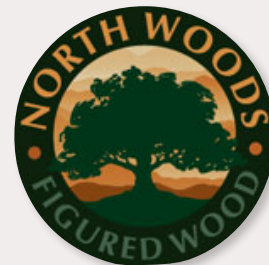
10% Off Regular Price

Penn State Industries

10% Off Regular Price



Gift Certificates + 10% Off



Gift Certificates + Merchandise Donations

Special note regarding Northwoods Figured Wood: Northwoods is evolving into a slab supplier and will no longer be in the turning blank business. We are sorry to see them go. They were a huge sponsor for us. We thank them deeply for their historical support and wish them the best in their new endeavor.

BULLETIN BOARD

EUCALYPTUS TREE

We are in need of having a Eucalyptus tree felled/removed for the purposes of placing a new home. It has not been felled yet, and I am in the midst of cleaning up the area around the base to accomplish the felling.

I have attached some pics of the tree although it may be a little difficult to make out the particulars as the tree is still fully foliate. I cannot remember the variety of the Eucalyptus, but I can tell you the tree is about 35 years old and healthy.

There is a main base maybe 6' high that then splits into 4 trunks that currently range in diameter from about 12" to 24"+ and upwards of 30' long. In other words, a fair lot of usable wood in big and small sizes. Years ago, I had a number (now lost) of a guy in Deadwood that took a bunch of smaller branches to make buttons with so even the smaller stuff is good (so I'm told) for buttons, pens, wands, staffs, etc.

I realize that it might be difficult for any one person or even group to make use of the entire tree, but if you or any of your group are interested in any/all, **we'd be happy to donate it.**

If by chance, you have someone in your group that might be able to fell it for little or no cost that would also be appreciated (although I can tell you its going to be a tricky fall). No worries if not.

As long as you or someone you know is interested in the parts after it has been felled, I can communicate with interested parties as the felling approaches or is done.

We have the means to dispose of the wood as waste, but being as unique as it is, we would much rather see it used productively.

If you or any of your group would be interested in logs, rounds, branches or even leaves, you are welcome to disseminate our phone number or email address to them.

Thank you for your interest,

Dave and Jeanette Wingate
503-678-5658
wingatedl@gmail.com



BULLETIN BOARD

MADRONE WOOD

I harvested this Madrone Burl a few weeks back in West Linn, and I've tried to keep it wet or submerged.

It's about 8" at the trunk, but would make several decent sized bowls I'm thinking.

If you are interested feel free to contact me.

Brandon Stadel

brandonstadel@yahoo.com



BULLETIN BOARD

FOR SALE • VEGA LATHE



Dale Larson has let us know that the The Joinery is moving and is eager to sell a used Vega lathe. Here are the particulars:

Vega spindle lathe, 1hp motor, 110v, 14" swing

If interested, contact Cassandra Jackson at the Joinery.

503-788-8547

cassandra.jackson@thejoinery.com



If you have woodturning tools for sale,
know of a tree being taken down in the near future,
a new source for woodturning stock,
upcoming estate sales,
need help
or have questions that need answering...

[let me know](#) and I will post it on the Bulletin Board section of next month's NWWT newsletter.

EDITOR'S NOTES

Past newsletters can be accessed from the NWWT website [here](#).

If you don't have internet access, provide me with your mailing address, and I will print out a copy, lick a stamp and mail a copy of the newsletter to you via U.S. Postal Service.

If you do not receive a courtesy email from me by the beginning of the month indicating that a new newsletter is available online, please send me your current email address.

Submissions to the newsletter are due by the last Thursday of the month.

Articles, tips, web links, classified ads and other woodturning-related items are welcome! Send them to [me](#).

For other business inquiries, contact Northwest Woodturners at:

Northwest Woodturners
P.O. Box 1157
Lake Oswego, OR 97035

NWWT membership has benefits!

Show your NWWT Membership Card to receive a discount off your purchase at Gilmer Wood, Rockler, Woodcraft, Woodcrafters and Crosscut Hardwoods.

