

NORTHWEST WOODTURNERS



Founded 1995

Pacific Northwest Oregon Chapter of The American Association of Woodturning

AAW | AMERICAN ASSOCIATION
OF WOODTURNERS

PRESIDENT'S MESSAGE — STEVE NEWBERRY



Hi Woodturners,

It's April, and we've had the pleasure of having been visited by multiple famous woodturners from around the world! The Oregon Woodturning Symposium was amazing, again.

We turn now to local talent: Rick Rich is demonstrating a table lamp this month at our April meeting. I've enjoyed his stool turning class in the past and am looking forward to this one.

I'll be bringing more of the rough turned and seasoned bowls that Bill Herrold never had opportunity to finish. Marilyn, Bill's wife, donated them to the club, so we'll sell them to raise funds for NWWT.

Lastly, here is a picture of a stool I turned at a Rick Rich class.

—Steve



Editor's Note: Now that the Oregon Woodturning Symposium has finished and the dust has settled, Mike Meredith will assume the office and responsibilities of President of Northwest Woodturners. Steve Newberry has been serving as our Interim President when Mike Porter had to step down earlier this year to focus on his health.

Next time you see Steve and Mike M., please thank them for their service in helping to keep our club running smoothly.

CLUB INFO

NORTHWEST WOODTURNERS www.northwestwoodturners.com

Meetings are held at 7pm on
the 1st Thursday of each month at:

The Multnomah Arts Center
7688 SW Capitol Hwy
Portland, OR 97219 [\[map\]](#)

Interim President
[Steve Newberry](#)

Vice President
[John Beechwood](#)

Secretary
[Larry Klick](#)

Treasurer
[Roger Crooks](#)

Directors

Steve Newberry Lynne Hemmert
Mike Meredith Richard Hall
Barb Hall Jim Schoeffel

STAFF VOLUNTEERS

Monthly Raffle
Lynne Hemmert Alex MacDonald

Library
Jackie Yi Kim Talley

Photographer
Jim Schoeffel

Website
Roger Crooks

Demo Coordinator
Bill Giffin

Storekeeper
John Sutter

A/V Backup
Helen Brown

Newsletter Editor
[Bill Karow](#)
(503) 490-0325

VP'S "TURN ON THINGS" — JOHN BEECHWOOD



For the April meeting, Rick Rich from Cascade and SWWWWT will demonstrate making a table lamp. In May, Jay Shepard will give a demonstration on finishing. And in June, Reed Gray (Robo Hippy) is tentatively scheduled to do a demonstration on basic bowl turning.

I also have reached out to Carl Jacobson for later in the year. I haven't finalized which month or the focus of the demo at this time.

For this month's challenge, keeping with the past demonstration, it will be Birds Mouth Bowls/Vases. The Show-n-Tell is open to any work you want to share, but I also encourage new work.

I was fortunate enough to attend the Oregon Woodturners symposium. A big shout out to Mike Meredith and everyone else who helped coordinate this event. It was impressive that they were able to get some big names for such a formally small event. I see this event getting even bigger in two years!

I was able to attend some very impressive demonstrations! However, the one thing they all had in common is that they stress the need to have sharp tools! More important than the grind angle or material of the steel, your tool needs to be sharp. Even if you present a tool to the wood perfectly, you will get a bad cut with a dull tool!

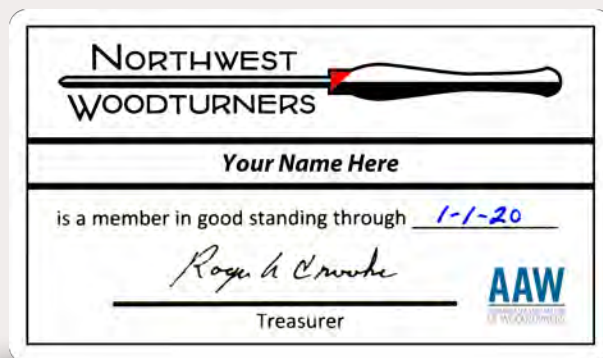
I will be working on putting together a day to do a sharpening workshop in the coming months.

—John

MEMBERSHIP CARDS

Please don't forget to renew your Northwest Woodturners club membership!

As always, [paying on-line](#) is the easiest for me and less error-prone, but we appreciate your money any way you want to pay. Just a reminder, several years ago we moved our membership plan from an annual plan (Jan-Dec) to an anniversary plan (12 months from when you join). You get a renewal message a month before your membership expires, so wait until you get your renewal notice to pay.



Also, don't forget to [renew your AAW membership](#), which is an annual plan, so join or renew now!

—Roger Crooks

LAST MONTH'S MEETING • BILL KAROW DEMO



Making a Bird's Mouth Bowl.

Last month's meeting was a lot of fun!

It was the first time I led a demo, and I have to admit, I was a little nervous.

The time flew and before I knew it, the show was over. Hopefully, you were able to follow along and were possibly motivated to create your own Bird's Mouth Bowl for this month's Monthly Challenge.

Here is a link to the handout on how to turn them: [How To Turn a Bird's Mouth Bowl](#).

Thanks for coming to the demo!

—Bill



TIP (OR TRICK) OF THE MONTH

Sizing a Tenon with a Carpenter's Pencil for a #2 (50mm) Dovetail Jaw Chuck:

Instead of sticking sharp metal points of a compass divider into spinning wood to mark the diameter for cutting a dovetail tenon to hold your piece, lay a short section of a Carpenter's Pencil flat on top of your tailstock's Nova, Oneway or Robust live center. Then touch it to the the spinning wood to make a mark a circle.

That measurement is the perfect diameter to fit into a chuck equipped with the most common-sized #2 (50mm) dovetail jaws.

Just turn a dovetail to the mark, and voila...perfect fit!

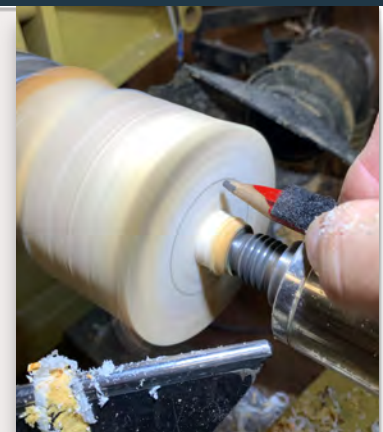
—Bill



*Carpenter's Pencil:
Lay flat on the live center
in the tailstock.*



#2 (50mm) Jaws on Chuck



I attached a piece of hook-and-loop on the top side of the pencil in the photo to affix it to my headstock, for easy access.

THIS MONTH'S CHALLENGE — BIRD'S MOUTH BOWLS

There were 17 entries in the March Naturally Figured Turnings Challenge!

I think that might be a record number of entries! Lots of different forms and beautifully figured wood. Bill Karow won the Challenge with a Natural Edge Cherry burl bowl. Great job everyone!

We had 7 pieces in the March Show-n-Tell. Larry Klick won with his Mahogany Bowl with a Textured Rim.

The April Challenge, "BIRD'S MOUTH BOWLS" is another good one!

To give you all some motivation to turn this month's Challenge piece, here's the gaggle of Bird's Mouth Bowls I brought to last month's meeting:



For every monthly meeting, it's our hope that members – whether beginner, intermediate or advanced – will take part in the Monthly Challenge, as well as bring pieces to the Show-n-Tell. It's always fun and informative to see what (and how) our fellow members are turning. And the criticism is always constructive!

MARCH CHALLENGE — NATURALLY FIGURED WOOD

• Photography by Jim Schoeffel •



Bill Karow
"Natural Edge Bowl"
 Cherry burl
 9-3/4" dia. x 6" deep



John Beechwood
"Flower Pot"
 Spalted Alder
 7-3/8" dia. x 5-3/4" deep



John Beechwood
"Yarn Bowl"
 Maple w/Feather
 5-3/8" dia. x 4-3/8" deep



Bill Karow
"Perfect Bowl"
 Cherry burl, warped, cracked and carved
 8-1/2" dia. x 5" deep



John Beechwood
"Walnut Bowl"
 Spalted Walnut w/Feather
 13" dia. x 5" deep

MARCH CHALLENGE — NATURALLY FIGURED WOOD

• Photography by Jim Schoeffel •



John Beechwood
"Natural Edge Bowl"
 Quilted Maple
 6-1/2" dia. x 4" deep



Skip Burke
"Oak Bowl"
 Oak
 7" dia. x 2-1/2" deep



Skip Burke
"Hollow Form with Inlay"
 5-1/4" dia. x 7-1/2" tall



Tim West
"Winged Bowl"
 Black Walnut
 Wings: 5" x 10-1/2" x 4-1/2" high
 Bowl: 3-1/2" dia. x 3" deep



Miguel Hernandez
"Natural Edge Hollow Form"
 Walnut
 7-1/2" dia. x 7-1/2" deep
 Finial: 5-1/4" tall

Rob McIlwain
"Bowl"
 Maple Burl Crotch
 5-5/8" dia. x 2-1/2" deep



Skip Burke
"Hollow Form"
 Maple
 3-1/4" dia. x 6-1/2" tall

MARCH CHALLENGE — NATURALLY FIGURED WOOD

• Photography by Jim Schoeffel •



Dan Baker
"Platter"
Maple Burl
13" x 17-1/2" x 2" deep



Steve Newberry
"Platter"
Wormy, Figured Maple
12-3/4" dia. x 2-1/8" deep



Phil Lapp
"Bowl"
Ash Crotch
12-5/8" dia. x 2" deep



MARCH CHALLENGE — NATURALLY FIGURED WOOD

• Photography by Jim Schoeffel •



Phil Lapp
 "Salad Bowl"
 Figured Birch
 13-3/4" dia. x 3-1/4" deep



Larry Klick
 "Bowl"
 Walnut
 7" dia. x 1-1/2" deep

MARCH SHOW-N-TELL

• Photography by Jim Schoeffel •



Larry Klick
 Bowl with Textured Rim
 Mahogany w. Dr's Walnut Oil & Wax
 13-1/4" dia. x 2-1/4" deep



MARCH SHOW-N-TELL

• Photography by Jim Schoeffel •



Ron Edgerton
Segmented Bowl
Walnut & Maple – 304 pieces
7-1/4" dia. x 4- 3/4" deep

Rob McIlwain
Bowl
Maple
8-5/8" dia. x 3" deep



Rob McIlwain
Bowl
Cherry
6-3/8" dia. x 2-3/6" deep



Skip Burke
Natural Edge Bowl
Maple
9-1/4" dia. x 3-1/2" deep

MARCH SHOW-N-TELL

• Photography by Jim Schoeffel •

Miguel Hernandez*Four Nested Bowls**Ash*

#1 - 11-3/8" dia. x 5" deep

#2 - 8-3/8" dia. x 4" deep

#3 - 6" dia. x 3" deep

#4 - 4" dia. x 2" deep

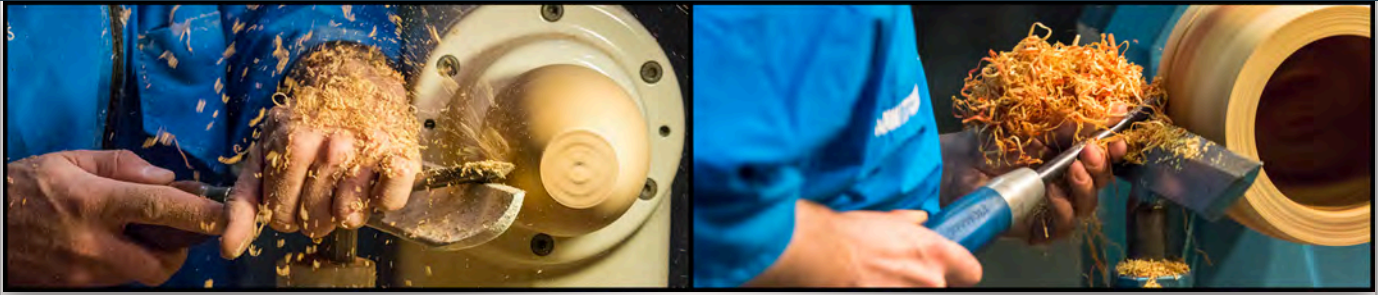
**Miguel Hernandez***Three Nested Bowls**Natural Edge Ash*

#1 - 13-1/2" dia. x 7" deep

#2 - 10-1/2" dia. x 4-1/2" deep

#3 - 8-3/8" dia. x 3-1/2" deep

AAW — COMPLIMENTARY GUEST MEMBERSHIP



By signing up for a [Complimentary Guest Membership](#), you can have limited access to a sampling of AAW resources for a full 60 days. You'll be able to explore what the AAW has to offer, kick our tires, and hopefully decide to become a full-fledged, paid AAW member to benefit from everything the AAW has to offer. Click [here](#) to view/download a list of publications and services available to full/paid AAW members.



NWWT STORE — UPDATE



Restock: We have restocked the store with Klingspor 2" and 3" sanding discs and the Mirka sanding pads.

Remember the Mirka pads can be used wet or dry and works great on flat work.

Also remember, as a NWWT member, you get a %10 discount on many Klingspor items. To see your discount, you must log into the website, woodworkingshop.com.

New Items: Whenever I place a new order, I look for things that might be of interest to members and that I use all the time. I ordered 5 of these (right). \$10 each. If these sell quickly, I will order more.

New **2" & 3" H&L Disc, Bone Shaped Hand Pad** is a handy accessory for anyone who use sanding discs. It is great for hand sanding and works for any hook & loop paper including Abranet that I cut into small strips or squares. \$10 each.

Also, **Michael Hosaluk's Carbide Burnishers** (\$10) are in stock. Great for forming a continuous, sharp-edged, wire "hook" on all your scrapers.

—Roger



APRIL'S TURNING TEASER — QUESTION



Each month, if space allows (and we don't run out of material), we'll show you a photo and ask a question or two about it.

We'll let you think about it for a month, then give you our thoughts in the next newsletter.

April Question:

What does a lathe do as a consequence of its similarity to a glass of ice water?

(Answer in the May newsletter.)

MARCH'S TURNING TEASER — ANSWER



March Question:

A lot of us power sand our larger pieces. I love my angle drill for this purpose. This month's teaser is for anyone who uses corded drill motors.

What do you see, here?

happen to squeeze the trigger switch while the chuck key is engaged, well, it is hard on knuckles and fingers and noses, and... Keep that chuck tied to the plug end of the cord so that you have to unplug the tool before doing anything with the chuck.

Answer: I see this one a lot. Note how the chuck key is attached to the cord where it can reach the chuck. Even when the cord is plugged in. Notice how big and comfy that paddle switch is? If you

Think you might have a good submission? Send us a photo and we'll try to include it in a future newsletter.

OWS: A LOOK BACK



OREGON WOODTURNING SYMPOSIUM

As were the two previous iterations, the 2019 OWS was very successful!

We made enough to cover expenses, run the 2021 OWS, return some funds to the participating clubs and sponsor another round of OWS grants to support woodturning in

Oregon. All the boxes got checked. I was concerned about the effect of the AAW symposium falling between the 2017 and 2019 OWS. Looking back, from the point of view of the OWS, I think it had the worst, or maybe the best, possible effect; it increased the local interest in woodturning but burned up the energy of our volunteers. With the exception of the usual suspects who are ready to do what is needed whenever it is needed, this year had the feel of pulling teeth to get volunteers. That observation was made throughout the clubs taking part on the OWS. The cameras were admirably manned in our room, and Mike Porter fell back into his natural habitat as raffle ticket salesman. We were short of clean up and help for other symposium functions. But, help almost always appeared in the nick of time and, beavering on, we got the job done.

This was a demonstrator slate the quality of which we won't see again for some time, if ever. In part by early effort and part by luck, we had more big names than we than we could have anticipated. Those big names brought in more attendees than we ever expected. Registration was cut off at 400. We could have registered 500 very easily. In 2021, registration will be limited to 400 from the outset; 375 if I can talk the board into it. The 2021 demonstrator line up is very good, but not as good as 2019 (that would be very difficult to repeat) so perhaps the demand won't be as great. But, I'll bet it is.

From a management prospective, running the OWS reminds me of my days on the farm. No part of farming is hard but there are so damn many parts. As of this date, we have not looked over the evaluation forms. Overall, I'm confident the responses will be positive. There will be comments about technical issues and the unavoidable, but maddening, administrative foul-ups. The one demonstration I got to see was outstanding. The small bits of the 10 others I saw were equally good. With one exception, all the demonstrators were excellent. The vendor show was well attended, and the instant gallery was full of amazing pieces.

What do we try to improve for next time? Videography is always the first thing to be criticized. Roger did his level best to make it was the best it could be but experience was sometimes lacking and to be honest, some of the demos were difficult to show on camera. There are things about the Expo Center that we can help improve for the next round. Better, or at least more obvious, transfer of information to attendees needs to be accomplished.

Every year we learn things that make the next Symposium easier. That's the theory anyway. What we do is fix old problems and make way for the new ones. Then those will get fixed and so on and so on.

Thanks to all those of you that helped out. The attendees are the reason we have a symposium, but the volunteers are the reason it happens. Only 715 days left until it all starts again.

—Mike Meredith

OWS • A LOOK BACK

Here are a few images from the Symposium. Photography by Jim Schoeffel and Bill Karow.



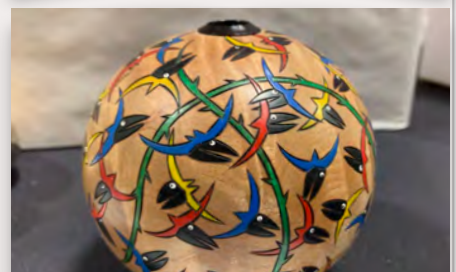
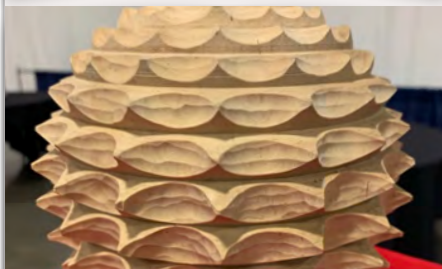
OWS • A LOOK BACK



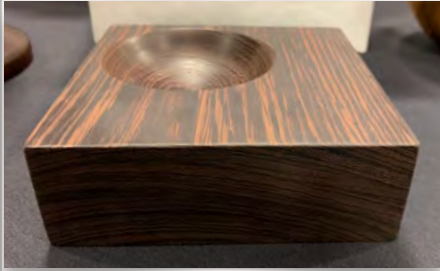
OWS • INSTANT GALLERY

Here were some my favorite pieces from the Instant Gallery.

—Bill



OWS • INSTANT GALLERY



GLENN LUCAS CLASSES AND DEMO • REVIEW

After the extremely successful Oregon Woodturning Symposium, we were fortunate to have Irish Bowl Turner, Glenn Lucas for 3 additional days. Glenn is an exceptional teacher and woodturner but more impressive, he is just a down-to-earth nice guy.

Demo Day - On Monday, we were back at the “under construction” MAC and to their credit, they let us use the auditorium for Glenn’s All-Day Demo even though there was work still going on. Having the big screen and with the projector now working for two cameras (look-down and tripod camera), it all worked well. We had several new turners who had no idea of Glenn’s reputation and many non-NWWT members. The day went fast covering sharpening, turning a platter and then a bowl.

Class Days - Tuesday and Wednesday Glenn held a hands-on class at Dale Larson’s shop. We had all ranges of students from a brand-new turner that Mike Meredith hand-held all day, to those with many years of experiences. I was in the Wednesday class and with Dale and Mike on hand to help – what more could you ask for. Of all the classes I’ve taken, this was the best for tool technique. It’s easy to get used to bad habits and bad technique, I had many of both and hopefully will remember all I learned. Dale let us take all the extra blanks home and I used the next two days to practice what I learned. Muscle memory is so critical to technique and without practicing, easy to forget. When you make a good clean cut, it’s like a good golf shot – it feels really good.

Here are some comments from other attendees:

“I think I learned more about sharpening and woodturning in the one day class with Glenn Lucas than I have in any other single day of my woodturning experience.”

“It was awesome!”

“I went to both the Demo and the class. The demo was a great learning experience and well worth my time. The hands on class was great. Where can you go and have Glenn Lucas (an amazing instructor) backed up by both Dale Larson and Mike Meredith. I really enjoyed it all.”

“I thoroughly enjoyed the day. The biggest take aways for me was his showing how to use tools without saying you had to have something different to be successful. The day was filled with so many useful tips. I hope I can remember them.”

“I am not a member of NWWT, but of Cascade, and loved the class. Thanks for opening it to us! I, too, learned a ton, and some of the practices came together for me as they never have before. Great class, great teacher.”

Many thanks to Mike Meredith for recommending Glenn and making these three days happen in addition to hosting Glenn and providing 2 additional lathes for the class. Also, thanks to Dale for providing his new shop, the wood for the 3 days and his time. He was always there to help when needed. It is a lot of work to put these sessions together. We sold out the classes, the first one within 48 hours. It was well worth all the work and for NWWT, a financial success.

Who all is up for a trip to Ireland for a 5-day class? 😊

—Roger



GLENN LUCAS CLASSES AND DEMO • REVIEW



NORTH WOODS FIGURED WOOD • OPEN HOUSE



North Woods Figured Woods had a banner Warehouse Sale March 23rd and 24th.

The Spring Sale chalked up a record this year, with many fine spindle and bowl blanks, as well as plank lumber finding appreciative buyers.

It was a typical Les and Susan event, with turning demos by Tom Willing on Saturday and Mike Meredith on Sunday. Eggs were a big hit for that. There were hand-made chocolates by Honest Chocolates of McMinnville and Newberg, as well as a snack table festooned with fruits, nuts, cheeses, hot cocoa, tea, and coffee. To top it all off, the weather was glorious Spring sunshine so nice that the chorus of frogs even struck up their tunes in the mid-afternoon.



Many thanks to Northwoods for their many years of support for our club.

—Tom Willing

Note: Due to such great response of the Open House, Les and Susan are extending their Open House Warehouse Discount for the entire month of April.

Check their website for more information: [North Woods Figured Woods](http://NorthWoodsFiguredWood.com)



HANDS UP FOR SAFETY



Just two days after our last NWWT meeting (where I continually stressed the importance of safety whenever you're at the lathe!), I was turning a large piece of Black cherry. I had my face shield and safety glasses on, I was comfortable with my lathe speed and its holding ability, and was proceeding to rough-turn the piece round.

Here's what I did wrong: (1) The tool rest was shorter than the piece, so I was turning on only the right side, instead of sliding the tool rest left to turn down the entire length of the piece. (2) I was using a 5/8" bowl gouge that was so short from years of sharpening, it was awkward for my left hand to hold it down on the tool rest. (3) I got a catch as I was roughing on the far left end of the tool rest. The left side of the gouge caught the "wing" of unturned wood and forced my left ring finger down on the back of the tool rest, and the gouge slammed down on top of it, making a finger sandwich between two pieces of steel.

In hindsight, it was so stupid. Trying to save the last bit of tool steel wasn't worth it. And I should have known the situation was not as safe as I could have made it. Also, the three weeks of not being able to turn has literally added insult to injury.

Michael Hosaluk said at the Symposium, "**Your hands are your most important and sensitive tools.**" I plan on treating them with more care and respect from now on. Stay sharp and be safe.

—Bill Karow

APRIL 27 • DALE LARSON • OPEN SHOP

**April Open Shop**

For about the last 10 years, Howard Borer and I have hosted Open Shop Saturday in my shop in Gresham. The idea behind Open Shop is to help new turners with projects and ideas.

We have a good group of experienced turners who help new turners mount the wood on the lathe and learn how to sharpen and present their tools to the wood.

I like to say: *We have no standards, everyone is welcome.*

When: Generally the last Saturday of the month. This month, it will be **Saturday, April 27th**, starting at about 9am and going to around noon.

Where: Dale's shop at [5010 SE Regner Rd, Gresham](#).
(503) 661-7793

—Dale

Photos from March 30th Open Shop



JUNE 28 • R. E. VAUGHN WOODTURNING SCHOOL

SOUTHWEST WASHINGTON WOODTURNERS

R.E. Vaughn Woodturning School

1600 WEST 20TH STREET • VANCOUVER, WA 98660

**Friday, June 28****TURN A NATURAL EDGE FORM**Lead Instructor: **Dan Tilden**

\$135 includes a burl blank

This one day class focuses on turning a natural edge burl blank to create a piece of art. The class covers turning a basic bowl from a blank, proper tool control for basic cuts.

Class is limited to 8 participants. Pre-registration required, contact Brian Harte at blharte@gmail.com or call 360-606-7272 to register.

Payment is required at the start of class. Make checks payable to the SWWW. If there are less than four registrants, the class may be cancelled. Class starts at 8:30 and concludes at 3:30. Lunch, snacks, blanks and face shields provided.

Bring your own bowl gouges if you have them. Four sets of tools are available for use, please let Brian know when registering if you will need them.

JULY 27 • R. E. VAUGHN WOODTURNING SCHOOL

SOUTHWEST WASHINGTON WOODTURNERS

R.E. Vaughn Woodturning School

1600 WEST 20TH STREET • VANCOUVER, WA 98660

**Saturday, July 27****SPIRAL TOOL USE ON SPINDLES & BOWLS**Lead Instructor: **John Beechwood**

\$100

This one day class focuses on turning a spindle and bowl and then using a spiral cutting tool to create a piece of art. The class covers turning a basic spindle and bowl from blanks, proper tool control for basic cuts and proper use of a spiral tool. Bring your own turning tools if you have them.

Class is limited to 8 participants. Pre-registration required, contact Brian Harte at blharte@gmail.com or call 360-606-7272 to register.

Payment is required at the start of class. Make checks payable to the SWWW. If there are less than four registrants, the class may be cancelled. Class starts at 8:30 and concludes at 3:30. Lunch, snacks, blanks and face shields provided.

Bring your own bowl gouges if you have them. Four sets of tools are available for use, please let Brian know when registering if you will need them.

AUGUST 5-8 • ELI AVISERA IS COMING TO PORTLAND



There are still two openings for [Eli Avisera's](#) hands-on class on August 7-8.

Eli will be teaching two - two day classes Aug 5-6 and 7-8 at [Dale's shop](#) in Gresham. Because of Eli's travel schedule we were limited to these days. The classes will be limited to eight students each. The cost will be \$225 for each two day class.

Eli is one of the best demonstrators and teachers in the world. He travels all over the world teaching woodturning. It has been seven years since we had Eli here in Portland.

Attached are a few pictures of his work and there are many more on the internet. This is a chance to spend two days with one of the top woodturners in the world.

If you are interested in signing up for one of the classes, contact Dale at 503-661-7793 or at woodbowl@frontier.com. If I fill the classes, I will take reserve names. We tend to have a few openings as life interferes, and some members have to drop out at the last minute.

—Dale



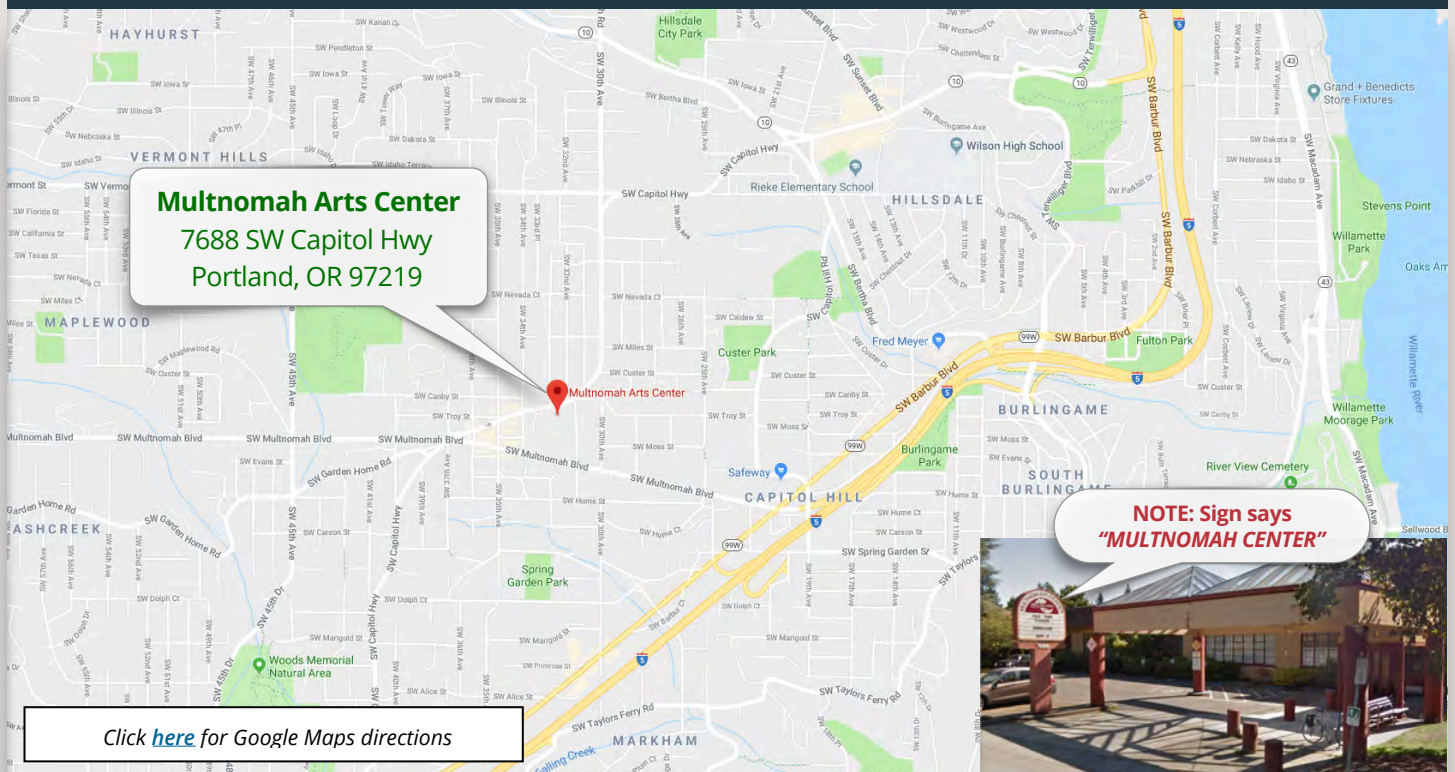
2019 NWWT MEETING SCHEDULE & PROGRAMS

NORTHWEST WOODTURNERS

1st Thursday of each month at 7:00 PM in the Main Auditorium
The Multnomah Arts Center, 7688 SW Capitol Hwy, Portland, OR 97219

2018	PROGRAM	CHALLENGE
Thursday, January 3	Annual Tool Swap Meet	"Rescued" (Repaired) Turnings
Thursday, February 7	Dale Larson – "Picking the Best Part of the Tree"	New-Tool Turnings
Thursday, March 7	Bill Karow – "Bird's Beak Vases"	Naturally Figured Pieces
Thursday, April 4	Rick Rich – "Table Lamp"	Bird's Mouth Bowls
Thursday, May 2	Jay Shepard – "Finishing"	TBD
Thursday, June 6	Reed Gray (aka RoboHippy) – "Bowl Turning"	TBD
Thursday, July 4	No Meeting	None
Saturday, August 3	Picnic and Wood Auction	None
Thursday, September 5	TBD	TBD
Thursday, October 3	TBD	TBD
Thursday, November 7	Elections	Holiday Pieces / Ornaments
December	No Meeting	Happy Holidays!

MAP TO THE MULTNOMAH ARTS CENTER



OTHER WOODTURNING CLUBS • MEETINGS & PROGRAMS

One meeting every month not enough?

Check out what other clubs around our area are doing!
(Please click on the clubs' website links to verify the information presented below.)



WOODTURNERS OF OLYMPIA • Olympia, WA
woodturnersofolympia.org

2nd TUESDAY of every month @ 6:30 PM

**April 9, 2019:
TBD**

First Baptist Church of Olympia
904 Washington St. SE, Olympia, WA 98507 [\[map\]](#)



WILLAMETTE VALLEY WOODTURNERS • Salem, OR
willamettevalleywoodturners.com

2nd THURSDAY of every month @ 6:30 PM

**April 11, 2019:
TBD**

Center 50+ Senior Center
2615 Portland Rd, NE Salem, OR 97303 [\[map\]](#)



CASCADE WOODTURNERS • Portland, OR
cwa49.wildapricot.org

3rd THURSDAY of every month @ 6:30 PM

**April 18, 2019:
Tom Hastings
"Basket Illusion Box"**

Willamette Carpenters Training Center
4222 NE 158th Ave, Portland, OR 97230 [\[map\]](#)



SW WASHINGTON WOODTURNERS • Vancouver, WA
southwestwashingtonwoodturners.com

4th THURSDAY of every month @ 7:00 PM

**April 25, 2019:
Turn a Pen!
"Pen Turning Tips & Tricks"**

Friends of the Carpenter's Center
1600 W 20th St, Vancouver, WA 98660 [\[map\]](#)



BEAVER STATE WOODTURNERS • Eugene, OR
beaverstatewoodturners.com

4th THURSDAY of every month @ 6:00 PM

**April 25, 2019:
TBD**

Coburg Community Charter School
91274 N Coburg Rd, Coburg, OR 97408 [\[map\]](#)

2019 NATIONAL & REGIONAL SYMPOSIA

July 11-14, 2019

[AAW 33rd International Woodturning Symposium](#)

Raleigh, NC

August 23-25, 2019

[28th Annual S.W.A.T. \(Southwest Association of Turners\) Symposium](#)

Waco, TX

September 13-15, 2019

[Rocky Mountain Woodturning Symposium](#)

Loveland, CO

September 20-22, 2019

[Turning Southern Style Symposium](#)

Dalton, GA

October 17-20, 2019

[Turning 2019 at Ohio Valley Woodturners Guild](#)

West Harrison, IN

June 4-7, 2020

[AAW 34th International Woodturning Symposium](#)

Louisville, KY

LOCAL WOODWORKING STORES' FREE DEMOS

Many other fine classes and demonstrations are available from our local stores.

Date	Free Demo	Day	Time	Location
04/06/19	How To Build A Cross Cut Sled	Sat	1-2pm	Woodcraft, Tigard
04/06/19	Sharon & Ramos: Decorative Walking Sticks	Sat	10am-3pm	Woodcrafters, Portland
04/06/19	Shaker Style Cabinet Door Construction	Sat	11am	Rockler, Beaverton
04/13/19	Turn A Baseball Bat	Sat	1-2pm	Woodcraft, Tigard
04/13/19	Larry Haas: Intarsia / Scroll Saw	Sat	10am-3pm	Woodcrafters, Portland
04/13/19	Dovetails Made Easy	Sat	11am	Rockler, Beaverton
04/20/19	Cutting Board	Sat	1-2pm	Woodcraft, Tigard
04/20/19	Fred Kline: Woodturning	Sat	10am-3pm	Woodcrafters, Portland
04/20/19	Finishing with Water Based Dye Stains	Sat	11am	Rockler, Beaverton
04/27/19	Making Shoot Board For End Grain	Sat	1-2pm	Woodcraft, Tigard
04/27/19	Shirley Malar: Pyrography	Sat	10am-3pm	Woodcrafters, Portland
04/27/19	Cabinet Hardware 101	Sat	11am	Rockler, Beaverton
05/04/19	Applying A French Polish	Sat	1-2pm	Woodcraft, Tigard
05/04/19	Kevin Poest: Woodturner and Artist	Sat	10am-3pm	Woodcrafters, Portland
05/04/19	Pen Turning	Sat	11am	Rockler, Beaverton
05/11/19	Hardware - Euro Hinges	Sat	1-2pm	Woodcraft, Tigard
05/11/19	Jim Tharp: Woodcarver	Sat	10am-3pm	Woodcrafters, Portland
05/11/19	Table Saw Safety with MicroJig	Sat	11am	Rockler, Beaverton
05/18/19	CNC Demo	Sat	1-2pm	Woodcraft, Tigard
05/18/19	Skip Burke: Woodturner	Sat	10am-3pm	Woodcrafters, Portland
05/18/19	Spray on Finishes	Sat	11am	Rockler, Beaverton
05/25/19	Kevin Poest: Woodturner and Artist	Sat	10am-3pm	Woodcrafters, Portland
05/25/19	Hand Cut Dovetails	Sat	1-2pm	Woodcraft, Tigard
05/25/19	Dovetails Made Easy	Sat	11am	Rockler, Beaverton

Please visit the store websites to verify the information presented above.



Rockler, Beaverton

(503) 672-7266

rockler.com

Woodcraft, Tigard

(503) 684-1428

woodcraft.com

Woodcrafters, Portland

(503) 231-0226

woodcrafters.us

OUR BUSINESS PARTNERS

Northwest Woodturners encourages our members to visit these business partners to find the many great products they carry and to stock up on the necessary items for your wood turning needs.

Be sure to remind the sales clerk that you are a member of Northwest Woodturners! Our business partners provide NWWT with generous gifts based on member purchases.




Create with Confidence™

10% off non-sale items for club members
(excludes power tools, Leigh and Porter-Cable dovetail jigs, CNC Shark)

11773 SW Beaverton-Hillsdale Hwy, Beaverton, OR 97005
(503)672-7266 store17@rockler.com

Delta, JET, and Powermatic lathes, turning tools, turning stock, turning kits, abrasives, finishes, plus a whole lot more!

WOODCRAFT®
Helping You Make Wood Work®

Hours

Sunday 9am-5pm • Monday 9am-7pm • Tuesday 9am-7pm
Wednesday 9am-7pm • Thursday 9am-9pm • Friday 9am-7pm
Saturday 9am-6pm

Independently Owned
& Operated Franchise
12020 SW Main Street
Tigard, OR 97223

Phone: (503) 684-1428
Toll Free: (866) 684-1428
Fax: (888) 312-9663
woodcraft312@woodcraftportland.com

Here's a suggestion: After you've purchased an item from one of our business partners who gave you a discount because you are a member of NWWT, take a moment and contact them via their website or an e-mail and thank them for supporting NWWT.

BULLETIN BOARD

NWWT Club-member Bob Poetzsch has a good idea:

"What do you think of a "IN SEARCH OF" area in the newsletter? Long time turners are probably sitting on piles of stuff they don't use. Im a newbie and am already going to a few favorites. Anyway, if I could post ISO a "cupped live center or a box scraper" etc, maybe it would benefit both parties.



So...here's our first ISO listing:

Looking for a **small live cupped center MT2** and a **"Crown Spur Drive 5/8" headstock center"**
Contact Bob Poetzsch bluespoet54@yahoo.com



LATHE FOR SALE

It belonged to my son who now lives in Texas. **Jet Mini Lathe JML-1014 with the chuck included.** It has been stored in a dry place, coated with Vaseline to protect and covered. I'll clean and polish as soon as it is listed. It has not been used very much. The manual and two turning books are also included.

If interested, please email me at tsitra.m@gmail.com

–Marilyn Joyce

If you have woodturning tools for sale,
know of a tree being taken down in the near future,
a new source for woodturning stock,
upcoming estate sales,
need help
or have questions that need answering...

[let me know](#) and I will post it on the Bulletin Board section of next month's NWWT newsletter.

EDITOR'S NOTES

Past newsletters can be accessed from the NWWT website [here](#).

If you don't have internet access, provide me with your mailing address, and I will print out a copy, lick a stamp and mail a copy of the newsletter to you via U.S. Postal Service.

If you do not receive a courtesy email from me by the beginning of the month indicating that a new newsletter is available online, please send me your current email address.

Submissions to the newsletter are due by the last Thursday of the month.

Articles, tips, web links, classified ads and other woodturning-related items are welcome! Send them to [me](#).

For other business inquiries, contact Northwest Woodturners at:

Northwest Woodturners
P.O. Box 1157
Lake Oswego, OR 97035

NWWT membership has benefits!

Show your NWWT Membership Card to receive a discount off your purchase at Gilmer Wood, Rockler, Woodcraft, Woodcrafters, North Woods Figured Wood, and Crosscut Hardwoods.

