

Northwest Woodturners



A Chapter of The American Association of Woodturners

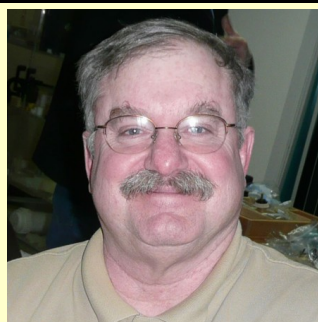
Volume 21, Issue 5

The woodturners' local resource

May 2016

PRESIDENT'S MESSAGE

There are two kinds of motorcyclists: those that have fallen down and those that will fall down. There are two types of woodturners: those that had a piece come off the lathe and those that will have a piece come off the lathe. For my entire career as a wood turner, not an insignificant amount of time, I guess I belonged in the latter group of woodturners. This month I joined the former group. It wasn't a big deal beyond the surprise of something that had never happened before. I've had pieces slip off the drive center but never actually get launched. I was turning a small quilted maple bowl. At the time, I thought perhaps I had made the mortise for the expansion chuck a little shallow. While I was finishing up the interior cuts, off it came.



The moral of the story is that for all these many years I have never worn face shield. In the last month, I had begun to wear a face shield except when doing demonstrations. I think I didn't have any sort of premonition that eventually an event of certainty would occur. Rather, the recent interest in turning safety; the appointment of a safety officer by Cascade Woodturners and the more frequent discussions during club meetings of safety issues compelled me, subconsciously, to put on the face shield I have owned for many years. It was a small bowl. It glanced off the edge the face shield. It probably would've done no harm. But that's not the point, the next one might.

This month we are honored to have Steve Newberry demonstrate for us again. Steve is an exceptional technician with an eye for the unusual. His off-center turnings have always been items of interest not only because of their exceptional beauty but because the technical demands of production. When a piece of wood is going round and round it's hard to make it look not round. This month Steve will be demonstrating the process of producing a ladle. Think a minute about the geometry of a ladle, and the difficulty of such a project becomes apparent. I regret that I won't be there to see the demonstration. I'm very happy about Roger's demonstration DVDs.

I will see you all in June.

— Mike

CLUB INFO

Northwest Woodturners

www.northwestwoodturners.com

Meetings are held at 7:00PM on the 1st Thursday of each month at The Multnomah Arts Center 7688 SW Capitol Hwy, Portland, OR 97219

President

Mike Meredith
mmeredith23@comcast.net
503-522-0531

Vice President

Bill Giffin

Secretary

Jim Schoeffel

Treasurer

Roger Crooks

Directors

Barbara Hall
Richard Hall

Librarians

Denvy Larson &
Lynne Hemmert

Raffle

Tom Willing

Company Store

Mike Porter &
Roger Crooks

Newsletter Editor

Jim Schoeffel
jschoeffel@aol.com
503-591-9066

NWWT Web Site

Barbara Hall

MAY PROGRAM — STEVE NEWBERRY — Turning a Ladle

Club member Steve Newberry will turn a ladle on two centers using a mid-sized fork in a tree limb that most of us would discard. If time allows, he will show how to turn a multi-axis handle.

Steve's been turning bowls, boxes, candle holders, vases, hollow forms, etc. for over 20 years, and has found that multi-axis turnings are a challenge that seems to hold his interest the most.

**TURNIN' N LEARNIN' — CHAPTER 4 by Mike Porter**

Are you a new turner and the cost of tools is conflicting with your budget? Are you having trouble getting budget approval from your HSA Director? HSA...that would be your Homeland Spending Agency. Why not make some tools? Others do it. I reasoned that I could save some money, get some useful tools out of the effort and have a bit of fun with learning. I had watched a number of YouTube videos on making one's own lathe tools, so I decided to give it a try. The site I found most helpful was the Mike Peace YouTube site.

I took on making four tools that didn't appear too daunting with my beginner skills and equipment in my shop. I chose to make two parting tools, thin and normal, a hand held depth drill and to regrind a skew I bought at our January meeting.

Materials: I had some ash blanks I'd bought at Rockler some time back, so they were perfect for turning handles and I'd get some needed skew practice. Ferrules? Some of the YT videos show using copper pipe or pipe fittings. I wanted a ferrule more like a professional tool has. I looked and found them at Rockler in packs of 2 priced at just over \$2 each. Steel? From a tip by Mike Peace on YT, I looked on Amazon and I found what was advertised as HSS, so I bought two flat pieces, one thin, one thick, for the two parting tools. From the postal return address, they came from Hong Kong. For the drill I bought a 5/16" HSS steel bit at my local Ace Hardware for \$8. The skew I bought for \$12 last January at our club sale and is HSS from England made by Power.

Here's the summary of the cost of the tools I have made:

- Thin parting tool: \$7 vs. a retail of \$30-\$40.
- Thicker parting tool: \$12 vs. a retail of up to \$75
- Hand held depth drill: \$10 vs. \$35
- 3/4" wide square end scraper: \$12 vs. about \$60

So the math says I've saved perhaps \$120-150 total. To be fair, I have not included the cost of the 3 ash blanks, or the two-part epoxy (about \$6) to glue the steel into the turned handles, the Dr's Woodshop finish, or my CBN grinder wheels that were used for shaping, but you'll cut me that slack, won't you? Now, the test is to see how these work out in practice. The thicker parting tool is not a diamond shape but I may experiment with grinding it so it doesn't bind in the cut. The scraper I can play with the grind as a normal shear scraper or with a negative rake. Good for learning. As I used to tell my Boy Scouts..." you pass or fail, on the trail".

Good turnin' to ya, and remember my request to send me an e-mail at tmikeporter@gmail.com with your experiences at "Turnin' N Learnin". Let's get some sharing going between us all.

APRIL PROGRAM — TERRY GERROS — Making Twists on the Lathe

Terry Gerros, Vice President of Willamette Valley Woodturners in Salem and Chairman of the 2015 Oregon Woodturning Symposium last year, introduced us to the terminology and showed us how to cut twists, often called spirals, on the lathe, and he made it look easy. There are several types of twists: single twist, double twist, triple twist, ribbon twist, and multi-start and cable twists, which differ in the number of beads (more correctly called bines) that spiral around the length of the piece. The depth of the trough (i.e., hollow) that runs between the bines varies with the number of bines, being more shallow when the number of bines is higher. If the hollow between bines is cut deep enough they will meet. This is called open twist and the center of the piece will be open.



The process begins by creating a grid pattern on the surface of the cylindrical piece. The size of the grid is a function of the diameter and length of the cylinder, and the number of twists one wants. The grid points are then connected in a spiraling fashion along the surface of the piece. The cylindrical piece doesn't need to be a straight sided cylinder, but that is the best shape to learn on. The layout process includes spiraling lines that define

the apex of the bine (i.e., its highest point), the cut line (i.e., the bottom of the hollow between bines) and two width control lines. This collection of lines is called the "Pitch Control Lines".

After layout, it's time to begin cutting the twist(s). This is done by hand using a saw or rasp on the cut line while rotating the piece forward by hand (i.e., the lathe is turned OFF). After a number of strokes, the saw/rasp is positioned a little farther along the cut line and the process is repeated. One should count the number of saw/rasp strokes made in one area, and the same number of strokes should be made in the following areas along the length of the piece to ensure uniform depth. Various power tools can then be used to widen and deepen the cut line, after which rasps are used to smooth out the hollow. The sharp edges of the bine are then removed using a palm plane or rasps. The twist is now ready for sanding. Final step in the process is to turn a cove, or your preferred profile, at both ends of the twist(s).



An excellent reference book is *Techniques of Spiral Work* by Stuart Mortimer, which we have in the NWWT Library.



WORK BY TERRY GERROS



Goblets

Triple twist (left)

2-1/2" dia. x 2-3/4" deep x 15-1/2" tall

Double twist (right)

2-3/8" dia. x 3-1/4" deep x 16" tall



Wreath, 6" dia



Pencil Holder

2-3/8" dia. x 4-1/2" tall

& Pencils

1/4" dia. x 7-1/2" long



Hollow Form with
Captive Ring & Finial
2-1/2" dia. x 2-3/4" high
+ 3-1/2" Finial



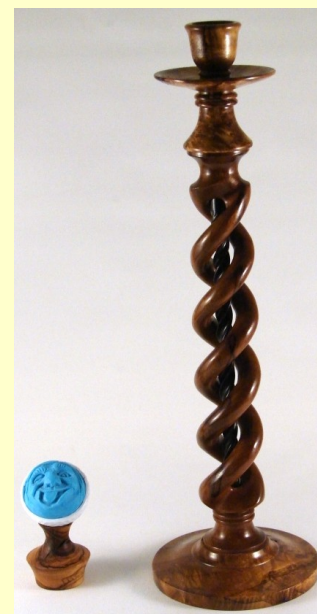
Pepper Mill
2-1/2" dia. x 10" tall



Pepper Mills

2-3/4" dia. x 8-3/4" high

2-3/4" dia. x 7-3/4" high



Candle Holder

1-5/8" dia. x 13-1/2" tall

4-1/4" dia. Base



Hollow Forms

2-1/4" dia. x 2-1/2" high

2" dia. x 1-3/4" high



Wand

1" dia. x 10" long



Hollow Form Vase

3-1/2" dia. x 5-1/4" high

LIBRARY NEWS

Return Checked Out Items: If you have checked items out, **PLEASE** bring them back so that others can read the books or watch the DVDs. Thanks.

— Lynne Hemmert, Librarian

News: There is so much to say about our magnificent library, it is difficult to contain it all in each monthly newsletter. So it is important, just as in "turning", to get down to the nifty gritty details. This month I will focus on zig-zag of a bowl, where there is a center feature built into the bowl around the mid section. Wow, what does that mean? I think it has all to do with segmenting. With that said, you can clearly understand why we have a library, where you can find better information about all aspects of turning wood, not just segmentation, but bowl turning, pen turning, artistic articulation with detailed instructions and most of the time with pictures. Speaking of pictures, the DVD's offer very fine examples of how to turn the easy (learn to turn) to the skillful aspects of production turning.

— Denvy Larson, Librarian

SPECIAL SALES

Wally Dickerman's Oneway 2016 Lathe Sale

As you know, Wally Dickerman, a member of Cascade Woodturners, passed away March 23. The family has asked Dale Larson to sell his lathe, wood and equipment. There will be a sale of the tools and wood towards the end of June. It will be your chance to have something of Wally's. In the mean time Wally's lathe is being offered for sale. It is a Oneway 2016 lathe manufactured in 2007. Serial number 2485, and looks brand new – Wally clearly took good care of it. It includes the following:

- 1-1/2hp motor
- Tailstock swinger attachment
- Adjustable legs
- Two banjos
- 17" outboard bed
- Two mounted lights
- Remote control

The retail value of the lathe is about \$6800. The family is asking **\$5500**. The lathe is in SE Portland so whoever buys it will save the costs of having it shipped from Canada.

Also for sale is a **1/2hp Jet DC500 two bag dust collector** with free stand and port. Asking price is **\$200**.

If you are interested please contact Dale Larson at 503-661-7793 or woodbowl@frontier.com.

Bill Wood Estate Sale - May 14, 2016 at 9:00 am

Bill Wood was an avid turner and member of NWWT until he passed away in 2013. Many of us knew him well. Bill had a meticulous shop with all the dream tools. His estate is now up for sale and will include most everything he owned. Several higher end power tools, many hand tools, and a good supply of lumber are for sale.

His unique one-of-a-kind 60" lathe is also for sale along with his chucks and gouges – see details at <https://sites.google.com/site/60bedlatheforsale/>.

His address is 18101 S Charlie Ct. , Oregon City. It is a couple of blocks off Redlands Rd. The Guild of Oregon Woodworkers is hosting this estate sale so look for signs, and watch for parking assistants.

Dave Stere Lumber Sale – Saturday, May 21, 2016 at 10:00 am

Dave Stere passed away last August and his wife, Bonnie, is selling off his vast collection (hundreds & hundreds of board feet) of milled boards and rough-sawn slabs (2"-3" thick). All are dry. Species include maple, ash, elm, dogwood, Russian olive, apricot, cherry, black walnut, oak, cedar, Douglas fir, pine, red alder, apple, madrone, Pacific yew, and more. Location is 19034 Old Mehama Rd. SE, Stayton, Oregon 97383. Phone 503-769-6508.

APRIL CHALLENGE — EGGS

Editor's Note: The Happy Gnome (courtesy of Bruce Jackson) is included in the pictures to give a sense of size. His head (a golf ball) is about 1.7" (43 mm) in diameter and he is about 3.2" (81 mm) tall.

Challenge Winner: Phil Lapp

Egg with Bacon,
Hash Browns and Toast
10" dia. plate



Skip Burke
Egg in Bowl
6" dia. x 2-1/2" high bowl

**Bill Giffin**

Egg Plant, Ironwood
3-1/2" dia. x 4-1/4" high

**Johnny Barnes**

Bowl of Eggs
12-1/2" dia. x 4" high bowl



Pierced Egg, Calcium Carbonate
1-3/4" dia. x 2-3/4" high



Kaleidoscope, Black Walnut
1-3/4" dia. x 2-1/2" high



APRIL SHOW-n-TELL

Editor's Note: The Happy Gnome (courtesy of Bruce Jackson) is included in the pictures to give a sense of size. His head (a golf ball) is about 1.7" (43 mm) in diameter and he is about 3.2" (81 mm) tall.

Miguel Hernandez

Alder Hollow Form with
Golden Chain Finial
4-1/2" dia. x 6" tall + 6" finial



Ash Hollow Form with Finial
5" dia. x 9-3/4" tall + 5-1/2" finial

**Jim Schoeffel**

Pepper Mill, 10" tall x 2-7/8" dia.
Salt Mill, 8" tall x 2-1/2" dia.
Marblewood

**Phil Lapp**

Natural Edge Bowl, Hazelnut
9" x 5-1/2" x 4-1/4" high

**Roy Ackley**

Pepper Mill, Cocobolo
4-1/4" tall x 2-1/4" dia.



APRIL SHOW-n-TELL (CONTINUED)**Bill Karow**

Wood for all 5 pieces obtained within 2-block radius of my NW Portland home.



Maple
9" dia. x 3-1/2" high



Deodar Cedar
10" dia. x 4-3/4" high



Maple
9-1/2" dia. x 3" high



Natural Edge Walnut
7" dia. x 6-1/2" high



Natural Edge Cherry
10-3/4" x 8-1/4" x 3" high

Bill Giffin

Needle Box with Inset Bead,
Ironwood
2" dia. x 3-1/2" tall



Vase, Maple Burl
2-3/4" dia. x 8-1/4" tall



Hollow Form, Maple Burl
5-1/2" dia. x 3" high
+ 2-1/2" Finial



Wall Hanging, Maple Burl
9" x 11"



NORTHWEST WOODTURNERS MEETING SCHEDULE AND PROGRAMS

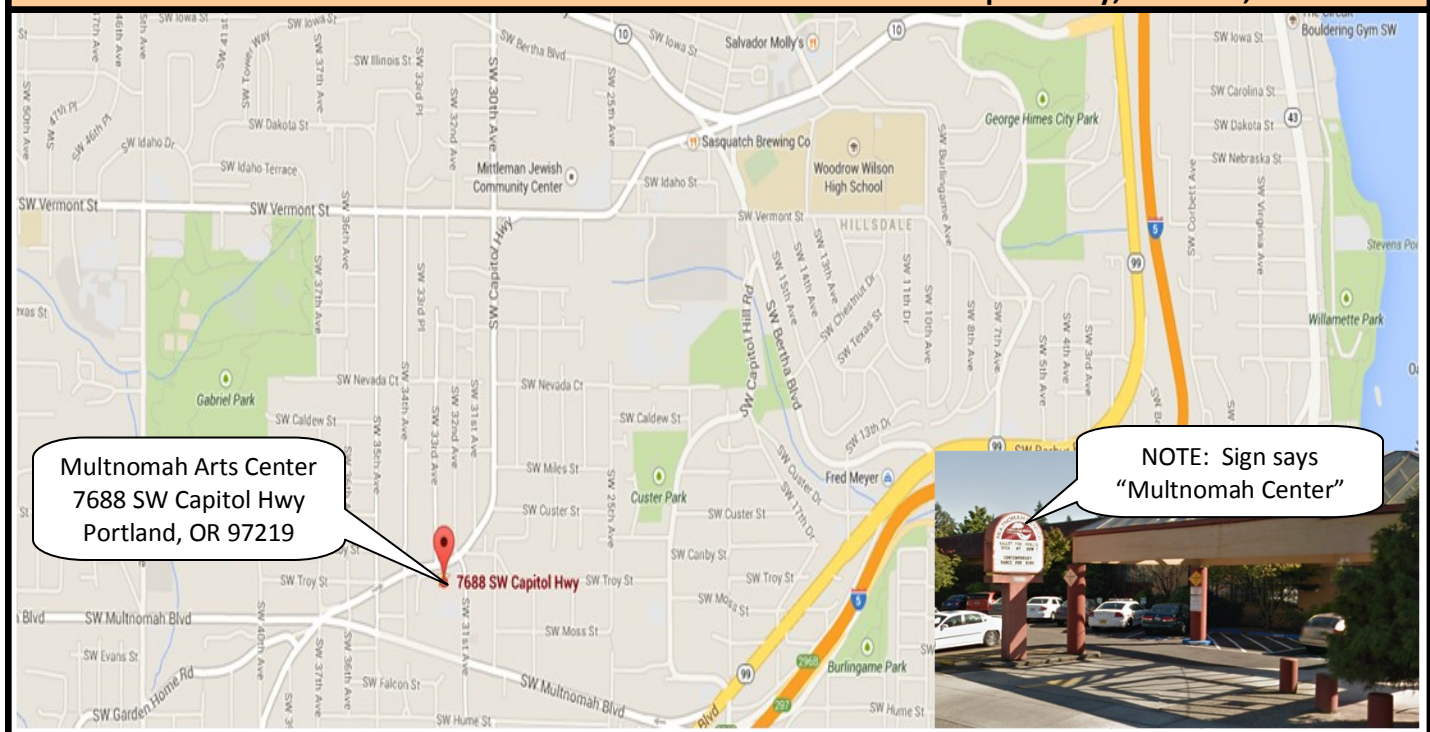
1st Thursday at 7:00 PM

The Multnomah Arts Center, 7688 SW Capitol Hwy, Portland, OR 97219

2016	Program	Challenge
Thursday, January 7	Annual Tool Swap Meet	none
Thursday, February 4	Dale Larson (From Tree to Bowl)	(postponed to March)
Thursday, March 3	Station demo night	Segmented Pieces and Multi-Axis Pieces
Thursday, April 7	Terry Gerros (Spirals)	Eggs
Thursday, May 5	Steve Newberry (Ladles)	Two-of-a-Kind (Matching Pieces)
Thursday, June 2	Phil Lapp (Hollowing Systems & Trent Bosch Visualizer System)	Hollow Forms
Thursday, July 7	Carl Jacobson (Boxes)	Reassembled Bowls
Saturday, August 6	Annual Auction and Picnic	none
Thursday, September 1	Tom Hasting (Natural Edge Bowls)	Winged Bowls
Thursday, October 6	Reed Gray (Three Skills for Turning)	Carved or Textured Pieces
Thursday, November 3	Elections (No Show-n-Tell)	None (Elections)
Thursday, December 1	No Meeting	Happy Holidays

MAP TO THE MULTNOMAH ARTS CENTER

7688 SW Capitol Hwy, Portland, OR 97219



Other Woodturner Clubs 2016 Meetings and Programs

Please visit the individual club websites to verify the information presented below.

Cascade Woodturners (Portland, OR) (www.cascadewoodturners.com)

3rd Thursday, 6:45 PM at the Willamette Carpenters Training Center,
4222 NE 158th Ave., Portland, OR 97230

May 19: Phil Lapp (Winged Bowl from a Crotch)

June 30: Steve Newberry **[NOTE SPECIAL DATE]**

Willamette Valley Woodturners (Salem, OR) (www.willamettevalleywoodturners.com)

2nd Thursday, 6:30 PM at the Salem Center 50+, 2615 Portland Rd, NE Salem, OR 97303

May 12: Lloyd Johnson (Segmented work)

June 9: Phil Lapp

Beaver State Woodturners (Eugene, OR) (www.beaverstatewoodturners.com)

4th Thursday, 6:00 PM at the Woodcraft Store, 1052 Green Acres Rd, Eugene, OR 97408

April 28: Rudi Rudolph (Chucking Methods)

May 26: TBA

Southwest Washington Woodturners (Vancouver, WA) (www.southwestwashingtonwoodturners.com)

4th Wednesday, 7:00 PM at The Friends of the Carpenter's Center, 1600 West 20th St, Vancouver, WA

April 27: Kathleen Duncan (Thin-walled Turning and Piercing)

May 25: TBA

Woodturners of Olympia (Olympia, WA) (www.woodturnersofolympia.org)

4th Thursday, 6:30 PM at the Thurston County Fairgrounds, Carpenter Road SE, Lacey, WA

April 28: Bob Epsen (Box with a Twist!)

May 26: TBA

2016 NATIONAL SYMPOSIA

Desert Woodturning Roundup *presented by Arizona Woodturners Association*

February 26-28, 2016

Mesa, AZ

Idaho Artistry in Wood Show *at Southwest Idaho Woodturners Association*

February 27-28, 2016

Boise, ID

Honolulu Woodturners 7th Annual Symposium

March 12-13, 2016

Honolulu, HI

Totally Turning 2016

April 2-3, 2016

Saratoga Springs, NY

Dakota Woodturners Spring Symposium *at Dakota Woodturners*

April 22-24, 2016

Bismarck, ND

37th Annual Utah Woodturning Symposium

May 12-14, 2016

Orem, UT

AAW 30th International Symposium

June 9-12, 2015

Atlanta, GA

Turn-On! Chicago 2016

July 22-24, 2016

Mundelein, IL

Saskatchewan Woodturning Symposium 2016

July 22-24, 2016

Regina, SK

2016 Symposium and Workshops featuring Michael Hosaluk and regional woodturner Bob Espen

presented by Woodturners of Olympia

July 23-27, 2016

Olympia High School, 1302 North Street, Olympia, WA 98501 (Note new location)

Symposium, Saturday, July 23, 2016, 7:50-5:00, Registration \$100 prior to June 1, \$120 after June 1

Workshops on July 24-27, 2016

Sunday, July 24, 2016: Basics of spindle work and making functional items. Cost \$150

Monday, July 25, 2016: Unique techniques for making and enhancing boxes and containers. Cost \$150

Tuesday & Wednesday, July 26 & 27, 2016: How to improve your work: tool use, surface enhancement, embellishment techniques. Cost \$250

For more information visit: <http://www.woodturnersofolympia.org/symposium-2016.html>

SWATurners 25th Anniversary Symposium

August 26-28, 2016

Waco, TX

Mid-Atlantic Woodturners Association

September 24-25

Lancaster, PA

5th Segmenting Symposium

October 27-30, 2016

Quincy, MA

Virginia Woodturners (10 Clubs)

November 5-6, 2016

Fishersville, VA



**AAW's 30th Annual Int'l Symposium in Atlanta, Georgia
June 9-12, 2016**

Atlanta Convention Center at AmericasMart

<http://www.woodturner.org/?page=2016Atlanta>

**WOODTURNERS
of OLYMPIA**

**2016 Symposium
& Workshops**

Featuring internationally recognized woodturner

MICHAEL HOSALUK

ARTIST / MAKER / EDUCATOR
michaelhosaluk.com



See Michael's profile for
AAW 30 Year Anniversary

**A Look
Back**

[http://www.woodturner.org/
default.asp?page=30YearHosaluk](http://www.woodturner.org/default.asp?page=30YearHosaluk)



Symposium, July 23

New Location! **Olympia High School**

Workshops, July 24 - 27

with regional woodturner

Bob Espen



Sponsors

D-Way Tools, Craft Supplies, Paokard
Woodworks, North Woods Figured Woods,
Sumner Woodworker Store, Rookler (Tukwila),
Reed's Woodworking LLC (robhippy)

More Details

<http://www.woodturnersofolympia.org/>

Register by Check

<http://www.woodturnersofolympia.org/>

Register Now On-line

<https://aaw.site-ym.com/?2016Olympia>

**Joining the AAW when you register on-line
will benefit the Woodturners of Olympia.**

George Macauley, Symposium Contact
call 360.918.2304

2016 LOCAL EVENTS**Oregon City Festival of the Arts**

A Celebration of Visual & Performing Arts

August 13-14, 2016

End of the Oregon Trail Interpretive & Visitor Information Center, 1726 Washington Street, Oregon City, OR 97045

Art, food, live music, children's hands-on art, Willamette Falls Symphony

Sponsored by Three Rivers Artist Guild, www.threeriversartistguild.com

Frogwood 2016

hosted by The Pacific Northwest Woodturning Guild

August 15-21, 2016, Gresham, Oregon

The Pacific Northwest Woodturning Guild is hosting its 9th annual four-day collaborative event to explore the fusion of woodturning, metalworking, textiles, and other art mediums.

For more information visit: www.frogwood.us

Frogwood 2016 Annual Auction

August 20, 2016 at 4:00PM

Mount Hood Community College, Visual Arts Gallery, 26000 SE Stark Street, Gresham, Oregon 97030

Featuring work by participants in Frogwood 2016, An Artist's Collaborative, www.frogwood.us

Light refreshments served. Credit cards accepted.

Sponsored by the Pacific Northwest Woodturning Guild, www.woodturningguild.com

19th Annual Art in the Pearl

September 3-5, 2016

North Parks Blocks, Portland, Oregon

LOCAL WOODWORKING STORE MAY 2016 FREE DEMOS

Date	Demo	Location	Time
05/07	Master the Mini Lathe	Rockler, Beaverton	11:00 AM
05/07	Router Basics	Woodcraft, Tigard	1:00 PM – 2:00 PM
05/07	Wildlife Woodcuts by Debby Neely	Woodcrafters, Portland	10:00 AM – 3:00 PM
05/14	Bench Cookie Extravaganza	Rockler, Beaverton	11:00 AM
05/14	Dust Collection	Woodcraft, Tigard	1:00 PM – 2:00 PM
05/14	Wood Burning and Wood Sculpture by Mercedes McCreight	Woodcrafters, Portland	10:00 AM – 3:00 PM
05/21	Knife Making Made Simple	Rockler, Beaverton	11:00 AM
05/21	Pen Turning	Woodcraft, Tigard	1:00 PM – 2:00 PM
05/21	Woodturning by Fred Kline	Woodcrafters, Portland	10:00 AM – 3:00 PM
05/28	Routing Radiused Corners	Rockler, Beaverton	11:00 AM
05/28	Bandsaw Resawing	Woodcraft, Tigard	1:00 PM – 2:00 PM
05/28	Scrollsawing and Handcarved Celtic Designs by Rusty Brown	Woodcrafters, Portland	10:00 AM – 3:00 PM

Many other fine classes and demos are available from these local stores:

Rockler, Beaverton, 503-672-7266, <http://www.rockler.com/retail/stores/or/portland-store>

Woodcraft, Tigard, 503-684-1428, <http://www.woodcraft.com/stores/store.aspx?id=312>

Woodcrafters, Portland, 503-231-0226, <http://www.woodcrafters.us/>

Rockler Swap Meet Saturday, May 21, 2016 from 9:00AM to 2:00PM

Rockler Woodworking and Hardware in Beaverton (11773 SW Beaverton Hillsdale Hwy, Beaverton, OR 97005) will be hosting a one-day swap meet on Saturday, May 21, 2016 from 9:00AM to 2:00PM and all are invited to participate. The event will allow people to buy and sell used tools and supplies, and to mingle and enjoy the camaraderie of other woodworking enthusiasts. There is no cost to participate.

Please contact the store at 503-672-7266 for more details.

THANK OUR BUSINESS PARTNERS

Here's a suggestion: When you get home from purchasing a treasured item from one of our business partners who gave you a discount because you are a member of NWWT, take a moment and contact them via their web site or an e-mail and thank them for supporting NWWT.

FOR SALE BULLETIN BOARD

FREE Bowl Kiln made from a stand up freezer. It works very well, but is no longer needed. It will take freshly roughed out green bowls to dry and ready to finish turn in about 2 weeks.

Contact Jim McAllister at 503 757 0997

For Sale: Ernie Conover lathe: 20 years old but in great shape.

If interested, contact Brian at skinner8688@comcast.net.

For Sale

DELTA 46-715
14-Inch Woodworking Lathe
 3/4-Horsepower • 110-120-Volt • Variable Speed



\$700 **Cash**
 Or Best Offer

Heavy Duty 14" Wood Lathe.
 Brand: Delta.
 Model: 46-715.

This lathe was bought new but has never been used.

It is a big capacity lathe designed for industry, commercial shops and schools (but home handymen would love it too!) Cast iron bed.

The owner's manual and a set of new lathe tools are included.

- Delta 3/4-horsepower lathe includes 10 speeds to suit your projects
- Head stock rotates at 45, 90, and 180 degree angles
- 24-position index on pulley allows you to create ornamental detailing
- Includes a cast-iron tool rest measuring 12 inches, a convenient on/off switch positioned above the motor, and a durable steel stand
- Measures 62.6" by 22.4" by 18.4"; weighs 338 pounds

Pick up is in Banks area. Cash on pick-up is fine.

Please email and include your mobile phone number, and an indication of when you could pick this up. If you are reading this ad, then the item is still available.

Contact:

Email: windfalldesigns@comcast.net

Phone: 503-704-6976



OUR BUSINESS PARTNERS

We encourage our Northwest Woodturners members to visit these business partners to find the many great products they carry and to stock up on the necessary items for your wood turning needs.


Be sure to remind the sales clerk that you are a member of Northwest Woodturners! Our business partners provide NWWT with generous gifts based on member purchases.




Burl • Turning blanks
Slabs • Lumber

15% Off
online orders
—use—
WOODTURNERS
coupon code at checkout

www.nwfiguredwoods.com
(800) 556-3106



Doctor's
Woodshop LLC

Woodturning Finishes
doctorswoodshop.com

WOODCRAFT®

Helping You Make Wood Work®

Hours

Sunday 9am-5pm • Monday 9am-7pm • Tuesday 9am-7pm
Wednesday 9am-7pm • Thursday 9am-9pm • Friday 9am-7pm
Saturday 9am-6pm

Independently Owned
& Operated Franchise
12020 SW Main Street
Tigard, OR 97223

Phone: (503) 684-1428
Toll Free: (866) 684-1428
Fax: (888) 312-9663
woodcraft312@woodcraftportland.com



Create with Confidence™

10% off non-sale items for club members
(excludes power tools, Leigh and Porter-Cable dovetail jigs, CNC Shark)

11773 SW Beaverton-Hillsdale Hwy, Beaverton, OR 97005
(503)672-7266 store17@rockler.com

Delta, JET, and Powermatic lathes, turning tools, turning stock,
turning kits, abrasives, finishes, plus a whole lot more!

EDITOR'S NOTES

All Newsletters can be accessed from the NWWT website www.northwestwoodturners.com. If you do not have internet access, provide me with your mailing address and newsletters will be sent via USPS.

If you do not receive a courtesy email from me by the beginning of the month indicating that a new newsletter is available on line, please send me your current email address.

Submissions to the newsletter are due by the last Thursday of the month. Articles, tips, web links, classified ads, or other woodturning-related items are welcome.

Jim Schoeffel
503-591-9066
jschoeffel@aol.com

For other business inquiries contact Northwest Woodturners at:
Northwest Woodturners, P.O Box 1157, Lake Oswego, OR 97035

Membership has benefits! Show your NWWT Membership Card to receive a discount off your purchase at Gilmer Wood, Rockler, Woodcraft, Woodcrafters, North Woods, and Crosscut Hardwoods.



Northwest
Woodturners
P.O. Box 1157
Lake Oswego OR 97035